



MOVING HEADS & SCANNERS

Intimidator Hybrid 140SR	5
Intimidator Beam 140SR	5
Intimidator Spot 375Z IRC	6
Intimidator Spot 355 IRC	6
Intimidator Beam LED 350	7
Intimidator Trio	7
Intimidator Spot 255 IRC	8
Intimidator Spot 155	8
Intimidator Barrel 305 IRC	9
Intimidator Scan 305 IRC	9



BATTERY & WIRELESS

Freedom Stick Pack	10
Freedom Par Tri-6	11
Freedom Par Hex-4	11
Freedom Par Quad-4 IP	11



EXTERIOR

COLORband PiX IP	13
Freedom Par Quad-4 IP	13
Festoon	28



WASHLIGHTS

COREpar 80 USB	14
COREpar 40 USB	14
COREpar UV USB	15
COLORband PiX USB	15
SlimPAR Pro H USB	16
SlimPAR Pro Q USB	16
SlimPAR Pro W USB	16
COLORband PiX-M USB	17
SlimBANK T18 USB	18
SlimPAR H6 USB	18
EZpar T6 USB	18
SlimPAR 64 RGBA	19
SlimPAR 56	19
SlimPAR T6 USB	20
SlimPAR T12 USB	20
SlimPAR Q6 USB	21
SlimPAR Q12 USB	21
EVE TF-20	23
EVE F-50Z	23



GOBO PROJECTORS

EVE E-50Z	22
EVE E-100Z	22
Gobo Zoom USB	29



SPOTLIGHTS

EVE E-50Z	22
EVE E-100Z	22
LED Followspot 120ST	24
LED Pinspot 3	24
LED Pinspot 2	24



EFFECTS

Mini Kinta IRC	25
Kinta FX	25
GigBAR 2	26
4BAR LT USB	27
4PLAY	27
MotionOrb	28
Festoon	28
MotionDrape LED	28
Abyss USB	29
FXarray Q5	30
FXpar 3	30
FXpar 9	30

Helicopter Q6	31
Swarm Wash FX	32
Swarm 4 FX	32
Swarm 5 FX	32
Rotosphere Q3	33
DJ Bank	33
BOB LED	33



BLACKLIGHTS

COREpar UV USB	35
LED Shadow	35



ATMOSPHERICS

Nimbus	37
Geyser P6	37
Funfetti Shot	38
Hurricane 700	38
Hurricane 901	38
Hurricane 1000	39
Hurricane 1600	39
Hurricane 1200	39
Hurricane Haze 4D	39
Hurricane 1400	39
Hurricane Haze 1DX	39
Bubble King	40
Bubble Machine	40
Atmospheric Remotes	41
Atmospheric Fluids	41



CONTROLLERS

Xpress 512	42
Xpress 512 Plus	42
ShowXpress	42
Xpress 100	42
FlareCON	43
FlareCON Air	43
D-Fi USB	44
D-Fi Hub	46
IRC-6	46
DMX-AN	46
DMX-RT	46
Stage Designer 50	46
Obey 70	47
Obey 10	47
Obey 4	47
Obey 40	47
Obey 6	47
Obey 3	47
DMX-4	48
Data Stream 4	48



ACCESSORIES

Portable Stands	48
Cables	48
CHAUVET DJ VIP Gear Bags	49
VIP Gear Bag CHS-BPK	49
VIP Gear Bag CHS-30	49
VIP Gear Bag CHS-40	49
VIP Gear Bag CHS-X5X	49
VIP Gear Bag CHS-FR4	49
VIP Gear Bag CHS-60	49
Clamps	50
TRUSST Clamps	50

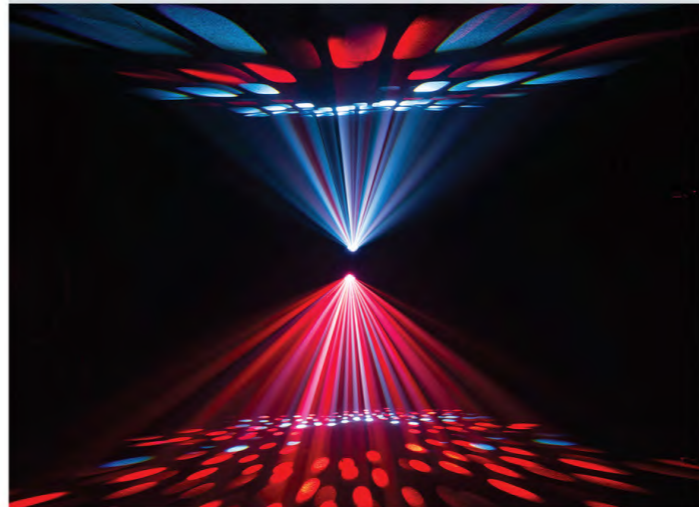
INTIMIDATOR SERIES



MOVING LIGHTS MOVING PEOPLE



Intimidator Hybrid 140SR
 Intimidator Hybrid 140SR is a true hybrid moving head that is an all-in-one light fixture that morphs from SPOT to BEAM to WASH effortlessly. It is fitted with an intense 140 W discharge light engine. Create dynamic beam effects with dual overlapping independently controlled prisms. Dual gobo wheels allow for gobo morphing and amazing mid-air projections and the motorized zoom works in beam, spot and wash modes for ultimate light control. The glass optics of Intimidator Hybrid 140SR ensures crisp beams and gobos. Its motorized focus emits crisp projections at almost any distance. Control of the Intimidator Hybrid 140SR is easy with the full-color display with IRC-6 compatibility, totem mode and onboard memory for storing a scene. There is even a flexible menu option that accepts Osram 132 W lamps if needed. Uses powerCON®-compatible power input/output connections for power linking.



- DMX Channels: 13 or 19
- Light Source (included): Osram Sirius HRI 140 W discharge lamp, 6,000 hours
- Light Source (optional): Osram Sirius HRI 132 W discharge lamp, 6,000 hours
- Zoom Angle Motorized (beam): 3° to 11° (spot): 7° to 21° (wash): 14° to 28°
- Gobo wheel (1): 9 + open, rotating, interchangeable, slot-n-lock, continuous scroll at variable speeds
- Gobo wheel (2): 17 + open, metal, continuous scroll at variable speeds
- Colors: 12 + white, split colors, continuous scroll at variable speeds
- Illuminance (3° beam): 382,000 lux @ 5 m
- Illuminance (7° spot): 104,700 lux @ 5 m
- Illuminance (14° wash): 4,680 lux @ 5 m
- Input Voltage: 100 to 240 VAC, 50/60 Hz (auto-ranging)
- Weight: 15.2 kg
- Size: 322 x 220 x 513 mm

For complete specifications, visit ChauvetDJ.eu

Gobo Wheel 1

Gobo Wheel 2

Colors



Intimidator Beam 140SR
 Intimidator Beam 140SR is a cutting-edge moving head beam fitted with an intense 140 W discharge light engine. Its motorized frost filter converts the tight beam to a wide wash for different applications. An impressive 16-facet prism splits the beam and intensifies the excitement. Built-in totem mode keeps the light on and over the dance floor and non-DMX control is available with the optional IRC-6 wireless remote. On-board power linking saves time running extension cords. powerCON®-compatible power input/output connections for power linking. Uses powerCON®-compatible power input/output connections for power linking.



- DMX Channels: 9 or 15
- Light Source (included): Osram Sirius HRI 140W discharge lamp, 6,000 hours
- Light Source (optional): Osram Sirius HRI 132W discharge lamp, 6,000 hours
- Beam Angle (beam): 3°
- Beam Angle (frost): 21°
- Gobos: 17 + open (all Aluminum), Fixed, continuous scroll at variable speeds
- Colors: 14 + white, split colors, continuous scroll at variable speeds
- Illuminance: 382,000 lux @ 5 m
- Illuminance: 37,900 lux @ 15 m
- Input Voltage: 100 to 240 VAC, 50/60 Hz (auto-ranging)
- Weight: 11.7 kg
- Size: 322 x 220 x 420 mm

For complete specifications, visit ChauvetDJ.eu

Gobos

Colors



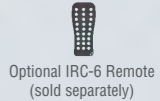
Intimidator Spot 375Z IRC

Intimidator Spot 375Z IRC is an exceptionally bright, 150 W LED moving head spot designed for large events. It features motorized zoom for short or long-throw applications. Dual rotating prisms split the beam for great effects and to cover a larger area. The motorized focus ensures crisp projections at almost any distance and the built-in Totem mode keeps the beams exactly where you want them. Intimidator Spot 375Z IRC includes built-in, automated and sound-activated programs or it can be controlled in DMX or Master/Slave mode. PowerCON-compatible power input/output connections for power linking are also onboard.



- DMX Channels: 9 or 15
- Light Source: 1 LED (white) 150 W, (12.3 A), 50,000 hours
- Zoom Angle (motorized): 10° to 23°
- Gobos: 7 + open (6 aluminum + 1 glass), rotating, interchangeable, indexing, slot-n-lock, continuous scroll at variable speeds
- Gobo Size: 24 mm outside, 20 mm image, 1 mm max thickness
- Colors: 7 + white, split colors, continuous scroll at variable speeds
- Illuminance (10°): 38,000 lux @ 2 m
- Illuminance (23°): 19,850 lux @ 2 m
- Input Voltage: 100 to 240 VAC, 50/60 Hz (auto-ranging)
- Weight: 12.4 kg
- Size: 220 x 322 x 466 mm

For complete specifications, visit ChauvetDJ.eu



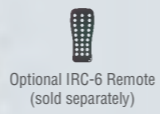
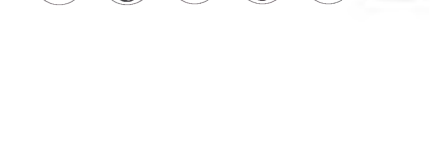
Intimidator Trio

Intimidator Trio is an innovative, LED-powered moving head that works brilliantly as a beam, wash and effect fixture. The fixture's motorized zoom allows seamless changes, from a narrow beam to a wide wash. Its continuously rotating honeycomb delivers the excitement of an effect light. Built-in auto programs with zone control make it easy to create complex looks. For even more elaborate looks, master/slave programs can be coordinated for up to 4 fixtures with no programming. A built-in Totem mode allows the beams to remain focused on the dance floor. Set, save, and recall one scene directly from the full-color LCD display. Wireless (non-DMX) control is easy using the optional IRC-6 remote. Multiple units can be power linked to save time running cables and extension cords. Fits best in the CHS-50 VIP Gear Bag.



- DMX Channels: 15 or 30
- Light Source: 6 LEDs (quad-color RGBW) 21 W (6.3 A), 50,000 hours
- Zoom Angle (motorized): 7° to 53°
- Illuminance (7°): 16,000 lux @ 2m
- Illuminance (53°): 1,350 lux @ 2 m
- Input Voltage: 100 to 240 VAC, 50/60 Hz (auto-ranging)
- Weight: 9.2 kg
- Size: 278 x 278 x 386 mm

For complete specifications, visit ChauvetDJ.eu



Intimidator Spot 355 IRC

Intimidator Spot 355 IRC is a feature-packed moving head spot fitted with a 90 W LED. The rotating 3-facet prism can split the beam to expand the coverage area while the manual zoom can increase the throw distance. Other features include an easy-access gobo door that makes it simple to change gobos for customized looks and a Totem mode that keeps beams focused on the dance floor. Up to 4 fixtures can be linked to create eye-catching, synchronized shows in automated or sound mode. Set, save, and recall one scene directly from the full-color LCD display. Travels safely in the optional flight case Road Case S35X or CHS-50 VIP Gear Bag.



- DMX Channels: 8 or 14
- Light Source: 1 LED (white) 90 W (24.2 A), 50,000 hours
- Zoom Angle (manual): 12° to 17°
- Colors: 8 + white, split colors, continuous scroll at variable speeds
- Gobos: 7 + open (5 metal + 2 glass), rotating, interchangeable, continuous scroll at variable speeds
- Gobo Size: 24 mm outside, 20 mm image, 1.1 mm max thickness
- Illuminance (12°): 21,810 lux @ 2 m
- Illuminance (17°): 9,400 lux @ 2 m
- Input Voltage: 100 to 240 VAC, 50/60 Hz (auto-ranging)
- Weight: 11.2 kg
- Size: 268 x 340 x 392 mm

For complete specifications, visit ChauvetDJ.eu



Intimidator Beam LED 350

Intimidator Beam LED 350 projects a tight 4-degree beam for crisp aerial effects. Complete with an 8-color wheel, a 5-slot fixed gobo wheel with an animation effect and a 3-facet prism, it cuts through haze with lightning-fast speed, creating a brilliant shaft of light and defined aerial effects. It is a multipurpose moving head that converts to a powerful washlight by utilizing the built-in automated frost filter. Travels safely in the optional Road Case S35X or CHS-50 VIP Gear Bag.



- DMX Channels: 8 or 14
- Light Source: 1 LED (white) 75 W (17 A), 50,000 hours
- Beam Angle: 4°
- Gobos: 5 + open, animation effect, continuous scroll at variable speeds
- Colors: 8 + white, split colors, continuous scroll at variable speeds
- Illuminance: 139,200 lux @ 2 m
- Input Voltage: 100 to 240 VAC, 50/60 Hz (auto-ranging)
- Weight: 9.8 kg
- Size: 11.3 x 13.4 x 18.5 in (287 x 340 x 470 mm)

For complete specifications, visit ChauvetDJ.eu





Available in black or white

Optional IRC-6 Remote and CHS-X5X VIP Gear Bag (sold separately)

Intimidator Spot 255 IRC

Intimidator Spot 255 IRC is a feature-rich moving head spot fitted with a 60 W LED. This power-packed fixture enhances any event by generating a synchronized light show in master/slave mode with built-in automated programs. Other features include built-in effect macros and move-in-black capabilities, selectable pan and tilt ranges, electronic dimmer, a 3-facet prism, an easy-access gobo door for quick gobo changes, and sound-activated programs. Control it wirelessly with the optional IRC-6 remote. Intimidator Spot 255 IRC fits best in the CHS-X5X VIP Gear Bag.



- DMX Channels: 8 or 13
- Light Source: 1 LED (white) 60 W (2.3 A), 50,000 hours
- Beam Angle: 15°
- Gobos: 7 + open, rotating, interchangeable, slot-n-lock, continuous scroll at variable speeds
- Gobo Size: 24 mm outside, 20 mm image, 1.1 mm max thickness
- Colors: 8 + white, split colors, continuous scroll at variable speeds
- Illuminance: 10,420 lux @ 2 m
- Input Voltage: 100 to 240 VAC, 50/60 Hz (auto-ranging)
- Weight: 5.7 kg
- Size: 211 x 232 x 337 mm

For complete specifications, visit ChauvetDJ.eu



Gobos



Colors



CHS-X5X VIP Gear Bag (sold separately)



Intimidator Spot 155

Intimidator Spot 155 is a bright, compact, and lightweight LED moving head, perfect for mobile applications. Rely on it to energize any dance floor with fast and precise movements, crisp optics and even output. Built-in performance features like separate color and gobo wheels, ultra-smooth dimming and adjustable strobe speed enhance any light show. Minimize programming time with built-in movement macros, move-in-black features and sound-activated and automated programs that can generate a synchronized show in master/slave mode. This user-friendly fixture also offers individual reset of pan/tilt, color, and gobo. Multiple units can be power linked to save time running cables and extension cords. Fits best in the CHS-X5X VIP Gear Bag.



- DMX Channels: 6 or 11
- Light Source: 1 LED (white) 32 W (2.3 A), 50,000 hours
- Beam Angle: 17°
- Gobos: 9 + open (9 aluminum), continuous scroll at variable speeds
- Colors: 9 + white, continuous scroll at variable speeds
- Illuminance: 4,860 lux @ 2 m
- Input Voltage: 100 to 240 VAC, 50/60 Hz (auto-ranging)
- Weight: 4.4 kg
- Size: 205 x 211 x 291 mm

For complete specifications, visit ChauvetDJ.eu



Gobos



Colors



Optional IRC-6 Remote (sold separately)

Intimidator Barrel 305 IRC

Intimidator Barrel 305 IRC is a compact LED barrel scanner with a 60 W light source and a crisp 3-facet prism that allows you to cover larger areas by splitting the beam. Link up to 4 fixtures to create synchronized shows in automated, sound or master/slave mode. Save time running cables and extension cords. Minimize programming time using built-in movement macros and move-in-black features. For easy, (non-DMX) operation, control it with the optional IRC-6 remote. Fits best in the CHS-40 VIP Gear Bag.



- DMX Channels: 7 or 11
- Pan and Tilt: 180°/360° (continuous)
- Light Source: 1 LED (white) 60 W (2.3 A), 50,000 hours
- Beam Angle: 12°
- Gobos: 7 + open (5 metal + 2 glass), rotating, interchangeable, slot-n-lock, continuous scroll at variable speeds
- Gobo Size: 23.9mm outside, 20.5 mm image, 1 mm max thickness
- Colors: 8 + white, split colors, continuous scroll at variable speeds
- Illuminance: 1,630 lux @ 2 m (per beam)
- Input Voltage: 100 to 240 VAC, 50/60 Hz (auto-ranging)
- Weight: 4.8 kg
- Size: 171 x 255 x 480 mm

For complete specifications, visit ChauvetDJ.eu



Gobos



Colors



Optional IRC-6 Remote (sold separately)

Intimidator Scan 305 IRC

Intimidator Scan 305 IRC features a bright 60 W LED and a crisp 3-facet prism that allows you to split the beam and cover larger areas. Link up to 4 fixtures to create synchronized shows in automated, sound or master/slave mode. Save time running cables and extension cords. Minimize programming time using built-in movement macros and move-in-black features. For easy (non-DMX) operation, control it with the optional IRC-6 remote. Fits best in the CHS-40 VIP Gear Bag.



- DMX Channels: 7 or 11
- Light Source: 1 LED (white) 60 W (2.3 A), 50,000 hours
- Beam Angle: 15°
- Gobos: 7 + open (5 metal + 2 glass), rotating, interchangeable, slot-n-lock, continuous scroll at variable speeds
- Gobo Size: 23.9 mm outside, 20.5 mm image, 1 mm max thickness
- Colors: 8 + white, split colors, continuous scroll at variable speeds
- Illuminance: 9,110 lux @ 2 m
- Input Voltage: 100 to 240 VAC, 50/60 Hz (auto-ranging)
- Weight: 4.6 kg
- Size: 430 x 255 x 147 mm

For complete specifications, visit ChauvetDJ.eu



Gobos



Colors



Freedom Everywhere

100% battery operated and DMX wireless fixtures



Control any Freedom fixture using your Smartphone or tablet from a range of up to 600 feet. See how (p.43)



Freedom Stick Pack

Freedom Stick Pack Includes: 4 Freedom Sticks, 1 Multi-Charger, 1 IRC-6 Remote and 1 Carrying Bag. Is a unique and versatile free-standing RGB LED set, that can be pixel-mapped for ultimate programming creativity. These battery powered fixtures have a built-in D-Fi transceiver that allows them to be placed anywhere. The sticks also work excellently as truss warmers. A detachable metal base allows you to mount them on truss (clamps sold separately). User-customizable automated programs create complex looks in seconds. Additional control options include auto and sound-activated programs via DMX, wireless master/slave or the IRC-6 remote.

- DMX Channels: 3, 8, 48, or 50
- Light Source: 32 SMD LEDs (tri-color RGB) 0.2 W (50mA), 50,000 hours
- Coverage Angle: 360°
- Maximum Run Time (all on): up to 8 hours
- Weight: 1.6 kg
- Size: 161 x 161 x 1550 mm with base

For complete specifications, visit ChauvetDJ.eu



CHS-FR4 VIP Gear Bag (sold separately)



IRC-6 Remote Included

Freedom Par Hex-4

- DMX Channels: 6, 8, or 12
- Light Source: 4 LEDs (hex-color RGBAW+UV) 10 W (2 A), 50,000 hours
- Beam Angle: 23°
- Illuminance: 1,372 lux @ 2 m
- Maximum Run Time (all on): 8 hours
- Maximum Run Time (single color): 20 hours
- Input Voltage: 100 to 240 VAC, 50/60 Hz (auto-ranging)
- Weight: 2.9 kg
- Size: 138 x 145 x 184 mm

For complete specifications, visit ChauvetDJ.eu



Anti-glare shield



Built-in adjustable kickstand



Built-in threaded hole for easy mounting



CHS-FR4 VIP Gear Bag (sold separately)

IRC-6 Remote Included



Freedom Par Tri-6

- DMX Channels: 3, 4, 5, or 9
- Light Source: 6 LEDs (tri-color RGB) 3 W (600 mA), 50,000 hours
- Beam Angle: 15°
- Illuminance: 1,938 lux @ 2 m
- Maximum Run Time (all on): 8 hours
- Maximum Run Time (single color): 20 hours
- Input Voltage: 100 to 240 VAC, 50/60 Hz (auto-ranging)
- Weight: 2.6 kg
- Size: 138 x 145 x 184 mm

For complete specifications, visit ChauvetDJ.eu



Available in black or white

CHS-FR4 VIP Gear Bag (sold separately)



IRC-6 Remote Included

Freedom Par Quad-4 IP

- DMX Channels: 4, 6, or 10
- Light Source: 4 LEDs (quad-color RGBA) 5 W, (2 A), 50,000 hours
- Beam Angle: 15°
- Illuminance: 2,464 lux @ 2 m
- IP Rating: IP54
- Maximum Run Time (all on): 8 hours
- Maximum Run Time (single color): 20 hours
- Input Voltage: 100 to 240 VAC, 50/60 Hz (auto-ranging)
- Weight: 3.6 kg
- Size: 145 x 138 x 191 mm

For complete specifications, visit ChauvetDJ.eu





EXTERIOR



Outdoor Cables

CDIPPOWER5
5 m
Compatible with:
SlimPAR 56 IRC IP



IP5POWER
5 m
Compatible with:
SlimPANEL Tri 24 IP
COLORband PIX IP



CDIPSIG5
5 m
Compatible with:
SlimPANEL Tri 24 IP
SlimPAR 56 IRC IP



IRC-6 Remote Included



COLORband PiX IP

COLORband PiX IP is a must-have fixture for mobile DJs or club installers looking to create high-impact visuals by combining flicker free pixel-mapping effects and wash lighting at both indoor and outdoor events. The robust IP65-rated housing withstands water, snow and dirt.

- DMX Channels: 3, 4, 6, 7, 9, 12, 18 or 36
- Light Source: 12 LEDs (tri-color RGB) 3 W (1,050 mA), 50,000 hours
- Beam Angle: 20°
- Illuminance: 2,325 lux @ 2 m
- IP Rating: IP65
- Input Voltage: 100 to 240 VAC, 50/60 Hz (auto-ranging)
- Weight: 6.1 kg
- Size: 993 x 100 x 173 mm

For complete specifications, visit ChauvetDJ.eu



Freedom Par Quad-4 IP

Freedom Par Quad-4 IP is a 100% wireless, battery-operated, quad-color (RGBA) LED washlight with a built-in D-Fi transceiver and a robust housing that repels water, snow, dirt, and sand during outdoor events. Multiple wireless control options are available via the FlareCON Air and the FlareCON app or with the point-and-shoot IRC-6 Remote. Freedom Par Quad-4 IP also works in master/slave mode with first-generation Freedom fixtures.

- DMX Channels: 4, 6, or 10
- Light Source: 4 LEDs (quad-color RGBA) 5 W, (2 A), 50,000 hours
- Beam Angle: 15°
- Illuminance: 2,300 lux @ 2 m
- IP Rating: IP54
- Maximum Run Time (all on): 8 hours
- Maximum Run Time (single color): 20 hours
- Input Voltage: 100 to 240 VAC, 50/60 Hz (auto-ranging)
- Weight: 3.6 kg
- Size: 145 x 138 x 191 mm

For complete specifications, visit ChauvetDJ.eu





Compatible with IRC-6 Remote and D-Fi USB Transceiver (sold separately)

Sit-flat housing for easy cable access

COREpar 80 USB

COREpar 80 USB produces a full spectrum of light with the unsurpassed color mixing of COB (chip-on-board) technology. Includes a separate magnetic lens to provide the flexibility to go from an ultra-wide wash to a narrow beam in seconds. High frequency LED dimming achieves smooth LED fades and ensures a flicker-free performance in video applications. Multiple control options include DMX, master/slave and sound activation modes as well as wireless control thanks to D-Fi USB compatibility. Point-and-shoot operation of static colors and automated programs is also possible with the optional IRC-6 remote control.



- DMX Channels: 3 or 8
- Light Source: 1 COB LED (tri-color RGB) 80 W (2 A), 50,000 hours
- Beam Angle: 70° (without lens)
- Beam Angle: 25° (with lens)
- Illuminance: 405 lux @ 2 m (without lens)
- Illuminance: 2,143 lux @ 2 m (with lens)
- Input Voltage: 100 to 240 VAC, 50/60 Hz (auto-ranging)
- Weight: 2.0 kg
- Size: 200 x 143 x 253 mm

For complete specifications, visit ChauvetDJ.eu



Compatible with IRC-6 Remote and D-Fi USB Transceiver (sold separately)

Sit-flat housing for easy cable access

COREpar 40 USB

COREpar 40 USB produces a full spectrum of light with the unsurpassed color mixing of COB (chip-on-board) technology. Includes a separate magnetic lens to provide the flexibility to go from an ultra-wide wash to a narrow beam in seconds. High frequency LED dimming achieves smooth LED fades and ensures a flicker-free performance in video applications. Multiple control options include DMX, master/slave and sound activation modes as well as wireless control thanks to D-Fi USB compatibility. Point-and-shoot operation of static colors and automated programs is also possible with the optional IRC-6 remote control. The unit's robust sit-flat housing features power and DMX outlets on the side.



- DMX Channels: 3 or 8
- Light Source: 1 COB LED (tri-color RGB) 40 W (2 A), 50,000 hours
- Beam Angle: 40° (without lens)
- Beam Angle: 20° (with lens)
- Illuminance: 243 lux @ 2 m (without lens)
- Illuminance: 1,660 lux @ 2 m (with lens)
- Input Voltage: 100 to 240 VAC, 50/60 Hz (auto-ranging)
- Weight: 1.6 kg
- Size: 132 x 189 x 242 mm

For complete specifications, visit ChauvetDJ.eu



Compatible with IRC-6 Remote and D-Fi USB Transceiver (sold separately)

COREpar UV USB

COREpar UV USB is a compact UV wash with COB (chip-on-board) LED technology, it offers D-Fi USB compatibility for wireless master/slave or DMX control. It includes a separate magnetic lens to provide the flexibility to go from an ultra-wide wash to a narrow beam in seconds. High frequency LED dimming achieves smooth LED fades and ensures a flicker-free performance in video applications. Multiple control options include DMX, master/slave and sound activation modes as well as wireless control thanks to D-Fi USB compatibility.



- DMX Channels: 1 or 5
- Light Source: 1 COB LED (UV) 70 W (1.5 A), 50,000 hours
- Wavelength: 390 to 400 nm
- Coverage Angle: 100° without Fresnel lens, 50° with Fresnel lens
- Input Voltage: 100 to 240 VAC, 50/60 Hz (auto-ranging)
- Weight: 2.1 kg
- Size: 139 x 200 x 253 mm

For complete specifications, visit ChauvetDJ.eu



Compatible with IRC-6 Remote and D-Fi USB Transceiver (sold separately)

COLORband PiX USB

COLORband PiX USB is a linear LED wash light that functions as a pixel mapping effect, blinder or wall washer. It features D-Fi USB compatibility for wireless master/slave or DMX control. Pixel mapping functions mean you can create amazing animations and video effects. Access to multiple pre-built programs is available with or without DMX. The fixture's high-power, tri-color LEDs nearly eliminate multicolor shadows and its high-frequency LED dimming lets you achieve flicker-free operation suitable for video applications. Save time running cables and power cords by power linking multiple units. Fits best in the optional CHS-60 VIP Gear Bag. Also available in outdoor-rated version (See p. 13)



- DMX Channels: 3, 4, 6, 7, 8, 9, 12, 18, 36 or 41
- Light Source: 12 LEDs (tri-color RGB) 3 W (1,000 mA), 50,000 hours
- Beam Angle: 27°
- Illuminance: 2,245 lux @ 2 m
- Input Voltage: 100 to 240 VAC, 50/60 Hz (auto-ranging)
- Weight: 1.8 kg
- Size: 987 x 49 x 157 mm

For complete specifications, visit ChauvetDJ.eu





Compatible with IRC-6 Remote and D-Fi USB Transceiver (sold separately)

SlimPAR Pro H USB

SlimPAR Pro H USB is designed for any application that calls for a high-power, low-profile LED washlight with precise colors. Features include D-Fi USB compatibility for wireless control. SlimPAR Pro H USB has no moving parts and is flicker-free so it is ideal for quiet and on-camera applications. Generate a broad spectrum of colors and achieve natural-looking color temperatures with 6-in-1 LED technology. Fits best in the CHS-30 VIP Gear Bag.



- DMX Channels: 6, 7 or 12
- Light Source: 12 LEDs (hex-color RGBAW+UV) 10 W (2.4 A), 50,000 hours
- Beam Angle: 24°
- Illuminance: 3,218 lux @ 2 m
- Input Voltage: 100 to 240 VAC, 50/60 Hz (auto-ranging)
- Weight: 3.3 kg
- Size: 253 x 98 x 290 mm

For complete specifications, visit ChauvetDJ.eu



Compatible with IRC-6 Remote and D-Fi USB Transceiver (sold separately)



SlimPAR Pro Q USB

SlimPAR Pro Q USB is a high-powered quad-color (RGBA), low-profile washlight with D-Fi USB compatibility for wireless control. Dynamic and natural-looking amber LEDs provide expanded color mixing capabilities. Added light spill control is possible because the fixture is compatible with most 190.5 mm barn doors. Easily control static colors and automated programs with the optional IRC-6 remote and increase standalone versatility with multiple user-configurable settings. Fits best in the CHS-30 VIP Gear Bag.



- DMX Channels: 4, 5 or 10
- Light Source: 12 LEDs (quad-color RGBA) 6 W (2 A), 50,000 hours
- Beam Angle: 16°
- Illuminance: 5,690 lux @ 2 m
- Input Voltage: 100 to 240 VAC, 50/60 Hz (auto-ranging)
- Weight: 3.3 kg
- Size: 253 x 98 x 290 mm

For complete specifications, visit ChauvetDJ.eu



Compatible with IRC-6 Remote and D-Fi USB Transceiver (sold separately)

SlimPAR Pro W USB

SlimPAR Pro W USB is a low-profile, variable white LED washlight featuring cool white, warm white, and amber LEDs. The fixture's adjustable color temperatures can match existing lighting in addition to providing the perfect temperature for video. Its flicker-free operation also makes it well-suited for on-camera use. D-Fi USB compatibility provides wireless master/slave or DMX control. Achieve smooth LED fading with built-in dimming curves that simulate halogen filaments. Fits best in the CHS-30 VIP Gear Bag.



- DMX Channels: 3, 4 or 9
- Light Source: 12 LEDs (tri-color CW, WW, A) 6 W (1.4 A), 50,000 hours
- Color Temperature Range: 1700 to 6300 K
- Beam Angle: 17°
- Illuminance: 3,097 lux @ 2 m
- Input Voltage: 100 to 240 VAC, 50/60 Hz (auto-ranging)
- Weight: 3.2 kg
- Size: 253 x 98 x 290 mm

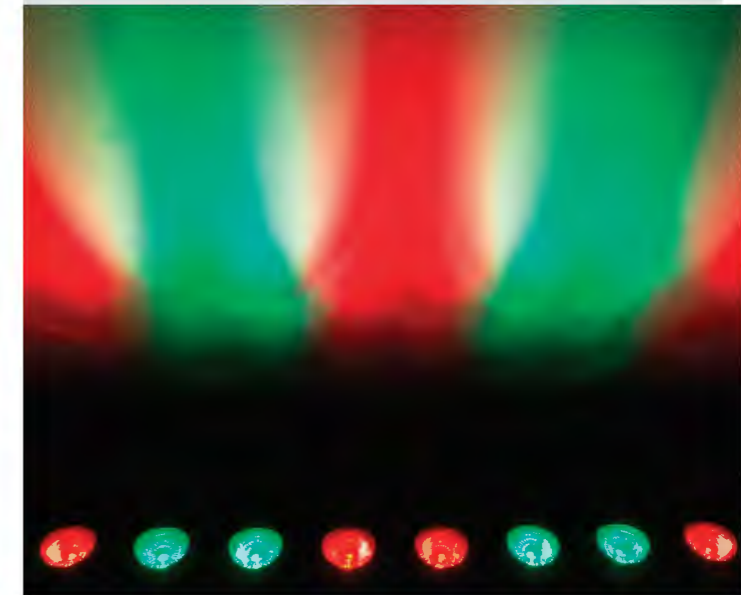
For complete specifications, visit ChauvetDJ.eu



245° Rotating LED Strip Light



Compatible with IRC-6 Remote and D-Fi USB Transceiver (sold separately)



NEW

COLORband PiX-M USB

COLORband PiX-M USB, a moving LED strip light, is a versatile wall-wash light that can create dynamic sweeping, chase, animation and blinder effects thanks to its rotating base, pixel-mapping capabilities, and the ability to control each of its 10 LEDs separately. Its motors allow you to angle the light where it's needed. COLORband PiX-M USB features D-Fi USB compatibility for wireless master/slave or DMX control but you can also access dramatic, pre-built automated programs with or without DMX. Wireless, non-DMX operation is also available with the optional IRC-6 remote.

- DMX Channels: 5, 6, 8, 10, 17, 32 or 36
- Tilt: 245°
- Light Source: 10 LEDs (tri-color RGB) 9 W, (2A), 50,000 hours
- Beam Angle: 20°
- Illuminance: 6,120 lux @ 2 m
- Input Voltage: 100 to 240 VAC, 50/60 Hz (auto-ranging)
- Weight: 4.4 kg
- Size: 785 x 67 x 123 mm

For complete specifications, visit ChauvetDJ.eu





Compatible with IRC-6 Remote and D-Fi USB Transceiver (sold separately)

SlimBANK T18 USB

SlimBANK T18 USB is a powerful washlight with 18 tri-color (RGB) LEDs that achieve smooth color mixing. Adjustable barn doors help direct and focus the light. Convenient control options include auto and sound-activation programs as well as DMX. USB compatibility provides fast and easy wireless options.



Compatible with IRC-6 Remote and D-Fi USB Transceiver (sold separately)

SlimPAR H6 USB

SlimPAR H6 USB is a low-profile RGBAW+UV LED washlight with D-Fi USB compatibility for wireless master/slave or DMX control. It also works in sound-active mode. Built-in dimming curves provide smooth LED fading, and the 6-in-1 LED technology generates a broad spectrum of natural-looking colors. Precise colors can also be created with the built-in LED display. Point-and-shoot operation of static colors and automated programs is possible with the optional IRC-6 remote. Easily transports in the optional CHS-30 VIP Gear Bag.



IRC-6 Remote Included Optional D-Fi USB Transceiver (p.44) (sold separately)

EZpar T6 USB

EZpar T6 USB is a battery-operated, tri-color RGB LED wash light. D-Fi USB compatible for wireless master/slave or DMX control. Its rechargeable, lithium battery lasts up to 20 hours from a single charge and you can easily check the battery status with the built-in battery life indicator. Convenient access to RGB color mixing and static colors is available with or without DMX. Built-in automated programs via the IRC-6 remote or master/slave mode makes control easy. Transports best in the CHS-30 VIP Gear Bag.



SlimPAR 64 RGB

SlimPAR 64 RGB houses 180 red, green, blue and amber LEDs in a discreet, ultra-compact casing. It offers static colors and color mixing with or without DMX. Use built-in automated and sound-activated programs as well as pulse effects at variable speed for a show on the fly. Or create your own looks using a 4- or 8-channel DMX mode. Fits best in the CHS-25 VIP Gear Bag.



SlimPAR 56

SlimPAR 56 is a LED washlight in a sleek black housing. Powered by 108 red, green and blue LEDs, it blends into any décor with ease. Customize light shows in 3-or 7-channel DMX mode. Fits best in the CHS-SP4 VIP Gear Bag.



- DMX Channels: 3, 5, 9 or 13
- Light Source: 18 LEDs (tri-color RGB) 3 W (1050 mA), 50,000 hours
- Beam Angle: 17°
- Illuminance: 4,120 lux @ 2 m
- Input Voltage: 100 to 240 VAC, 50/60 Hz (auto-ranging)
- Weight: 3.6 kg
- Size: 394 x 74 x 259 mm

For complete specifications, visit ChauvetDJ.eu



- DMX Channels: 6, 8 or 12
- Light Source: 6 LEDs (hex-color RGBAW+UV) 10 W (2.4 A), 50,000 hours
- Beam Angle: 23°
- Illuminance: 747 lux @ 2 m
- Input Voltage: 100 to 240 VAC, 50/60 Hz (auto-ranging)
- Weight: 1.6 kg
- Size: 211 x 91.5 x 244 mm

For complete specifications, visit ChauvetDJ.eu



- DMX Channels: 3 or 8
- Light Source: 6 LEDs (tri-color RGB) 3 W, (820 mA), 50,000 hours
- Beam Angle: 19°
- Illuminance: 1,440 lux @ 2 m
- Maximum Run Time (all on): up to 8 hours
- Maximum Run Time (single color): 20 hours
- Input Voltage: 100 to 240 VAC, 50/60 Hz (auto-ranging)
- Weight: 1.7 kg
- Size: 180 x 105 x 231 mm

For complete specifications, visit ChauvetDJ.eu



- DMX Channels: 4 or 8
- Light Source: 180 LEDs (39 red, 39 green, 51 blue, 51 amber) 0.25 W (20 mA), 100,000 hours
- Beam Angle: 14°
- Illuminance: 1,325 lux @ 2 m
- Input Voltage: 100 to 240 VAC, 50/60 Hz (auto-ranging)
- Weight: 1.3 kg
- Size: 276 x 275 x 66 mm

For complete specifications, visit ChauvetDJ.eu



- DMX Channels: 3 or 7
- Light Source: 108 LEDs (36 red, 36 green, 36 blue) 0.25 W (20 mA), 100,000 hours
- Beam Angle: 14°
- Illuminance: 876 lux @ 2 m
- Input Voltage: 100 to 240 VAC, 50/60 Hz (auto-ranging)
- Weight: 1.2 kg
- Size: 241 x 224 x 56 mm

For complete specifications, visit ChauvetDJ.eu





Compatible with IRC-6 Remote and D-Fi USB Transceiver (sold separately)

SlimPAR T6 USB

SlimPAR T6 USB is a low profile, high output tri-color (RGB) LED washlight with D-Fi USB compatibility for wireless master/slave or DMX control. As versatile as it is dependable, this compact fixture is an ideal truss warmer. Because of its even output, it's also an excellent front light, and its flicker-free output makes it an ideal light for broadcast/video applications. Tri-color LEDs virtually eliminate multicolored shadows. SlimPAR T6 USB has multiple user-configurable settings, and built-in automated programs are easily accessed via master/slave or the optional IRC-6 remote. Multiple units can be power linked. The CHS-30 VIP Gear Bag is recommended for transport.



- DMX Channels: 3 or 8
- Light Source: 6 LEDs (tri-color RGB) 3 W (800 mA), 50,000 hours
- Beam Angle: 15°
- Illuminance: 1,621 lux @ 2 m
- Input Voltage: 100 to 240 VAC, 50/60 Hz (auto-ranging)
- Weight: 1.1 kg
- Size: 181 x 84 x 226 mm

For complete specifications, visit ChauvetDJ.eu



Compatible with IRC-6 Remote and D-Fi USB Transceiver (sold separately)

SlimPAR T12 USB

SlimPAR T12 USB is a high output tri-color (RGB) LED washlight with D-Fi USB compatibility to allow instant wireless control in DMX or master/slave mode. Tri-color LEDs virtually eliminate distracting multicolored shadows. Its even, flicker-free output makes it ideal for front light applications and use in video productions. The optional IRC-6 remote can be used to access automated programs and control static colors. Compact enough to fit inside truss sticks, SlimPAR T12 USB is best transported in the CHS-30 VIP Gear Bag.



- DMX Channels: 3 or 8
- Light Source: 12 LEDs (tri-color RGB) 3 W (1 A), 50,000 hours
- Beam Angle: 15°
- Illuminance: 3,801 lux @ 2 m
- Input Voltage: 100 to 240 VAC, 50/60 Hz (auto-ranging)
- Weight: 1.8 kg
- Size: 227 x 84 x 252 mm

For complete specifications, visit ChauvetDJ.eu



Compatible with IRC-6 Remote and D-Fi USB Transceiver (sold separately)

SlimPAR Q6 USB

SlimPAR Q6 USB is a low-profile, high-output quad-color (RGBA) LED washlight that features 6 LEDs and D-Fi USB compatibility for instant wireless connectivity. It is controllable via master/slave, DMX, standalone modes or the optional point-and-shoot IRC-6 remote. It also features multiple user-configurable settings. SlimPAR Q6 USB creates natural-looking color temperatures thanks to punchy amber LEDs. Its flicker free operation makes it well suited for video productions. With no moving parts, it is ideal for applications where silence is essential. Multiple units can be power linked to save time running cables and extension cords. Fits best in the CHS-30 VIP Gear Bag.



- DMX Channels: 4 or 9
- Light Source: 6 LEDs (quad-color RGBA) 4 W (0.9 A), 50,000 hours
- Beam Angle: 19°
- Illuminance: 2,684 lux @ 2 m
- Input Voltage: 100 to 240 VAC, 50/60 Hz (auto-ranging)
- Weight: 1.6 kg
- Size: 212 x 92 x 244 mm

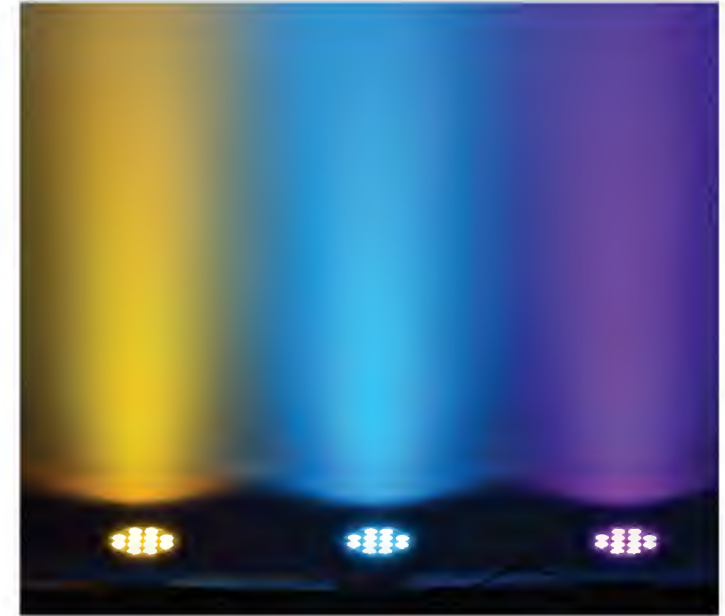
For complete specifications, visit ChauvetDJ.eu



Compatible with IRC-6 Remote and D-Fi USB Transceiver (sold separately)

SlimPAR Q12 USB

SlimPAR Q12 USB is a low-profile, high-output quad-color (RGBA) LED washlight with D-Fi USB for instant wireless connectivity. It is controllable via master/slave, DMX, standalone modes or the optional point-and-shoot IRC-6 remote. It also features multiple user-configurable settings. SlimPAR Q12 USB creates natural-looking color temperatures thanks to punchy amber LEDs. Its flicker free operation makes it well suited for video productions. With no moving parts, it is ideal for applications where silence is essential. Multiple units can be power linked to save time running cables and extension cords. Fits best in the CHS-30 VIP Gear Bag.



- DMX Channels: 4 or 9
- Light Source: 12 LEDs (quad-color RGBA) 4 W (0.8 A), 50,000 hours
- Beam Angle: 17°
- Illuminance: 4,960 lux @ 2 m
- Input Voltage: 100 to 240 VAC, 50/60 Hz (auto-ranging)
- Weight: 2.2 kg
- Size: 247 x 92 x 293 mm

For complete specifications, visit ChauvetDJ.eu



All about EVE

A new day of production lighting power



Optional D-Fi USB Transceiver
(sold separately)



Optional D-Fi USB Transceiver
(sold separately)

EVE E-50Z

EVE E-50Z is an LED ellipsoidal that shines a hard-edged, warm white spot and features D-Fi™ USB compatibility for wireless master/slave or DMX control. Manual zoom gives you the flexibility to project from any distance and its framing shutters let you easily alter and control the projected beam. EVE E-50Z includes holders for glass and steel gobos as well as a gel frame. You can operate EVE E-50Z in standalone mode eliminating the need for DMX control and you can save time running extension cords by power linking multiple units.

- DMX Channels: 1 or 3
- Light Source: 1 LED (warm white) 50 W, (1.3 A), 50,000 hours
- Color Temperature: 3500 K
- Gobo Size: D (53.3 mm outside, 43 mm image, 2 mm max thickness)
- Zoom Angle (manual): 20° to 39°
- Illuminance (20°): 7,910 lux narrow @ 2 m
- Illuminance (39°): 2,710 lux wide @ 2 m
- Input Voltage: 100 to 240 VAC, 50/60 Hz (auto-ranging)
- powerCON®-compatible power input/output connections for power linking
- Weight: 4.2 kg
- Size: 480 x 157 x 381 mm

For complete specifications, visit ChauvetDJ.eu



EVE E-100Z

EVE E-100Z is a powerful spot fixture featuring sharp pattern projection with a 100 W warm white LED light source. Features D-Fi USB compatibility for wireless master/slave or DMX control. This versatile fixture works with metal or glass gobos to create incredible gobo or pattern details. The manual zoom and framing shutters make it simple to control beams.

- DMX Channels: 1 or 3
- Light Source: 1 LED (warm white) 100 W (2.3 A), 50,000 hours
- Color Temperature: 3500 K
- Gobo Size: M 66 mm outside, 48 mm image, 2 mm max thickness
- Zoom Angle (manual): 14° to 30°
- Illuminance (14°): 15,100 lux @ 2 m
- Illuminance (30°): 3,800 lux @ 2 m
- Input Voltage: 100 to 240 VAC, 50/60 Hz (auto-ranging)
- Weight: 5.7 kg
- Size: 611 x 183 x 430 mm

For complete specifications, visit ChauvetDJ.eu



All about EVE

A new day of production lighting power



Track Adaptor Included



Optional D-Fi USB Transceiver
(sold separately)



NEW

EVE TF-20

EVE TF-20 is a compact, energy efficient, soft edge LED accent luminaire that can function as a regular PAR can, while its classic Fresnel style emulates stage and theatrical lighting. Conveniently included barn doors block light from unwanted areas, letting you focus on a particular space or object. Thanks to its CCR (Constant Current Reduction) LED dimming, it works seamlessly with conventional dimmers, and is flicker-free in filmed productions. MET certified, it is equally suited for new and retrofit installations via the included track adaptor as it is for mobile use right out of the box using its standard power cord.

- Light Source: 1 COB LED (warm white) 20 W, (0.5 A), 50,000 hours
- Color Temperature: 2700 K
- Beam Angle: 24°
- Illuminance: 1,506 lux @ 2 m
- Input Voltage: 85 to 120 VAC, 50/60 Hz (auto-ranging)
- Weight: 1.2 kg
- Size: 153.5 x 140 x 184 mm

For complete specifications, visit ChauvetDJ.eu



NEW

EVE F-50Z

EVE F-50Z is a powerful warm white 50 W Fresnel fixture, perfect for theatrical, worship and broadcast installations. It features D-Fi USB compatibility for wireless Master/Slave or DMX control. Included barn doors and gel frame let you shape and color the beam for the perfect spot. EVE F-50Z has a locking power connector and its smooth dimming capabilities make it great for video applications. EVE F-50Z is easily controllable via DMX.

- DMX Channels: 1 or 3
- Light Source: 1 LED (warm white) 50 W, (1.3 A), 50,000 hours life expectancy
- Color Temperature: 3500 K
- Zoom Angle (manual): 17° to 50°
- Illuminance (17°): 4,780 lux @ 2 m
- Illuminance (50°): 998 lux @ 2 m
- Input Voltage: 100 to 240 VAC, 50/60 Hz (auto-ranging)
- powerCON®-compatible power input/output connections for power linking
- Weight: 3.9 kg
- Size: 281 x 212 x 328 mm

For complete specifications, visit ChauvetDJ.eu





Stand Included



LED Followspot 120ST

LED Followspot 120ST is a portable, LED followspot that emits a tight beam powered by a bright 120 W LED to highlight actors at far distances. Built-in CTO filter lowers color temperature to match tungsten lamps. Control options include DMX and manual modes and you can simplify professional fading with smooth LED dimming. Focus the light where it is needed using the mechanical iris to reduce the beam's diameter and deliver silent operation with fast electronic strobe and no moving parts.



Optional IRC-6 Remote (sold separately)

LED Pinspot 3

LED Pinspot 3 is a palm-sized pinspot that can be turned on/off and dimmed from a distance via the optional IRC-6 remote. A pack of 5 gels is included to let you easily change colors.



LED Pinspot 2

LED Pinspot 2 includes 2 front focal lens options to produce hard-edged beams for a variety of applications. It weighs less than a pound and is powered by a 3 W white LED. The auto switching power supply allows the fixture to adapt to the voltage provided, ranging from 100 V to 240 V.



Optional IRC-6 Remote (sold separately)

Mini Kinta IRC

Mini Kinta IRC is fitted with 3 W LEDs to punch through nearly any ambient lighting or fog. Filling a room floor to ceiling with razor sharp beams, it delivers an output that surpasses those of much larger derby effects. DMX controllable, it also features exciting built-in programs. An optional IRC-6 remote is available for wireless control. Fits best in the CHS-30 VIP Gear Bag.



Optional IRC-6 Remote (sold separately)

Kinta FX

Kinta FX combines an LED derby effect, laser and SMD strobe in one compact fixture. These effects can be coordinated to create a variety of exciting looks that feature multicolored derby beams, dynamic strobes and chases plus hundreds of sharp red and green laser beams. Control this versatile fixture easily via DMX, master/slave, optional IRC-6 remote or its digital display. Multiple units can be power linked to save time running cables and extension cords. Fits best in the CHS-30 VIP Gear Bag.



- DMX Channels: 3
- Light Source: 1 LED (cool white) 120 W (30.6 A), 50,000 hours
- Zoom Angle (manual): 14° to 20°
- Colors: 7 + white
- Illuminance (14°): 16,060 lux @ 2 m
- Illuminance (20°): 7,900 lux @ 2 m
- Input Voltage: 100 to 240 VAC, 50/60 Hz (auto-ranging)
- Weight: 7.5 kg
- Size: 582 x 279 x 341 mm

For complete specifications, visit ChauvetDJ.eu



Colors



- Light Source: 1 LED (cool white) (5 W) 1.6 A, 50,000 hours
- Beam Angle: 8°
- Illuminance: 3,558 lux @ 2 m
- Input Voltage: 100 to 240 VAC, 50/60 Hz (auto-ranging)
- Weight: 0.5 kg
- Size: 116.5 x 104 x 68 mm

For complete specifications, visit ChauvetDJ.eu

Color Gels Included



- Light Source: 1 LED (cool white) 3 W (700 mA), 50,000 hours
- Beam Angle: 6° (installed), 9° (included)
- Illuminance (6°): 4,120 lux @ 2 m
- Illuminance (9°): 1,335 lux @ 2 m
- Input Voltage: 100 to 240 VAC, 50/60 Hz (auto-ranging)
- Weight: 0.4 kg
- Size: 193 x 105 x 148 mm

For complete specifications, visit ChauvetDJ.eu

Color Gels Included



- DMX Channels: 4
- Light Source: 4 LEDs (1 red, 1 green, 1 blue, 1 white) 3 W (980 mA), 50,000 hours
- Input Voltage: 100 to 240 VAC, 50/60 Hz (auto-ranging)
- Weight: 1.6 kg
- Size: 191 x 241 x 184 mm

For complete specifications, visit ChauvetDJ.eu



- DMX Channels: 2 or 9
- Light Source:
 - Derby: 4 LEDs (1 Red, 1 Green, 1 Blue, 1 White) 7.5 W (2.4 A), 50,000 hours
 - Strobe: 16 SMD LEDs (white) 5 W (1.6 A), 50,000 hours
 - Laser: 650 nm/100 mW (Red) laser diode, 532 nm/30 mW (Green) laser diode
- Input Voltage: 100 to 240 VAC, 50/60 Hz (auto-ranging)
- Weight: 1.7 kg
- Size: 187 x 261 x 187 mm

For complete specifications, visit ChauvetDJ.eu



Laser light.
 Avoid direct eye exposure.
 Classified per EN/IEC 60825-1:2007
 Complies with FDA performance standards
 for laser products except for deviations
 pursuant to Laser Notice No. 50,
 dated June 24, 2007



*Patent Pending

Stand, Carry Bag, Tripod Carry Bag, Wireless Footswitch and IRC-6 Remote included

MSR Best Lighting Product of 2016

GigBAR 2

GigBAR 2 is a powerful pack-n-go 4-in-1 lighting system including UV in its wash lights and strobes for better color mixing and effects. GigBAR 2 includes 2 LED Derby fixtures, LED wash lights, a laser, and 4 high-power, LED strobe lights all mounted on one bar. The unit features phenomenal built-in automated and sound-activated programs including all 4 effects. You can easily control the unit from the display, IRC-6 remote control, wireless foot switch or DMX to take your gig to a higher level. Master/slave multiple units and save time running cables and extension cords by power linking multiple units. Get in and get out quickly with the included tripod, wireless footswitch and FREE carry bags.

- DMX Channels: 3, 11 or 23
- Light Source:
 - Pars: 6 LEDs (quad-color RGB+UV) 3.5 W (1.1 A), 50,000 hours
 - Strobe: 4 LEDs (white & UV) 1.8 W (600 mA), 50,000 hours
 - Derby: 6 LEDs (2 red, 2 green, 2 blue) 6 W (1.7 A), 50,000 hours
 - Laser: 650nm/100 mW (red) laser diode, 532nm/30 mW (green) laser diode
- Stand Height: 1.5 to 2.5 m
- Input Voltage: 100 to 240 VAC, 50/60 Hz (auto-ranging)
- Weight: 6.6 kg
- Size: 1185 x 110 x 386.5 mm

For complete specifications, visit ChauvetDJ.eu



Laser light.
Avoid direct eye exposure.
Class 3R laser product.
Classified per EN/IEC 60825-1:2007
Complies with FDA performance standards for laser products except for deviations pursuant to Laser Notice No. 50, dated June 24, 2007



Stand, Carry Bag, and Footswitch included

Compatible with IRC-6 Remote and D-Fi USB Transceiver (sold separately)

4BAR LT USB

4BAR LT USB is a complete wash lighting system with D-Fi USB compatibility for wireless master/slave or DMX control. Four fully adjustable round pods each with three 9 W LEDs achieve total room or stage coverage. Create coordinated light shows in master slave mode and easily control static colors and automated programs with the optional IRC-6 remote. You can easily set up and tear down in seconds with the included tripod, carry bags and footswitch.



- DMX Channels: 3 or 15
- Light Source: 12 LED (tri-color RGB) 9 W (1.2 A), 50,000 hours
- Beam Angle: 16°
- Illuminance: 2,053 lux @ 2 m
- Input Voltage: 100 to 240 VAC, 50/60 Hz (auto-ranging)
- Weight: 4.9 kg
- Size: 918.1 x 95 x 274.3 mm

For complete specifications, visit ChauvetDJ.eu



Carry Bag included

Optional Stand (sold separately)

4PLAY

4PLAY is fitted with 4 LED moonflowers containing red, green, blue and white LEDs that produce razor-sharp rotating beams. Control options include automated, sound and DMX modes. It fits most standard tripods, including speaker stands and the 4BAR tripod. Travel bag included.



- DMX Channels: 6
- Light Source: 228 LEDs (48 red, 72 green, 72 blue, 36 white) 0.25 W (20 mA), 100,000 hours
- Input Voltage: 100 to 240 VAC, 50/60 Hz (auto-ranging)
- Weight: 5.7 kg
- Size: 838 x 89 x 318 mm

For complete specifications, visit ChauvetDJ.eu





Easily store and transport in the included gear bag

MotionOrb

MotionOrb is fantastic décor light made up of 55 color-changing LED orbs in strings that can be hung like a curtain, drawn to one side, or draped across the ceiling. MotionOrb comes standard in a 2-meter length, but can be expanded up to 4 meters with the optional MotionOrb EXT Kit. MotionOrb comes with a variety of built-in color changes and chases, and when operated in DMX mode it can be pixel mapped! In master/slave mode, color changes and chases can be expanded across 3 MotionOrb products for a wall full of coordinated patterns. MotionOrb can be operated via the control panel, or with a DMX controller.



Compatible with IRC-6 Remote and D-Fi USB Transceiver (sold separately)

Festoon

Festoon is a dynamic outdoor-rated party décor light featuring the vintage look and feel of standard party light strings. It is completely pixel-mappable for ultimate show and programming creativity. Built-in automated programs also create complex looks in seconds. Festoon comes with a 15-meter strand of 20 LED bulbs and is expandable up to 3 strands per controller. The unit features D-Fi USB compatibility for wireless master/slave or DMX control. Non-DMX control is possible in Standalone mode from the digital display or optional IRC-6 remote. Eyelets are on every lamp holder to increase design flexibility. Fits best in the CHS-50 gear bag.



Carry Bag and controller included

MotionDrape LED

MotionDrape LED is an ideal backdrop for stages and mobile shows. It has 176 tri-color SMD LEDs set in a matrix across the 2 x 3 m surface. Thirty animated effects range from color fades to a graphic equalizer effect. MotionDrape LED is easy to setup using the grommets on all sides.



Compatible with IRC-6 Remote and D-Fi USB Transceiver (sold separately)

Abyss USB

Abyss USB is a pleasing multicolored water effect that shines through any environment with or without fog using upgraded, high power LEDs. It can be controlled wirelessly via master/slave or DMX thanks to its D-Fi USB compatibility. A dichroic color wheel and 2 glass effect wheels are independently controllable to expand design options. Non-DMX control is possible in stand-alone mode, from the digital display or optional IRC-6 remote control. Save time running cables and extension cords by power linking multiple units. Fits best in the CHS-40 VIP Gear Bag.



Compatible with IRC-6 Remote and D-Fi USB Transceiver (sold separately)



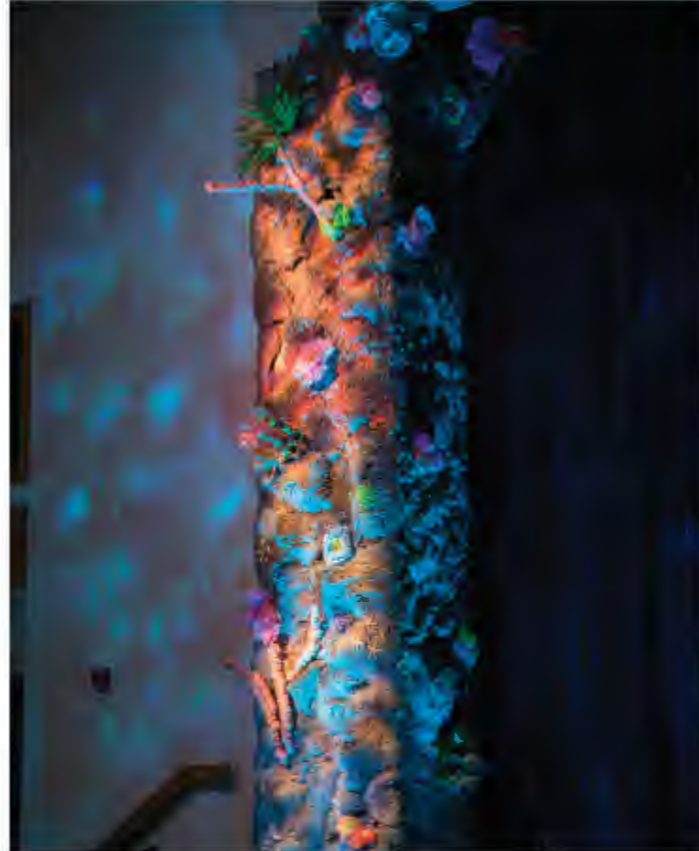
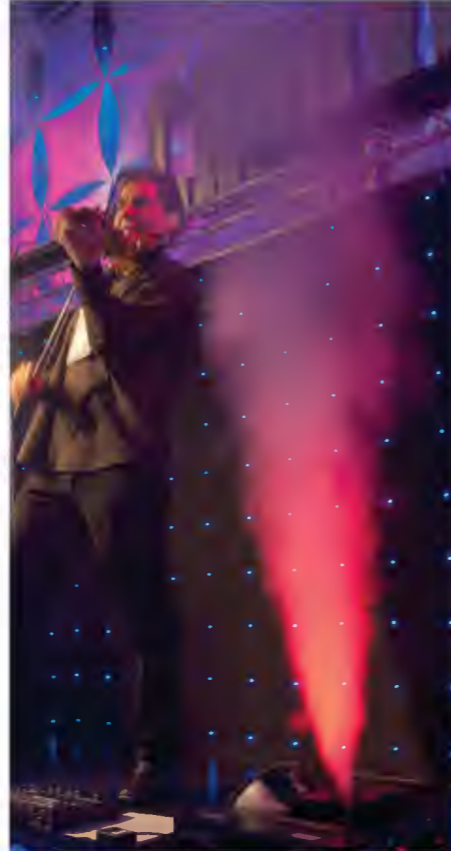
Gobo Zoom USB

Gobo Zoom USB is a super compact gobo projector with a manual zoom, and wireless connectivity in master/slave and DMX mode, thanks to its embedded D-Fi USB compatibility. Gobo Zoom USB includes 10 wedding-ready gobos. Gobo Zoom USB can be controlled without DMX using the optional IRC-6 remote. Gobo Zoom USB accepts custom gobos, including patterns and messages easily printed on transparency film. Fits best in the CHS-40 VIP Gear Bag.

GOBO PROJECTORS



Mounts to most truss systems using 10 mm and 12 mm threaded bolt holes



- DMX Channels: 9, 165, 240 or 315
- Light Source: 110 LEDs (tri-color RGB) SMD (100 mA), 50,000 hours
- Input Voltage: 100 to 240 VAC, 50/60 Hz (auto-ranging)
- Weight: 3.7 kg
- Size: 1,013 x 65 x 2,343 mm

For complete specifications, visit ChauvetDJ.eu

- DMX Channels: 3, 8, 9, 60, 120 or 180
- Light Source: 6 SMD LED's (tri-color RGB) (50 mA) per bulb, 50,000 hours
- Input Voltage: 100 to 240 VAC, 50/60 Hz (auto-ranging)
- IP Rating: IP43
- Weight: (Controller): 4.8 kg
- Size: (String): 15000 x 60 x 133 mm (Controller): 190 x 213 x 48.7 mm

For complete specifications, visit ChauvetDJ.eu

- DMX Channels: 8
- Light Source: 176 SMD LEDs (tri-color RGB) (20 mA), 50,000 hours
- Input Voltage: 100 to 240 VAC, 50/60 Hz (auto-ranging)
- Weight (Controller): 0.8 kg
- Weight (Drape): 4.4 kg
- Size (Controller): 135 x 243 x 50 mm
- Size (Drape): 2 x 3 m

For complete specifications, visit ChauvetDJ.eu

- DMX Channels: 3
- Light Source: 1 LED (cool white) 30 W (7 A), 50,000 hours
- Coverage Angle: 59°
- Colors: 5 + white, Rainbow scroll
- Illuminance: 715 lux @ 2 m
- Input Voltage: 100 to 240 VAC, 50/60 Hz (auto-ranging)
- Weight: 2.7 kg
- Size: 195 x 228 x 246 mm

For complete specifications, visit ChauvetDJ.eu

- DMX Channels: 2
- Light Source: 1 LED (cool white) 25 W (6 A), 50,000 hours
- Zoom Angle (manual): 17° to 28°
- Gobo Size: 25.74 mm outside, 19.38 mm max image, 1 mm max thickness
- Illuminance: (17°) 3,075 lux @ 2 m
- Illuminance: (28°) 1,121 lux @ 2 m
- Input Voltage: 100 to 240 VAC, 50/60 Hz (auto-ranging)
- Weight: 2.1 kg
- Size: 238 x 124 x 244 mm

For complete specifications, visit ChauvetDJ.eu



Increase the length of the MotionOrb with the MotionOrb EXT Kit (sold separately)



Increase the length of the Festoon with the Festoon EXT Kit (sold separately)



10 Wedding Ready Gobos included





Optional IRC-6 Remote
(sold separately)

NEW

FXarray Q5

FXarray Q5 is an exciting and versatile quad-color LED wash light. It features an array of RGB+UV LEDs to spread light evenly across the dance floor with brilliant eye candy effects. Control the wash LEDs and the RGB SMDs separately for dynamic light shows and generate eye-catching effects with sound-activated and automated programs. FXarray Q5 is compatible with IRC-6 for flexible control over all features.



Optional IRC-6 Remote
(sold separately)

NEW

FXpar 3

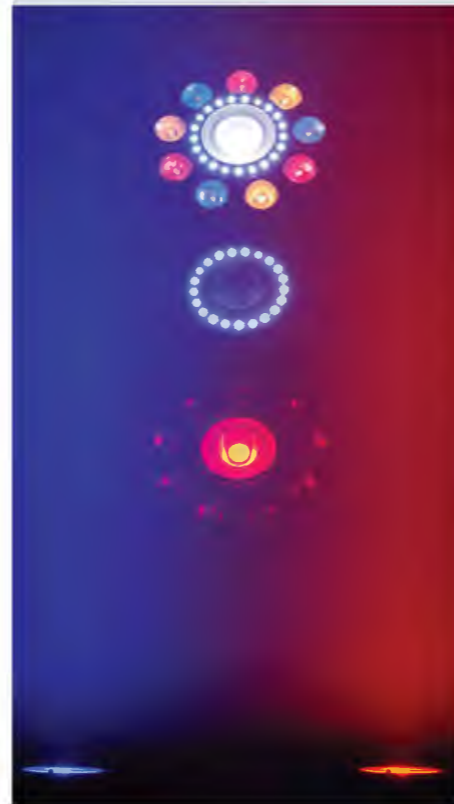
FXpar 3 is a compact effect par with multiple technologies in a single fixture. It includes three 8 W quad-color (RGB+UV) center LEDs, RGB SMD LED lights and SMD strobes. Separate control of these features makes creating breathtaking effects easy. FXpar 3 is compatible with IRC-6 for flexible control over all features and includes powerful sound-activated and automated programs.



Optional IRC-6 Remote
(sold separately)

FXpar 9

FXpar 9 is a dynamic and compact multi-effect fixture. It has an outer ring of RGB+UV LEDs, a center LED, and SMD strobes, each featuring separate control. Mutable zones allow for spectacular effects via DMX. Sound activation, automated programs or easy control via the optional IRC-6 remote also let you easily achieve eye-catching effects. Save time setting up with power linking.



- DMX Channels: 3, 10 or 30
- Light Source:
Center Pods: 5 LEDs (quad-color RGB+UV) 6W, (2.1 A), 50,000 hours
Outside SMDs: 30 SMDs (tri-color RGB) 0.3 W, (0.1 A), 50,000 hours
- Input Voltage: 100 to 240 VAC, 50/60 Hz (auto-ranging)
- Weight: 1.6 kg
- Size: 285 x 207 x 155 mm

For complete specifications, visit ChauvetDJ.eu



- DMX Channels: 3 or 9
- Light Source:
Center Pods: 3 LEDs (quad-color RGB+UV) 8 W, (2.4 A), 50,000 hours
Center SMDs: 18 LEDs (tri-color RGB) 0.5 W, (0.2 A), 50,000 hours
Strobe: 27 LEDs (cool white) 0.5 W, (0.1 A), 50,000 hours
- Input Voltage: 100 to 240 VAC, 50/60 Hz (auto-ranging)
- Weight: 1.1 kg
- Size: 264 x 214 x 76.9 mm

For complete specifications, visit ChauvetDJ.eu



- DMX Channels: 6, 9 or 22
- Light Source:
Outside Pods: 9 LEDs (quad-color RGB+UV) 4 W, (1.4 A), 50,000 hours
Center Pod: 1 LED (tri-color RGB COB) 18.4 W, (2 A), 50,000 hours
Strobe: 21 LEDs (cool white SMDs) 0.5 W, (0.2 A), 50,000 hours
- Input Voltage: 100 to 240 VAC, 50/60 Hz (auto-ranging)
- Weight: 1.6 kg
- Size: 279 x 275 x 74 mm

For complete specifications, visit ChauvetDJ.eu



360°
Continuous
Rotation

Optional IRC-6 Remote
(sold separately)



NEW

Helicopter Q6

Helicopter Q6 is a multi-effect light designed to dazzle and energize the dance floor. It features adjustable RGBW beams, a round SMD strobe and a red/green pattern laser on a rotating base with continuous pan rotation creating unique and amazing effects. Its narrow, razor-sharp beams of RGBW light create astonishing aerial effects and the rotating red and green laser produces thousands of razor sharp beams that cover a large area. Helicopter Q6 is easy to control using automated and sound-activated programs, master/slave, DMX or an optional IRC-6 remote.

- DMX Channels: 3 or 16
- Light Source
Beam: 6 (RGBW) 6.9 W, (2 A), 50,000 hours
Strobe: 24 LEDs (white) 1 W, (281 mA), 50,000 hours
Laser: 650 nm/100 mW (red) laser diode, 532 nm/30 mW (green) laser diode
- Input Voltage: 100 to 240 VAC, 50/60 Hz (auto-ranging)
- Weight: 4.0 kg
- Size: 605 x 184 x 268 mm

For complete specifications, visit ChauvetDJ.eu



Laser light.

Avoid direct eye exposure.

Classified per EN/IEC 60825-1:2007

Complies with FDA performance standards for laser products except for deviations pursuant to Laser Notice No. 50, dated June 24, 2007





Optional IRC-6 Remote
(sold separately)

Swarm Wash FX

Swarm Wash FX is a 4-in-1 LED effect fixture that combines an RGBAW rotating derby, RGB+UV wash, red/green laser, and a ring of white SMD strobes. Create an endless array of looks by individually controlling each effect via DMX and master/slave modes, or an optional IRC-6 remote. Other features include automated and sound-activated programs and a user-friendly menu structure. Multiple units can be power linked to save time running cables and extension cords. Fits best in the CHS-40 VIP Gear Bag.



Optional IRC-6 Remote
(sold separately)

MSR
Best Lighting Product of 2015

Swarm 4 FX

Swarm 4 FX combines 3 dynamic lighting effects in one rugged and compact housing. It includes quad-color (RGBA) dual moonflowers, a green laser and a white strobe. The dual moonflowers spin enough colorful beams to fill an entire dance floor with energy and excitement. Added impact is provided by thousands of razor sharp red and green beams produced by the laser. The bright output of the strobe ring, which features built-in motion effects, adds to the fun. Control options include sound activation, master/slave, DMX modes or the optional IRC-6 remote.



Swarm 5 FX

Swarm 5 FX is a 3-in-1 LED effect fixture that combines red and green lasers, white strobe effects, and multicolored rotating derby effects into one compact setup. Match the look of any event by creating customized light shows with separate color and program control. Quickly create a look using built-in automated and sound-activated programs, or master/slave and DMX mode. Create a synchronized light show and save time running cables and extension cords by power-linking multiple units. Fits best in the CHS-40 VIP Gear Bag.



NEW

Rotosphere Q3

Rotosphere Q3 is an easy to use mirror ball simulator with high-power, quad-color LEDs. Three LED zones emit up to 3 different colors simultaneously and the slow speed of rotation creates the perfect atmosphere for slow dancing. Rotosphere Q3 is easily controllable with the optional IRC-6 remote and the digital display even allows you to set a color and rotation speed without any controller. Mount Rotosphere Q3 to truss with the included bracket or place it on a stand as a centerpiece. Fits best in the CHS-50 VIP Gear Bag.

Optional IRC-6 Remote
(sold separately)



DJ Bank

DJ Bank is a staple of garage bands and entry-level mobile DJs. This compact bank-style fixture features 4 pods of LEDs for dynamic chase effects that quickly add color and energy. The "all-on" option activates all 4 pods at once to wash the room. Fits best in the CHS-SP4 VIP Gear Bag.



BOB LED

BOB LED is the hottest simulated flame effect light on the market, but generates no heat. This LED powered, duty-cycle free fixture perfectly simulates a flickering cauldron. BOB LED can either stand on included legs or hang from an included chain.



- DMX Channels: 2 or 18
- Light Source:
Rotating Derby: 5 LEDs (1 red, 1 green, 1 blue, 1 amber, 1 white) 2W (650mA) 50,000 hours
Wash: 8 LEDs (quad-color RGB+UV) 1.5 W (600mA), 50,000 hours
Strobe: 12 LEDs (white) 1 W (300 mA), 50,000 hours
Laser: 650 nm/100 mW (red) laser diode, 532 nm/30 mW (green) laser diode
- Input Voltage: 100 to 240 VAC, 50/60 Hz (auto-ranging)
- Weight: 4.2 kg
- Size: 335x 332 x 241 mm

For complete specifications, visit ChauvetDJ.eu



- DMX Channels: 2 or 12
- Light Source:
Moonflower: 2 LEDs (quad-color RGBA) 13 W (4.4 A), 50,000 hours
Strobe: 12 SMD LEDs (cool white) 1 W (300 mA), 50,000 hours
Laser: 532 nm/30 mW (green) laser diode
- Input Voltage: 100 to 240 VAC, 50/60 Hz (auto-ranging)
- Weight: 2.5 kg
- Size: 290 x 360 x 107 mm

For complete specifications, visit ChauvetDJ.eu



- DMX Channels: 9
- Light Source:
Derby: 5 LEDs (1 red, 1 green, 1 blue, 1 white, 1 amber) 3 W (300 mA), 50,000 hours;
Strobe: 8 LEDs (white) 1 W (300 mA), 50,000 hours
Laser: 532 nm/50 mW (green) laser diode, 650 nm/100 mW (red) laser diode
- Input Voltage: 100 to 240 VAC, 50/60 Hz (auto-ranging)
- Weight: 4.5 kg
- Size: 225 x 298 x 310 mm

For complete specifications, visit ChauvetDJ.eu



- DMX Channels: 3, 9, or 19
- Light Source: 5 LEDs (quad-color RGBW) 7 W, (2.4 A), 50,000 hours
- Coverage Angle: 360°
- Input Voltage: 100 to 240 VAC, 50/60 Hz (auto-ranging)
- Weight: 3.9 kg
- Size: 266 x 319 x 419 mm

For complete specifications, visit ChauvetDJ.eu



- Light Source: 140 LEDs (35 red, 35 green, 35 blue, 35 amber) 0.25 W (20 mA), 100,000 hours
- Beam Angle: 14°
- Illuminance: 541 lux @ 2 m
- Input Voltage: 120 VAC, 60 Hz or 230 V, 50 Hz
- Weight: 1.4 kg
- Size: 401 x 114 x 140 mm

For complete specifications, visit ChauvetDJ.eu



- Light Source: 66 LEDs (54 orange, 12 blue) 0.25 W (20 mA), 100,000 hours
- Input Voltage: 120 VAC, 60 Hz or 230 VAC, 50 Hz
- Weight (with legs): 2.3 kg
- Size (with legs): 455 x 455 x 775 mm
- Size (with chains): 280 x 280 x 737 mm

For complete specifications, visit ChauvetDJ.eu

Laser light.
Avoid direct eye exposure.
Classified per EN/IEC 60825-1:2007
Complies with FDA performance standards for laser products except for deviations pursuant to Laser Notice No. 50, dated June 24, 2007



Laser light.
Avoid direct eye exposure.
Classified per EN/IEC 60825-1:2007
Complies with FDA performance standards for laser products except for deviations pursuant to Laser Notice No. 50, dated June 24, 2007



Laser light.
Avoid direct eye exposure.
Classified per EN/IEC 60825-1:2007
Complies with FDA performance standards for laser products except for deviations pursuant to Laser Notice No. 50, dated June 24, 2007



Hex-LED Technology

The trillion Color Difference

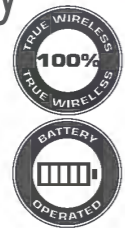
A CHAUVET DJ Hex-LED fixture is much more than a blacklight. It creates not only intense UV light but also superb colors and white uplighting washes.



Create and mix unique UV colors



3 powerful options with Hex-LED Technology



Freedom Par Hex-4
(See p. 11)



SlimPAR H6 USB
(See p. 18)



SlimPAR PRO H USB
(See p. 16)



Compatible with IRC-6 Remote and D-Fi USB Transceiver (sold separately)

COREpar UV USB

COREpar UV USB is a compact UV wash with COB (chip-on-board) LED technology, it offers D-Fi USB compatibility for wireless master/slave or DMX control. It includes a separate magnetic lens to provide the flexibility to go from an ultra-wide wash to a narrow beam in seconds. High frequency LED dimming achieves smooth LED fades and ensures a flicker-free performance in video applications. Multiple control options include DMX, master/slave and sound activation modes as well as wireless control thanks to D-Fi USB compatibility.



- DMX Channels: 1 or 5
- Light Source: 1 COB LED (UV) 70 W (1.5 A), 50,000 hours
- Wavelength: 390 to 400 nm
- Coverage Angle: 100° without Fresnel lens, 50° with Fresnel lens
- Input Voltage: 100 to 240 VAC, 50/60 Hz (auto-ranging)
- Weight: 2.1 kg
- Size: 139 x 200 x 253 mm

For complete specifications, visit ChauvetDJ.eu



Optional IRC-6 Remote (sold separately)

LED Shadow

LED Shadow is a panel wash that delivers stunning blacklight effects. Built-in auto programs trigger flash and strobe in patterns.



- DMX Channels: 3
- Light Source: 192 LEDs (UV) 0.25 W (20 mA), 100,000 hours
- Coverage Angle: 28°
- Input Voltage: 100 to 240 VAC, 50/60 Hz (auto-ranging)
- Weight: 2.2 kg
- Size: 356 x 248 x 165 mm

For complete specifications, visit ChauvetDJ.eu





ATMOSPHERICS



Nimbus

Nimbus is a professional dry ice machine that delivers thick, low-lying clouds of fog that hugs the floor and dissipates without rising. It provides an outstanding return on investment to rental houses and event producers, and is ideally suited for a wedding party's first dance. This powerful machine heats enough water to create fog from 4.5 kg of dry ice to provide 6 minutes of run time. Output and flow are easily controlled, due to an adjustable multi-level control arm. Dual heaters ensure faster heat-up and recycle times. A low water sensor increases safety.



Wireless Remote Included

Geyser P6

Geyser P6 creates a dynamic and safe pyrotechnic-like effect without the use of any toxic chemicals, fire or heavy CO2 canisters. Achieve beautiful color mixing with Penta-color LED (RGBA+UV) technology so bursts of fog take on exciting illumination possibilities. Instant on/off technology means precise timing and cue triggering. Control options include built-in DMX, the included FC-W, or manual control.



- Tank Capacity: 17 L
- Heat-up Time (single element): 50 min
- Heat-up Time (dual element): 30 min
- Reheat time (single element): 30 min
- Reheat time (dual element): 15 min
- Average runtime: 6 min
- Input Voltage: 120 VAC, 60 Hz or 230 VAC, 50 Hz
- Dry ice capacity: 4.5 kg
- Weight (full): 34 kg
- Size: 513 x 465 x 470 mm

For complete specifications, visit ChauvetDJ.eu



Nimbus Cart

Easily transport your Nimbus dry ice machine to and from the car and around the dance floor.

- Load Capacity: 34 kg
- Weight: 2.7 kg
- Dimensions: 426 x 379 x 132 mm

- DMX Channels: 10
- Output: 17,000 cfm
- Light Source: 6 LEDs (penta-color RGBA+UV) 7 W (2.5 A), 50,000 hours
- Tank Capacity: 2.5 L
- Input Voltage: 120 VAC, 60 Hz or 230 VAC, 50 Hz
- Weight: 8.8 kg
- Size: 442 x 310 x 175 mm

For complete specifications, visit ChauvetDJ.eu



Non-toxic, non-flammable paper confetti refills



Wireless Remote Included

Funfetti Shot

Funfetti Shot is a wirelessly controlled professional confetti launcher. Easily set up by one person, it sends powerful blasts of confetti flying for distances up to 9 m and covering an area as large as 50 m². Each powerful bursts of confetti lasts as long as 25 seconds. The launcher can be controlled in manual, wireless and DMX modes. For added versatility, it works with a variety of confetti types including metallic and UV. A double-bracketed yoke allows easy floor mounting or hanging. Safe and convenient, Funfetti Shot does not rely on compressed air or CO2. For easy transport, use the CHS-50 VIP Gear Bag.



Multi-Color Refill

Mirror Refill

UV Reactive Refill

- DMX Channels: 1
- Maximum Confetti Capacity (FRC and FRU Confetti): 0.25 kg
- Maximum Confetti Capacity (FRM Confetti): 0.45 kg
- Maximum Continuous Launch Duration: 25 s
- Maximum Throw Distance: 9 m
- Average Coverage Area: 50 m²
- Input Voltage: 120 VAC, 60 Hz or 230 VAC, 50 Hz
- Weight: 6.2 kg
- Size: 284 x 228 x 553 mm

For complete specifications, visit ChauvetDJ.eu



Remote Included

Hurricane 700

Hurricane 700 is a water-based fogger that delivers a 1,500 cfm output. It only takes 2.5 minutes to heat up and comes with a wired remote.

- Tank Capacity: 0.6 L
- Input Voltage: 120 VAC, 60 Hz or 230 V, 50 Hz
- Output: 1,500 cfm
- Weight: 1.8 kg
- Size: 215 x 180 x 124 mm

For complete specifications, visit ChauvetDJ.eu



Remote Included

Hurricane 901

Hurricane 901 is a compact, water-based fogger with an output of 4,000 cfm and a quick heat up time of 1.5 minutes. Its LED-illuminated tank lets you see the fluid level from a distance. A wired remote is included.

- Tank Capacity: 1.3 L
- Input Voltage: 120 VAC, 60 Hz or 230 V, 50 Hz
- Output: 4,000 cfm
- Weight: 3.5 kg
- Size: 264 x 221 x 231 mm

For complete specifications, visit ChauvetDJ.eu



Wired and Wireless Remote Included

Hurricane 1000

Hurricane 1000 is a lightweight and compact fog machine combining dense water-based fog output and portability. It can be operated from a distance using either the included wired & wireless remote. After an initial heat up period, it is always ready to provide fog on demand. A manual fog button puts easy control at your fingertips. The LED-illuminated tank enhances operation and safely indicates heater status and fluid levels.

- Tank Capacity: 1.0 L
- Input Voltage: 120 VAC, 60 Hz or 230 V, 50 Hz
- Output: 10,000 cfm
- Weight: 2.7 kg
- Size: 301 x 225 x 208 mm

For complete specifications, visit ChauvetDJ.eu



FC-T Included

Hurricane 1600

Hurricane 1600 is a compact, DMX-controllable high output fog machine. With an ultra-fast initial heat up time, it is always ready to provide a water-based fog on demand. A manual fog button puts easy control at your fingertips. The LED-illuminated tank safely indicates the heater status and fluid levels. An advanced fluid sensor with automatic shut-off protects the pump from overheating.

- DMX Channels: 1
- Tank Capacity: 2.4 L
- Input Voltage: 120 VAC, 60 Hz or 230 V, 50 Hz
- Output: 25,000 cfm
- Weight: 6 kg
- Size: 348 x 312 x 253 mm

For complete specifications, visit ChauvetDJ.eu



FC-T Included

Hurricane 1200

Hurricane 1200 is a powerful and portable water-based fog machine that brings any light show to life with a thick water-based fog output. The included timer remote controls the output of fog for precise performance. After an initial heat up period, it is always ready to provide fog on demand. A manual fog button puts easy control at your fingertips. The LED-illuminated tank safely indicates the heater status and fluid levels. An advanced fluid sensor with automatic shut-off protects the pump from overheating.

- Tank Capacity: 1.0 L
- Input Voltage: 120 VAC, 60 Hz or 230 VAC, 50 Hz
- Output: 18,000 cfm
- Weight: 2.9 kg
- Size: 286 x 235 x 209 mm

For complete specifications, visit ChauvetDJ.eu



FC-T Included

Hurricane Haze 4D

Hurricane Haze 4D is a low profile hazer with an adjustable scoop to direct the haze and a discreet fan. It can be controlled with the included wired timer remote and built-in DMX.

- DMX Channels: 2
- Output: 4,300 cfm
- Tank Capacity: 3.75 L
- Input Voltage: 120 VAC, 60 Hz or 230 VAC, 50 Hz
- Weight: 6 kg
- Size: 277 x 396 x 245 mm

For complete specifications, visit ChauvetDJ.eu



FC-T Included

Hurricane 1400

Hurricane 1400 is a high output fog machine featuring "always ready" technology that provides a residue-free, water-based fog on demand. Other features include a manual fog button that puts easy control at your fingertips, a timer that provides variable output, an advanced fluid sensor with automatic shut-off to protect the pump from overheating, and an LED-illuminated tank for enhanced operation.

- Tank Capacity: 2 L
- Input Voltage: 120 VAC, 60 Hz or 230 VAC, 50 Hz
- Output: 21,500 cfm
- Weight: 4.7 kg
- Size: 360 x 256 x 235 mm

For complete specifications, visit ChauvetDJ.eu



FC-T Included

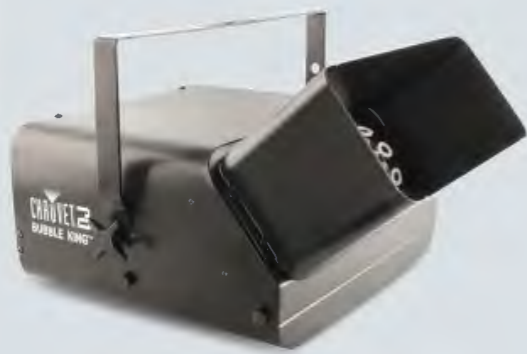
Hurricane Haze 1DX

Hurricane Haze 1DX creates a light water-based haze to enhance any light show. Easily set the DMX address and stand-alone operation using the digital display. The haze output and blower speed can be adjusted in stand-alone mode using the digital display with no controller required. Output can also be adjusted using the included FC-T wired timer remote and DMX. A built in sensor helps prolong the hazer's life by stopping the pump automatically when the fluid level is low.

- DMX Channels: 1
- Output: 800 cfm
- Tank Capacity: 1.5 L
- Input Voltage: 120 to 230 VAC, 50/60 Hz
- Weight: 3.3 kg
- Size: 278 x 150 x 223 mm

For complete specifications, visit ChauvetDJ.eu





Bubble King

B-550 Bubble King is the biggest name in bubble effects, featuring 3 double wands, a manual bubble button, and extremely high output. This is the perfect machine when you need bubbles for a large area.



- Tank Capacity: 1.7 L
- Input Voltage: 120 VAC, 60 Hz or 230 VAC, 50 Hz
- Weight: 5.9 kg
- Size: 483 x 381 x 305 mm

For complete specifications, visit ChauvetDJ.eu



Bubble Machine

B-250 Bubble Machine is designed for large areas where portability is a top priority. It is lightweight, thanks to an all plastic construction that also prevents rust, and conveniently features an easily removable fluid tank.



- Tank Capacity: 0.7 L
- Input Voltage: 120 VAC, 60 Hz or 230 VAC, 50 Hz
- Weight: 3.1 kg
- Size: 318 x 178 x 165 mm

For complete specifications, visit ChauvetDJ.eu



Atmospheric Remotes



Wireless Motion Sensor (WMS)

Compatible with Geyser P6, Geyser P4, Funfetti Shot, Hurricane 1800 Flex, Hurricane 1600, Hurricane 1400, Hurricane 1200, Hurricane 1000, Hurricane 901



Wireless Remote (FC-W)

Compatible with Hurricane 1800 Flex, Hurricane 1600, Hurricane 1400, Hurricane 1200, Hurricane 1000, Hurricane 901,

Atmospheric Fluids



HJ5

High Performance Haze Fluid



FJ5

High Density Fog Fluid



GJ5

Quick Dissipating Fluid



BJ5

High Performance Bubble Fluid



CJ250

Fog Machine Cleaning Fluid



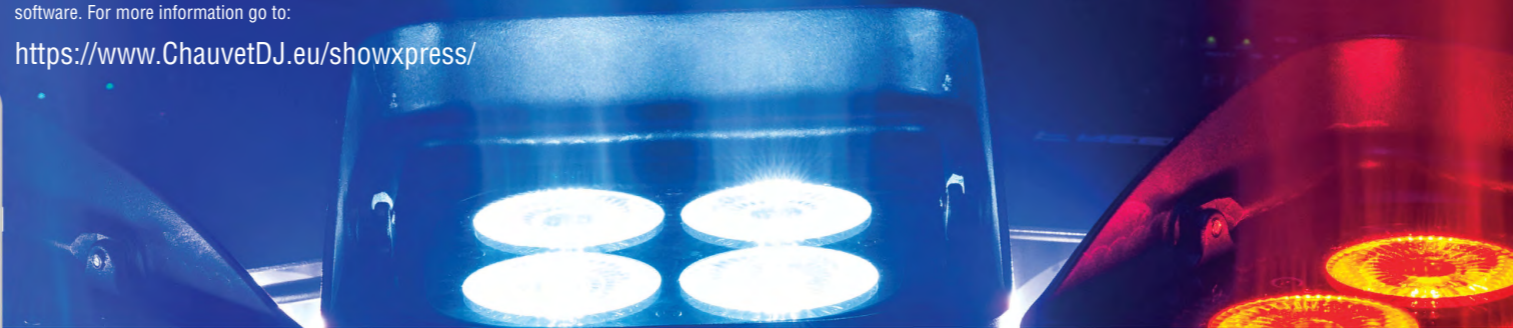
ShowXpress

ShowXpress is a free software program that turns almost any computer into a lighting console. It allows direct control over simple PAR cans to the most complex moving lights. All you need is a computer (PC or Mac), a ShowXpress interface and ShowXpress software. The software is now available as an app for your smartphone. You can take ShowXpress on the road and go mobile! Pre-configured for RGB, RGBA, RGBW, and RGBWA fixtures, Pixels makes the creation of show-stopping effects fast and easy, and is included free as a part of your ShowXpress software. For more information go to:

<https://www.ChauvetDJ.eu/showxpress/>

FlareCON

FlareCON app is available for both Android and iOS® in both phone and tablet versions. The FlareCON Air can also connect directly to a DMX controller to send wireless signals out to an unlimited number of D-Fi lights or receivers.



Compatible

Xpress 512

Xpress 512 is a self-contained DMX-512 interface for the ShowXpress software. The interface is capable of transmitting one universe of DMX and works on both Windows and Mac OS X platforms. Multiple units can be connected for multiple universes of control. Users can store and playback one show without a computer or unlimited shows with a computer.

- Input Voltage: 5V USB
- Weight: 0.2 kg
- Size: 108 x 80 x 37 mm

For complete specifications, visit ChauvetDJ.eu



Optional Xpress Remote (sold separately)

Compatible

Xpress 512 Plus

Xpress 512 Plus brings you the same capabilities of the Xpress 512, plus an external triggering that is available via a mini-DIN connection or an optional infrared remote. An internal calendar can also trigger playback at a specific time without a computer.

- Input Voltage: 5V USB or 9-12 VDC, 300 mA external power supply (not included)
- Weight: 0.3 kg
- Size: 119 x 89 x 47 mm

For complete specifications, visit ChauvetDJ.eu



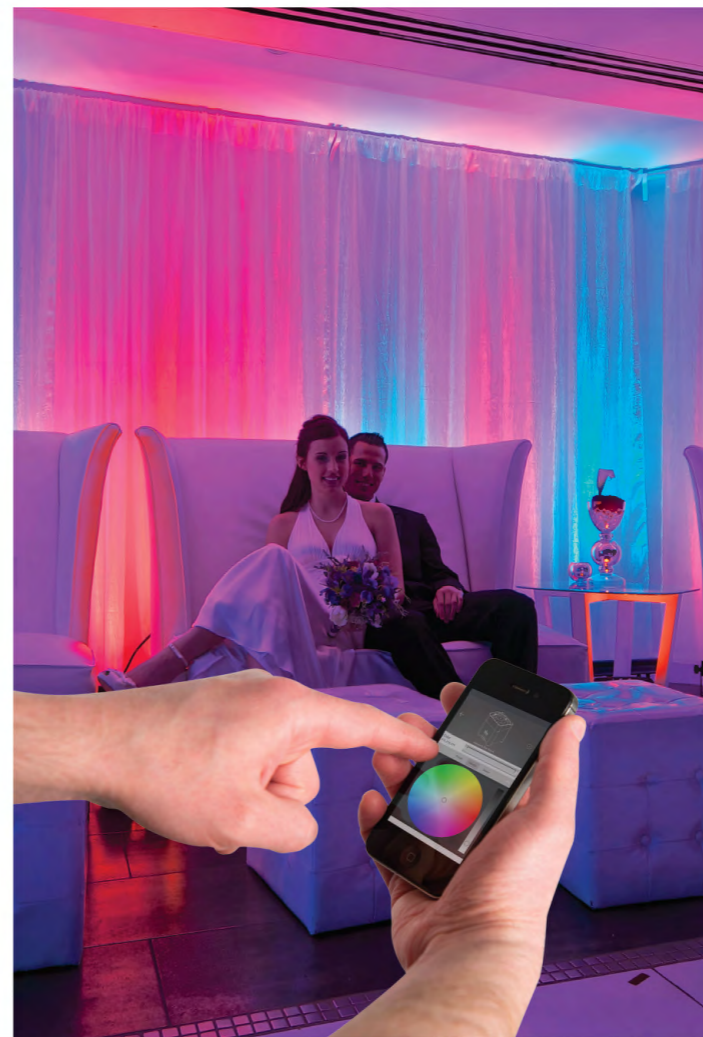
Compatible

Xpress 100

Xpress 100 provides a USB to DMX interface for up to 100 DMX channels. It allows for an unlimited number of shows when connected to a computer.

- Input Voltage: 5V USB
- Weight: 0.1 kg
- Length: 1 m

For complete specifications, visit ChauvetDJ.eu



FC

FlareCON Air

FlareCON Air is a wireless transceiver that turns a smartphone or mobile tablet into a DMX lighting controller. It takes Wi-Fi signals from any mobile device and turns them into D-Fi signals for any D-Fi-ready light or hub. The FlareCON app works exclusively with FlareCON Air. FlareCON Air can also connect directly to a DMX controller and then send D-Fi out to D-Fi compatible products or hubs. FlareCON Air is fully FCC and RTTE compliant.

- DMX Channels: 512
- Operating Frequency: 2.412 - 2.484 GHz
- Antenna connection: RP-SMA
- Max Unobstructed Distance: 183 m
- Input Voltage: 9 VDC, 500 mA (external power supply: 100 to 240 VAC, 50/60 Hz)
- Weight: 0.6 kg
- Size: 142 x 91 x 46 mm

For complete specifications, visit ChauvetDJ.eu



D-Fi USB*

The world's first and only D-Fi USB transceiver



*Patent Pending

CHAUVET DJ has developed a series of fixtures that include a standard USB connection. You can now wirelessly connect to all of them using the new D-Fi USB transceiver, which eliminates the need for any DMX cables. The USB transceiver is powered directly from the fixture. Control your USB fixtures using any of our wireless controllers, or from your smartphone with the D-Fi Hub and FlareCON.

Specifications

- Operating Frequency: 2.412 to 2.484 GHz
- Max Unobstructed Distance: 50 m
- Weight: 31.2 g
- Size: 78 x 25 x 13 mm

For complete specifications, visit ChauvetDJ.eu

D-Fi USB Compatible Fixtures



4BAR LT USB (p. 27)



COLORband PiX USB (p. 15)



COLORband PiX-M USB (p. 17)



Abyss USB (p. 29)



Gobo Zoom USB (p. 29)



EVE E-100Z (p. 22)



EVE E-50Z (p. 22)



EVE F-50Z (p. 23)



COREpar 40 USB (p. 14)



COREpar 80 USB (p. 14)



COREpar UV USB (p. 15)



SlimBANK T18 USB (p. 18)



SlimPAR H6 USB (p. 18)



SlimPAR Pro H USB (p. 16)



SlimPAR Pro Q USB (p. 16)



SlimPAR Pro W USB (p. 16)



SlimPAR Q12 USB (p. 21)



SlimPAR Q6 USB (p. 21)



EZpar T6 USB (p. 18)



SlimPAR T12 USB (p. 20)



SlimPAR T6 USB (p. 20)



Festoon (p. 28)

IRC-6

IRC-6 is an easy-to-use infrared remote control (IRC) for all CHAUVET DJ IRC-enabled lighting fixtures. It provides instant access to pre-programmed scenes, color mixing options, and on-the-fly speed adjustments. This compact and lightweight remote has an approximate range of 9 m. IRC-6 compatible fixtures include all CHAUVET DJ fixtures ending in IRC as well as the EZ and Freedom series fixtures and many more!



- Max Unobstructed Distance: 4.6 m
- Input Voltage: 3 VDC lithium battery (CR2025)
- Weight: 20 g
- Size: 100 x 47 x 7 mm

For complete specifications, visit ChauvetDJ.eu

NEW**DMX-AN**

DMX-AN is a converter that functions as an Art-Net to DMX or DMX to Art-Net interface. It features a multi-purpose Art-Net/sACN node that converts 1 Ethernet cable to 2 DMX universes. Its built-in web-based GUI means no universe/subnet setup and its durable Neutrik® etherCON® in/through port ensures reliability. DMX-AN supports power over Ethernet (POE) or an external power supply and both outputs can be set to either Art-Net or sACN.



- DMX Channels: 1024
- DMX Connectors: 3-pin XLR
- Control Protocol: Art-Net, DMX, sACN
- Input Voltage (DC): 9 VDC, 500 mA (external power supply: 100 to 240 VAC, 50/60 Hz)
- Input Voltage (POE): 48V 0.4 A
- Weight: 0.2 kg
- Size: 120 x 64 x 39 mm

For complete specifications, visit ChauvetDJ.eu

Obey 70

Obey 70 bridges the gap between smaller rack mount controllers and massive control desks. Fourteen reversible faders and an assignable joystick allow for easy programming of up to twelve 32-channel fixtures. Obey 70 can store up to 6 sets of chases containing 240 scenes on 384 total channels of control. It also features fog and strobe control, as well as MIDI compatibility.



- DMX Channels: 384
- Input Voltage: 9 VDC, 500 mA (external power supply: 100 to 240 VAC, 50/60 Hz)
- Weight: 3.3 kg
- Size: 483 x 178 x 71 mm

For complete specifications, visit ChauvetDJ.eu

Obey 40

Obey 40 controls up to twelve 16-channel fixtures. Obey 40 has 30 banks on 8 scenes, or up to 240 scenes. It also offers fog and strobe control and MIDI compatibility.



- DMX Channels: 192
- Input Voltage: 9 VDC, 500 mA (external power supply: 100 to 240 VAC, 50/60 Hz)
- Weight: 2.6 kg
- Size: 483 x 89 x 171 mm

For complete specifications, visit ChauvetDJ.eu

D-Fi Hub

D-Fi Hub is a wireless transceiver that converts D-Fi to DMX, or DMX to D-Fi. The D-Fi Hub wirelessly synchronizes an unlimited number of D-Fi-ready lights and products. It turns any DMX controller into a wireless D-Fi controller, or if you already have a CHAUVET D-Fi controller, save yourself the trouble of a long DMX run by placing the D-Fi Hub up in your rig. D-Fi Hub is small and lightweight and has many mounting options.



- Input Voltage: 9 VDC, 500 mA (external power supply: 100 to 240 VAC, 50/60 Hz)
- Operating Frequency: 2.412 to 2.484 GHz
- Weight: 0.6 kg
- Size: 102 x 82 x 41 mm

For complete specifications, visit ChauvetDJ.eu

NEW**DMX-RT**

DMX-RT is a rugged and compact DMX recording device with triggerable playback. Copy, backup and transfer show files with a built-in micro SD card slot and included micro SD card. The unit comes with a mounting bracket for convenient mounting options. The digital display is easy to navigate and lets you easily trigger scenes.



- Programmable Scenes: 999
- Memory Card: 8GB (included) 32GB (max) Micro SD
- Memory Card Format: FAT32
- DMX Connectors: 3-pin XLR
- Input Voltage: 12 VDC, 1 A (external power supply: 100 to 240 VAC, 50/60 Hz)
- Weight: 0.2 kg
- Size: 77 x 73 x 43 mm

For complete specifications, visit ChauvetDJ.eu

Obey 10

Obey 10 is a compact controller ready to handle the complexities of today's lighting fixtures. Capable of controlling up to eight 16-channel fixtures, Obey 10 can store 6 sets of chases containing up to 999 scenes each.



- DMX Channels: 128
- Input Voltage: 9 VDC, 500 mA (external power supply: 100 to 240 VAC, 50/60 Hz)
- Weight: 1.8 kg
- Size: 483 x 89 x 89 mm

For complete specifications, visit ChauvetDJ.eu

Obey 6

Obey 6 is a compact DMX controller capable of controlling up to six 6-channel fixtures, perfect for hex-LED (RGBAW+UV) fixtures. It allows you to control effects by simultaneously operating each fixture in different playback modes, with variable fade times. Playback options include manual RGBAW+UV, automated and sound-activated mode. Increase control with adjustable audio sensitivity, strobe and blackout effects.



- DMX Channels: 36
- Input Voltage: 9 VDC, 500 mA (external power supply: 100 to 240 VAC, 50/60 Hz)
- Weight: 1.8 kg
- Size: 393 x 140 x 47 mm

For complete specifications, visit ChauvetDJ.eu

Stage Designer 50

Stage Designer 50 is a powerful dimming unit that combines the size of a 24-channel dimming console and the functionality of a 48-channel console. Stage Designer 50 has up to 8 pages with 12 scenes each, and 96,000 programmable steps. The console allows you to re-assign channels as needed and allows for MIDI input.



- DMX Channels: 48
- Input Voltage: 9 VDC, 500 mA (external power supply: 100 to 240 VAC, 50/60 Hz)
- Weight: 4.5 kg
- Size: 483 x 267 x 89 mm

For complete specifications, visit ChauvetDJ.eu

Obey 4

Obey 4 is a compact DMX controller for LED washlights with a 3- or 4-channel DMX mode—red, green, blue and white/amber—for easy color-mixing control. It has built-in automated, sound-activated and manual playback options and can control fixtures in 4 different zones—independently of each other. It features one-touch buttons of pre-mixed colors, built-in chases and strobe and dimmer controls.



- DMX Channels: 16
- Input voltage: 9 VDC, 500 mA (external power supply: 100 to 240 VAC, 50/60 Hz)
- Weight: 1.4kg
- Size: 325 x 140 x 52 mm

For complete specifications, visit ChauvetDJ.eu

Obey 3

Obey 3 is a compact DMX controller for LED lights with 3 channels (red, green and blue only). Playback options include automated, sound-activated or manual RGB color mixing.



- DMX Channels: 3
- Input Voltage: 9 VDC, 500 mA (external power supply: 100 to 240 VAC, 50/60 Hz)
- Weight: 0.9 kg
- Size: 140 x 210 x 52 mm

For complete specifications, visit ChauvetDJ.eu

DMX-4

DMX-4 is a 4-channel dimmer/relay pack equipped with an automatic ON/OFF when DMX signal is detected. It provides DMX control and/or dimming to units not equipped with DMX on their own. It is optimized for use with small LED fixtures to prevent ghosting and flickering. Each of the 4 sets of outlets (duplex) can be set to any DMX address and independently set as a dimmer or relay. Sixteen user-selectable chase patterns make programming a breeze.



- DMX Channels: 1, 2, or 4
- Input Voltage: 100 to 240 VAC, 50/60 Hz (auto-ranging)
- Weight: 2.2 kg
- Size: 210 x 194 x 70 mm

For complete specifications, visit ChauvetDJ.eu

Data Stream 4

Data Stream 4 is a universal DMX-512 optical splitter that distributes the incoming DMX signal, in daisy chain configurations, into 4 separate outputs with an additional "thru" port.



- DMX Connectors: 3- and 5-pin XLR
- Rackmount: 1U
- Input Voltage: 100 to 240 VAC, 50/60 Hz (auto-ranging)
- Weight: 2.6 kg
- Size: 483 x 134 x 46 mm

For complete specifications, visit ChauvetDJ.eu

Portable Stands



CH-06 Tripod

- Stand Height: 2.7 m fully extended
- Load Capacity: 22 kg
- Weight: 5 kg

For complete specifications, visit ChauvetDJ.eu

Cables



EU CH-05
Load Capacity:
15 kg



PLIEC LINKING CABLE
Male-to-female IEC extension cable
• Available Lengths:
1.5 m
7.6 m



3-Pin DMX Cable
• Available Lengths:
1.5 m
3 m
7.6 m
15 m



DMX3F5M
3-pin (F) to 5-pin (M)
DMX turnaround
• Length: 154 mm



DMX5F3M
5-pin (F) to 3-pin (M)
DMX turnaround
• Length: 154 mm

Outdoor Cables See (p.13)



Extend the life of your rig, making it easy to travel from gig to gig

CHAUVET DJ VIP Gear Bags

CHAUVET DJ VIP Gear Bags are specifically designed for the mobile lighting market. Sturdy and stylish, they make a strong professional statement and help preserve your investment in lighting gear. All are expertly crafted with durable nylon, following the CHAUVET DJ tradition of excellence coupled with a steadfast commitment to unsurpassed value. All CHAUVET DJ VIP gear bags are internally padded to prevent scratches and dents and ensure the safe transportation of your fixtures. For enhanced flexibility, most cases feature adjustable and removable dividers as well as convenient side pockets to carry cables, clamps, tapes and other tools and accessories.



VIP Gear Bag CHS-BPK
Multipurpose backpack

For complete specifications, visit ChauvetDJ.eu



VIP Gear Bag CHS-30

- Fits**
COREpar 80 USB
COREpar 40 USB
SlimPAR Pro H USB
SlimPAR Pro Q USB
SlimPAR Pro W USB
SlimPAR H6 USB
SlimPAR Q6 USB
SlimPAR Q12 USB
SlimPAR T6 USB
SlimPAR T12 USB
COREpar UV USB
And More!



VIP Gear Bag CHS-40

- Fits**
Abyss USB
Gobo Zoom USB
Rotosphere Q3
Intimidator Barrel 305 IRC
Intimidator Scan 305 IRC
Kinta FX
Mini Kinta IRC
Swarm 4 FX
Swarm 5 FX
Swarm Wash FX
And More!



VIP Gear Bag CHS-X5X

- Fits**
Intimidator Spot 155
Intimidator Spot 255 IRC
Intimidator Spot 255 IRC White



VIP Gear Bag CHS-FR4

- Fits**
Freedom Par Hex-4
Freedom Par Tri-6
Freedom Par Quad-4 IP



VIP Gear Bag CHS-60

- Fits**
COLORband PIX USB
COLORband PIX-M USB
COLORband PIX IP
And More!



Clamps



CLP-03

Load Capacity:
20 kg



CLP-15

Load Capacity:
295 kg



CLP-15N

Load Capacity:
150 kg



CLP-06

Load Capacity:
100 kg



CLP-10

Load Capacity:
33.5 kg

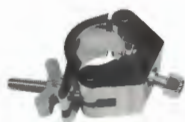
TRUSST Clamps



Swivel Coupler Lockable

CTC-50SCL

Load Capacity:
750 kg



Half-Coupler

CTC-50HC

Load Capacity:
750 kg



35 mm Truss Clamp

CLP-35HC

Load Capacity:
75 kg
Fits : Goal Post Kit & Arch Kits



Gripper Clamp

CTC-50G

Load Capacity:
250 kg)



Narrow Half-Coupler

CTC-50HCN

Load Capacity:
750 kg