

# BrightSign®

THE GLOBAL MARKET LEADER IN DIGITAL SIGNAGE PLAYERS

# EVERYTHING YOU NEED FOR SOPHISTICATED DIGITAL SIGNAGE

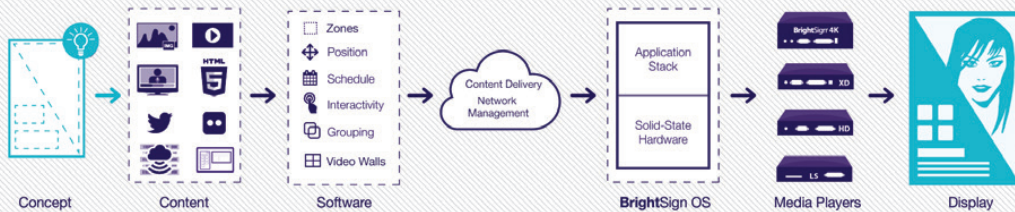
## Powerful Performance And Reliability

Designed exclusively for digital signage, BrightSign's slim OS delivers superior signage capabilities and exceptional 4K and Full HD video quality with a solid-state platform you can depend on. This PC-class solution delivers the absolute highest standard of reliability and affordability without the PC hassels. Plus, our green, energy-efficient device consumes less power than a PC to help keep operating costs down.



## State-of-the-Art Technology

BrightSign offers True 4K and Full HD playback, 4K upscaling, dual video decoding, PoE+, HTML5, Live TV, live feeds, video wall synchronization, IP streaming, Sign Preview, Remote Snapshot, and a wide array of interactive options. Bypass the digital signage learning curve completely with BrightSign's abundant, easy-to-use features and robust presentation creation tools for building multi-screen video walls, multi-zone screen layouts and more. Hook your audience with dynamic content integration and engaging interactive controls.



## End-point or Everything Between Content and Display

BrightSign players can act as end-points for market-leading CMS systems. BrightSign also offers an all-inclusive solution with free BrightAuthor software for creating and publishing presentations using an intuitive drag and drop interface. All models can be networked and include free networking solutions as well as options for measurement and feedback reports, content management and network administration tools. With a solution for everything in the digital signage ecosystem between content and display, BrightSign offers the best-equipped and most reliable signage solution on the market today.

# EXCEPTIONAL CAPABILITIES. INFINITE POSSIBILITIES.



## Powerful Video Engine

Advanced video engine with superior scaling technology and uncompromised decoding power to play stellar 1080p60 video, native 4K video, or even two videos simultaneously.



## True 4K Playback

BrightSign 4K plays H.265-encoded 4K video files at 3840x2160 resolution via HDMI 2.0 at 60 frames per second with 10-bit color depth.



## 4K Upscaling

Superior scaling technology provides upscaling of 1080p content to sharp 4K resolution.



## Live TV

Bring Live TV to your signage (even HDCP-protected content) via HDMI In with BrightSign XD and 4K players.



## HTML5

A hardware-accelerated HTML5 rendering engine delivers flawless playback of full screen HTML and even modular HTML5 assets layered together with high-bandwidth HD or 4K video.



## Power over Ethernet

Use Power over Ethernet+ (Type 2) to power your XD & 4K players.



## Remote Snapshot

Monitor your remote displays by viewing snapshot images of your running presentations via the BrightSign Network or via local networking and the BrightSign App.



## Digital Sound

Add crystal clear audio to your presentations via S/PDIF output for pure digital surround sound.



## BrightWall™

Easily create video walls using this powerful drag-and-drop BrightAuthor tool that uses a common clock to achieve frame-accurate synchronization.



## Zones

Playback multiple content types and multiple videos on a single screen using zones – even play video and audio playlists independently from a single player.



### **IP Streaming**

Supports buffered playback of Full HD videos, MJPEG and audio streams in all common formats: HLS, UDP/RTP/RTSP, HTTP, SHOUTcast, etc.



### **IP Streaming Server**

Serve video streams from BrightSign XD or BrightSign 4K players to devices on the same local area network.



### **Interactivity**

Trigger playback from virtually any type of interactive device including barcode scanners, motion sensors, RFID, GPIO, serial, IR, USB button controls, touch screens, mice and much more.



### **UDP Control**

Interact with signage via mobile devices, deliver emergency messaging, integrate with databases, show controllers, etc.



### **Live Feeds**

Instantly display updated content and live feeds without republishing the presentation using Live Data, Live Media, MRSS, Twitter, Flickr feeds and more.



### **Geo-Fencing**

Play content targeted to the current location of your moving digital signage using a USB GPS dongle.



### **BrightSign App**

Easily update messaging and interact with locally networked signage using your iPad or iPhone. Change user variables and trigger UDP events for instant signage updates.



### **Sign Preview**

Get a sneak peek of how your signage will display by viewing your presentation playback in BrightAuthor before publishing to your device.



### **BrightPlates™**

An online template-based sign creation service for turnkey deployment of signage presentations and delivery of updates to networked BrightSign units. Select from our template collection or connect with content partners to craft your own look.



### **Networking**

All BrightSign players support basic, free networking to update content remotely, as well as the option to utilize the secure, scalable cloud-based BrightSign Network service to update, serve, monitor and manage your network of digital signs.

# BRIGHTSIGN 4K

STATE-OF-THE-ART TECHNOLOGY.  
TRUE 4K PLAYBACK.

BrightSign 4K delivers unsurpassed performance with our fastest HTML and graphics engine and the most powerful CPU. This state-of-the-art technology for leading-edge digital signage installations includes playback of H.265-encoded 4K content at 60 frames per second and 10-bit color depth via HDMI 2.0.



## BRIGHTSIGN 4K242

### Networked Basic Interactive Player

Offers the most powerful video engine capable of dual decoding of one 4K and one Full HD video simultaneously, abundant content support including our fastest HTML5 engine, PoE+ (Type 2), networking and interactivity via UDP and GPIO.



## BRIGHTSIGN 4K1042

### Networked Multi-Control Interactive Player

All the features of the 4K242 plus S/PDIF output for pure digital surround sound audio and additional interactive controls including USB and serial.



## BRIGHTSIGN 4K1142

### Networked Multi-Control Interactive and Live TV Player

Includes all the features BrightSign 4K offers, plus 4K Live TV playback via the HDMI 2.0 input to play content from any broadcast channel – even protected HDCP content.



# BRIGHTSIGN XD

WIN BIG WITH BRIGHTSIGN XD.  
FASTER HTML5 ENGINE AND POE+.

State-of-the-art technology includes an advanced video decoding engine with superior scaling technology that is capable of decoding two 1080p60 videos simultaneously. All models are network-enabled and equipped with Power over Ethernet (PoE+). A hardware-accelerated HTML5 rendering engine enables flawless playback of multiple modular HTML5 assets, which can be layered along with Full HD video playback. BrightSign XD1132 brings Live TV to your signage via HDMI In, including HDCP-protected content.



## BRIGHTSIGN XD232

### Networked Interactive Player

Powerful video engine capable of dual Full HD 1080p60 video decoding and simultaneous content playback from local, networked and streaming sources, PoE+ and abundant content support with a faster graphics and HTML5 engine, as well as GPIO and UDP interactivity with support for the BrightSign App and BrightWall™ video wall synchronization.

## BRIGHTSIGN XD1032

### Networked Multi-Control Interactive Player

All the features of the XD232, plus S/PDIF output for pure digital and surround sound audio, and a diverse range of interactive controls such as GPIO, serial, USB and UDP for engaging interactive displays.

## BRIGHTSIGN XD1132

### Networked Multi-Control Interactive and Live TV Player

Includes all the features BrightSign XD offers, plus Live TV playback via HDMI In — even HDCP-protected content.

# BRIGHTSIGN HD

**AN UPDATED CLASSIC.  
NOW WITH HTML5 AND 1080p60 DECODE.**

The new BrightSign HD models are updated with advanced technology that delivers powerful performance at a very affordable cost. Customers enjoy a hardware-accelerated HTML5 engine and 1080p60 decode along with BrightSign's highly reliable media-handling platform and signature ease of use. BrightSign HD models support robust interactive controls and dynamic live content features for a wide range of applications from stand-alone displays to networked solutions with engaging interactivity.



**BRIGHTSIGN HD222**  
**Networked Interactive Player**

Enjoy flawless Full HD 1080p60 single video decoding, HTML5 support and simultaneous content playback from local, networked and streaming sources. Also supports interactivity via GPIO/UDP controls, BrightWall™ and Remote Snapshot.



**BRIGHTSIGN HD1022**  
**Networked Multi-Control  
Interactive Player**

All the features of the HD222 plus additional interactive options via USB 2.0 and serial to fully engage your audience.





# BRIGHTSIGN LS

**SIGNATURE BRIGHTSIGN RELIABILITY.  
AFFORDABLE, SMALL AND FULLY FEATURED.**

BrightSign introduces a low cost and fully featured commercial-grade player providing a far superior alternative to the consumer devices sometimes chosen for price-sensitive installations. Based on the award-winning BrightSign HD platform, BrightSign LS delivers signature reliability and affordability, while packing a robust feature set into a very small form-factor digital signage media player and commercial audio device.



## **BRIGHTSIGN LS322** **Commercial Audio Distribution**

An affordable, fully featured, compact commercial audio device with S/PDIF digital audio plus GPIO and USB interactivity.



## **BRIGHTSIGN LS422** **Entry Level Media Player**

The small form, commercial-grade BrightSign LS422 is fully featured to run circles around the competition. Network connected and featuring 1080p30 video playback via HDMI, USB 2.0 and GPIO interactivity, as well as S/PDIF audio out, this model is perfect for simple streaming applications and large deployments of common content.



# FREE BRIGHTAUTHOR SOFTWARE

## EASY CREATION, PUBLISHING & MANAGEMENT OF PRESENTATIONS

BrightSign's free BrightAuthor PC application takes the guesswork out of creating, previewing, publishing and managing presentations. It offers complete access to all BrightSign features and functionality and provides an intuitive interface and set of tools to implement them into your presentations.

### Build

Enjoy an intuitive drag and drop method and visual-based tools to build presentations with ease.

- Choose a type of playlist for content playback: looping media, interactive or dynamic playlists.
- Drag and drop content into your playlist: video, images, audio, HTML5, IP streams, live feeds, Live TV, Live Text, and more.
- Apply interactive events to trigger content playback, including screen touches, button pushes, sensed motion, UDP commands, barcode scans and more.
- Use BrightWall™ to easily create video wall presentations across multiple displays.



### Preview

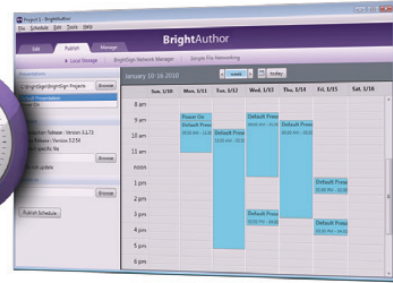
- Use the Sign Preview function to preview your presentation in BrightAuthor before publishing.
- Speed up presentation authoring by reviewing the look of your signage while you build it.



## Publish

Create a complete presentation packet that's ready to distribute and playback on BrightSign devices.

- Intuitive calendar scheduling and day-parting tool to set your presentation's playback schedule.
- Automatically builds and packages content, playlists and controls to ensure a flawless presentation.
- Effortless distribution of presentations to memory cards or a network location.
- Publish once, yet update often. Dynamic Playlists let you independently refresh a set of content without republishing the entire presentation.



## Network

Access your cloud-based BrightSign Network account to distribute, manage and monitor your presentations, networked units and content library.

- Secure logon automatically configures access to network account capabilities based on user assigned permissions.
- Conveniently monitor and manage the activity and status of players remotely.
- Easily distribute presentations across a multitude of players and network groups.
- Remotely host and manage your content library.



# BRIGHTSIGN NETWORKING SOLUTIONS

## BRIGHTSIGN NETWORK

BrightSign Network is an affordable, secure and scalable cloud-based digital signage network service. It delivers the complete infrastructure to serve, manage and support your digital signage network and frees you from the complexities of hosting and maintaining your own network. BrightSign Network provides you with the tools and interface to:

- Remotely and securely update content, firmware, presentations and schedules.
- Divide players into groups for ease of management.
- Monitor the activity and status of displays using Remote Snapshot.
- Perform network administrator functions.
- Assign user roles and permissions for conditional access.
- Access the BrightSign Network via the desktop-based BrightAuthor software and the browser-based BrightSign Network Web UI.
- Includes BrightPlates™ service.



## BRIGHTSIGN NETWORK ENTERPRISE EDITION

Created for organizations that must ensure the security of their data by maintaining their own private network, this packaged version of the BrightSign Network is available to qualified customers.

- Host your own network to manage BrightSign units.
- Manage your network within the security of your own server and firewall.
- Use all the features of BrightSign Network.

*Recommended for large networks with special hosting requirements, and a dedicated IT staff with advanced skills.*

## BRIGHTPLATES™

An online template-based sign creation service for turnkey deployment of signage presentations and delivery of updates to networked BrightSign units. Select from our template collection or connect with content partners to craft your own look.

- Cloud-based sign creation web service accessible from any PC or Mac.
- Ready to use templates for a variety of verticals: menu boards, education, retail & corporate.
- Customizable to match your brand.
- Deliver finished presentations and content updates to networked BrightSign units on your BrightPlates account.
- Ideal for small networks using single-player publishing.
- Connect with content designers to create, upload and deploy original HTML templates.
- Option to upgrade to a BrightSign Network account, which offers publishing to network groups, scheduling, and other network management features.



## FREE NETWORKING SOLUTIONS

Our free networking solutions are ideal for managing a small number of players in basic, low maintenance situations where simplicity is key.

### Local Network Publishing

- Distribute presentations to BrightSign units through a local network.
- Convenient for managing a small number of players in a single area.

### Simple File Networking

- Distribute presentations to BrightSign units through a web folder accessible via http.
- Convenient for managing a small number of players beyond the limited area of a local network.

## PARTNER NETWORKING SOLUTIONS

BrightSign has integrated with many market-leading digital signage software providers. See our website for details or ask your salesperson for more information. New integration work and future opportunities are always welcome.

# BRIGHTSIGN LS/HD/XD/4K COMPARISON TABLE

| MODEL   | LS322       | LS422      | HD222                      | HD1022     | XD232           | XD1032   | XD1132          | 4K242            | 4K1042              | 4K1142                   |
|---|-------------|------------|----------------------------|------------|-----------------|--|-----------------|------------------|---------------------|--------------------------|
| <b>VIDEO ENGINE DECODER</b>   |             |            |                            |            |                 |  |                 |                  |                     |                          |
| Single 1080p30 video decoding   |             | X          | X                          | X          | X               | X  | X               | X                | X                   | X                        |
| Single 1080p60 video decoding   |             |            | X                          | X          | X               | X  | X               | X                | X                   | X                        |
| Dual 1080@60p decoding  |             |            |                            |            | X               | X  | X               | X                | X                   | X                        |
| Dual video decode of one 4Kp60 & one 1080p60 video  |             |            |                            |            |                 |  |                 | X                | X                   | X                        |
| <b>MEDIA FORMATS</b>  |             |            |                            |            |                 |  |                 |                  |                     |                          |
| Video Codecs: MPEG-1, MPEG-2, H.264, WMV  |             | X          | X                          | X          | X               | X  | X               | X                | X                   | X                        |
| H.265 video codec for 4K content  |             |            |                            |            |                 |  |                 | X                | X                   | X                        |
| Video Containers: MPEG-2 transport and program streams, AVCHD/BDVA, ASF, MP4, MOV   |             | X          | X                          | X          | X               | X  | X               | X                | X                   | X                        |
| 3D capabilities with side-by-side and top-over-bottom support   |             |            | X                          | X          | X               | X  | X               | X                | X                   | X                        |
| Images: BMP, JPEG, PNG  |             | X          | X                          | X          | X               | X  | X               | X                | X                   | X                        |
| Audio: MP2, MP3, AAC, and WAV (AC3 is passed through)   | X           | X          | X                          | X          | X               | X  | X               | X                | X                   | X                        |
| HTML5 content support   |             |            | Good                       | Good       | Better          | Better   | Better          | Best             | Best                | Best                     |
| <b>DISPLAY RESOLUTIONS*</b>   |             |            |                            |            |                 |  |                 |                  |                     |                          |
| PAL/NTSC  |             | X          | X                          | X          | X               | X  | X               | X                | X                   | X                        |
| Native 4K resolutions: 3840x2160x24/25/30/50/60p  |             |            |                            |            |                 |  |                 | X                | X                   | X                        |
| Upscaling to: 3840x2160x24/25/29.97/30p   |             |            | X                          | X          | X               | X  | X               | X                | X                   | X                        |
| 1920x1080x24/25/29.92/30, 1360x768x60p, 1280x800x60p, 1280x768x60p, 1280x720x50/59.94/60p, 1024x768x60/75p, 800x600x60/75p, 720x576x50p, 720x480x59.94/60p, 640x480x60p |             | X          | X                          | X          | X               | X  | X               | X                | X                   | X                        |
| 1920x1080x50/59.94/60p, 1920x1080x50/59.94/60i, 1600x1200x60p, 1440x1050x60/75p, 1440x900x60/75p, 1280x1024x60/75p, 1280x960x60p, 1280x800x75p,                         |             |            | X                          | X          | X               | X  | X               | X                | X                   | X                        |
| <b>HARDWARE INTERFACES</b>  |             |            |                            |            |                 |  |                 |                  |                     |                          |
| Locking Power Connector   |             |            |                            |            | X               | X  | X               | X                | X                   | X                        |
| SD Slot for SDHC and SDXC; Storage via SDXC (up to 2TB)   | X           | X          | X                          | X          | X               | X  | X               | X                | X                   | X                        |
| Internal MicroSD Slot   |             |            |                            |            | X               | X  | X               | X                | X                   | X                        |
| mSATA   |             |            |                            |            |                 |  |                 | X                | X                   | X                        |
| USB High Speed Host Port  | X           | X          |                            | X          |                 | X (2 ports)  | X (2 ports)     |                  | X (1 port, USB 3.0) | X (2 USB 3.0; 1 USB 2.0) |
| GPIO Port (8 bi-directional)  | X           | X          | X                          | X          | X               | X  | X               | X                | X                   | X                        |
| RS-232 Serial Port  |             |            |                            | X          |                 | X  | X               |                  | X                   | X                        |
| 3.5mm IR Out  |             |            |                            |            | X               | X  | X               | X                | X                   | X                        |
| 3.5mm Analog Stereo Audio Out   | X           | X          | X                          | X          | X               | X  | X               | X                | X                   | X                        |
| S/PDIF Out  | X           | X          |                            |            |                 | X  | X               |                  | X                   | X                        |
| VGA Out (Component Video, Composite/S-Video)  |             |            | X                          | X          | X               | X  | X               |                  |                     |                          |
| HDMI Out  |             | X          | X                          | X          | X               | X  | X               | X (HDMI 2.0)     | X (HDMI 2.0)        | X (HDMI 2.0)             |
| HDMI Input  |             |            |                            |            |                 |  |                 | X (HDMI 1.4a)    |                     | X (HDMI 2.0)             |
| Ethernet  | X (10/100)  | X (10/100) | X (10/100)                 | X (10/100) | X (10/100) PoE+ | X (10/100) PoE+  | X (10/100) PoE+ | X (Gigabit) PoE+ | X (Gigabit) PoE+    | X (Gigabit) PoE+         |
| Status LEDs   | Power/Stats |            | Power, Error, Busy, Update |            |                 | Power, Error, Update, Network, Wi-Fi, Ethernet, Micro SD, SD |                 |                  |                     |                          |
| Reset Button  | X           | X          | X                          | X          | X               | X  | X               | X                | X                   | X                        |

\* Not all video modes are supported for both HDMI and VGA outputs



# BrightSign®

## THE BRIGHT SIDE OF SIGNAGE™



"BrightSign players were selected for their price, ease of use and product quality. Features that influenced CubeSmart to expand their signage solution to over 350 locations included the great touchscreen interface, high-quality content playback, and the networking features that simplified changing content."

*Kirk Vanderleest, Flixio Vice President, National Accounts*



"With its extremely reliable and feature-rich solid-state media players, BrightSign has reached a milestone in the digital signage industry by allowing system integrators to offer powerful and cost-effective digital sign solutions to retailers as never before."

*Michel Baronnier, CEO of TMM Communication*



"Using BrightSign as our menu board presentation has allowed for more flexibility in flavor changes, pricing updates and layout redesigns. We've also been able to completely eliminate daily specials menu board signage that was previously used to communicate seasonal offerings and other limited-time promotions."

*Simon Simonian, Argo Tea's Director of IT and one of its founders*

**16780 Lark Ave. Suite B, Los Gatos, CA 95032 • [www.brightsign.biz](http://www.brightsign.biz)  
408.852.9263 • +44.1223.911842 • [sales@brightsign.biz](mailto:sales@brightsign.biz)**

Copyright © 2015 by BrightSign, LLC. All rights reserved. BrightSign and the BrightSign logo are registered trademarks of BrightSign, LLC. Other brand and product names are trademarks or registered trademarks of their respective holders. DOC-11-15