

# NEW PRODUCTS 2018

ENGLISH



[www.claypaky.com](http://www.claypaky.com)



# AXCOR PROFILE 900

## THE POWERFUL LED PROFILE SPOT BY CLAYPAKY

AXCOR PROFILE 900 uses a white LED engine with high luminous efficiency, total power of nearly 900 Watts and luminous flux of 46,000lm (24,000 lumen output), associated to a system of dichroic filters to create the colors.

The Claypaky Axcor Profile 900 delivers the best in modern technology in every parameter: the characteristics of the white and colored light it produces, its ability to form perfectly sharp projections, and the precision micro-mechanics of its exclusive beam shaping system.

The Axcor Profile 900 features a CMY color mixing system with gradual-insertion filters, supported by a linear CTO correction device. The transition from one color to another is perfectly smooth. Six carefully selected professional-use color filters are available on a separate wheel: dark red, bright blue, green, golden amber, navy blue and a custom designed filter to enhance the CRI.

The range of effects is as wide as you can imagine. The Axcor Profile 900 provides all the effects found on the latest profile spotlights: six

interchangeable high-definition rotating gobos, an animation wheel, a four-facet rotating prism, a 16-bit electronic dimmer, two levels of variable frost filters - one "soft edge" and the other "flood" - to simulate a wash effect, and an iris with multiple built-in macros, which can be used as an effect in its own right.

Moreover, the Axcor Profile 900 is equipped with Claypaky's patented framing system, which works on four different focal planes and is the strong point of all Claypaky profile lights.

The zoom ranges from 7° to 40°, with very smooth, fluid movements and the focus is equipped with an autofocus system, which makes programming quicker. Its pan and tilt movements are wide and fast.

The Axcor Profile 900 is also remarkable for its silent operation, thanks to a carefully designed LED engine cooling system. This feature, together with its top quality light and color, makes the Axcor Profile 900 an excellent unit for use in theatres and television studios, where silence is a must.

Moreover, its impressive power, its wide range of visual and color effects make the Axcor Profile 900 the ideal solution for big live events and tours.

The standard version offers a CRI around 70. On request, the Axcor Profile 900 can be fitted with a high-CRI (at least 90) LED-engine, with a small decrease of output. Three modes of power operation are available: 900W, 600W and 400W.

A standard top hat has been introduced to eliminate even the slightest parasitic light emissions. The version without top hat is available as an option.

With the Axcor Profile 900, users looking for a high-output sophisticated spotlight can finally choose a LED light source instead of a traditional lamp, without any sacrifices in terms of light output, features and effects.



Axcor Profile 900  
with standard top-hat



Axcor Profile 900  
with optional top

## WEIGHT AND DIMENSIONS

(standard version)

■ 47.5 Kg (104.7 lbs)

mm (LxWxH): 424 x 442 x 874

inches (LxWxH): 16.7 x 17.4 x 34.4

## MAIN FEATURES

- High wattage moving head LED spotlight
- 880W white LED engine with custom lens solution:
  - Lumen: 46,000 (24,000 lumen output)
  - Colour temperature: 6,500 K
  - CRI: at least 70
- Optional 880W white LED engine:
  - Lumen: 34,000 (17,500 lumen output)
  - Color temperature: 5,600K
  - CRI: at least 90
- 7°- 40° linear zoom
- Focus tracking system
- Color system: 16-bit CMY + linear CTO + 6-color wheel
- 6 HD interchangeable gobos
- Animation wheel
- 4-facet rotating prism
- Variable "soft edge" frost
- Variable flood frost
- Iris with multiple macros (random, pulsing...)
- Electronic linear dimmer, 16 bit + electronic strobe
- Framing System, 4 focal planes and 90° rotation
- Three power operating modes: 900W, 600W, 400W
- Protocols/Functions: DMX, RDM, Web Server and ArtNet





# The Most Powerful LED Spot. Ever.



**AXCOR**  
PROFILE 900

Claypaky's Axcor Profile 900 is the apex of LED Spot development. Lighting designers can now access the most powerful, digitally advanced LED Profile Spot on the market, with no sacrifices in terms of light output, features and effects. Axcor Profile 900 signals a new dawn for creative possibility.

**AXCOR PROFILE 900: No Compromise. No Limits.**







## K-EYE HCR

EVERY COLOR NUANCES AND SHADES AT A CRI ALWAYS ABOVE 97

After the B-EYE, which revolutionized the world of LED wash lights with its extraordinary effects, Claypaky has now launched the K-EYE HCR, a LED wash light which provides total control over the quality of all forms of white or colored light.

The new HCR technology used in the K-EYE is an exclusive electronic platform developed by Claypaky and Osram to meet the needs of lighting designers who were not fully satisfied with the performance of LED devices in comparison with traditional lamps,

because of their incomplete color range, poor color rendering index and lack of consistency. All these limitations have been overcome in the K-EYE HCR, and it is finally possible to produce every color, every nuance and every shade with top quality.

The heart of the K-EYE HCR wash light is a LED light module consisting of six chips, each for a different color: besides the three "classic" basic red, green and blue colors, Claypaky added amber, cyan and lime. This exclusive Claypaky device provides a very wide

color range with extraordinary color spectrum coverage.

Along side the LED-light-source heart of this system is its brain: the brand new sophisticated software algorithm that controls its functions. The light

*"An LED wash light that delivers a new approach to accurate color rendering starting at chip level rather than manipulating existing sources."*

PLASA JUDGES – September 2017



produced by the K-EYE has a CRI that reaches values that have never been achieved before by LEDs: the typical CRI value is 97, up to 99. These values were previously only possible with traditional technology.

The K-EYE HCR family includes two moving-head models: the K-EYE K20 HCR with 37 LEDs and the K-EYE K10 HCR with 19. The range has recently been extended with two new static versions: K-EYE S20 HCR and K-EYE S10 HCR.

The light parameters are managed through different DMX modes and channels, six of which are dedicated to specific colors and another six are used for fine tuning: once a color has been selected, you can enrich the palette with an infinite number of shades. There are also two additional independent channels: one for linear color temperature adjustment from 2500K to 8000K, and another devoted to a wide selection of macros that make programming easy.

## MAIN FEATURES

- State-of-the-art LED moving head wash light
- Power consumption: 750VA (K20), 450VA (K10)
- Light sources: 37 LED modules (K20) 19 LED modules (K10)
- 6-color LED module: RGB + Amber + Cyan + Lime
- Rated LED module average lifetime: 50,000h
- Total lumen output: 11,000 lumen (K20); 5,500 lumen (K10)
- Typical CRI value: 97, up to 99
- 2500K-8000K color temperature

The K-EYE HCR fits an extremely high quality optical unit, with proprietary lenses that guarantee even light diffusion and eliminate stray reflections. The zoom ranges from 6° to 50°, with uniform light diffusion at any beam angle. A 16-bit resolution electronic dimmer means you can adjust light intensity in indiscernible infinitesimal steps. Different dimmer curves are available so you can adapt it to all stage requirements. The fixture may be controlled via DMX, RDM Protocol, Web Server or ArtNet.

All the K-EYE HCR versions have a perfectly homogeneous lumen output, thanks to a source calibration and color balancing procedure which is carried out on every single light during the production testing stage. Furthermore, the control algorithm of each fixture compensates for drifts in color due to ageing on the basis of a model stored in the unit's memory that simulates ideal behaviour during its working life. These sophisticated features together ensure color consistency both between one light and another, and over time.

Silent operation is a particular strong point of the K-EYE HCR: its heat sink is die-cast and has forced ventilation, which cools the unit with minimal noise.

The K-EYE HCR is suitable for use in all professional fields of application, where great brightness, a wide range of colors, and a high CRI are particularly appreciated. In fact, the K-EYE HCR can be used as a key light in theatres, television studios, showrooms, exhibitions, and fashion shows.

## WEIGHT AND DIMENSIONS

K-EYE K20 HCR

■ 22.5 Kg (49.6 lbs)

mm (LxWxH): 332 x 488 x 605

inches (LxWxH): 13.07 x 19.21 x 23.82

K-EYE K10 HCR

■ 16.5 Kg (36.38 lbs)

mm (LxWxH): 293 x 391 x 497

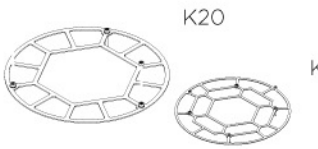
inches (LxWxH): 11.53 x 15.39 x 19.57

- correction
- Color control: RAW mode, HSL mode, RGB mode, CMY mode
- Dedicated color macro channel
- Software algorithm by Osram
- 6°- 50° linear zoom
- Electronic linear dimmer, 16 bit
- Optional frame for external gels and frost filters
- Optional top hat
- Protocols/Functions: DMX, RDM, Web Server and ArtNet
- Totally flicker free



## K-EYE HCR ACCESSORIES

Two accessories are available for additional control of the beam: an optional Top Hat, which is applied to the front lens and pulls out automatically together with the zoom (it works as frost/gel holder as well), and an optional outer frame for diffuser or gel filters.

Top Hat for K-EYE K20 HCR	optional	<b>code C21097</b>	
Top Hat for K-EYE K10 HCR	optional	<b>code C21096</b>	
Outer frame for diffuser / gel filters for K-EYE K20 HCR	optional	<b>code C21095</b>	
Outer frame for diffuser / gel filters for K-EYE K10 HCR	optional	<b>code C21094</b>	



### HCR STATIC VERSIONS: K-EYE S20 AND K-EYE S10

Static HCR versions, manually adjustable on 210° tilt, are also available. They are intended specifically for backdrop wash illumination, offering the same optical, electronic and lighting characteristics as the moving versions, including a motorised 6°-50° linear zoom.

	POWER CONSUMPTION	WEIGHT	DIMENSIONS
K-EYE S20 HCR	500VA	17 Kg (37.48 lbs)	mm (LxWxH): 479 x 300 x 474 inches (LxWxH): 18.86 x 11.81 x 18.66
K-EYE S10 HCR	300VA	12 Kg (26.45 lbs)	mm (LxWxH): 357 x 300 x 461 inches (LxWxH): 14.06 x 11.81 x 18.15



# EYES NEVER LIE.

CRI>97, UP TO 99



## K-EYE™

The K-EYE HCR provides total control over all forms of colored and white light. Its six-chip module LED source, combined with Claypaky's award-winning optical system and highly advanced control software, produces an amazing light quality, an extremely wide color range with excellent color spectrum coverage, and a CRI that reaches values that have never been achieved before.

The K-EYE HCR is a state-of-the-art LED wash which can be used as a key light in theatres, television studios, showrooms, exhibitions, and fashion shows, as well as at live events.

**K-EYE HCR. LIGHT QUALITY CERTIFIED BY YOUR EYE.**



K20 | K10 | S20 | S10

It's never been  
so easy to think big





# AXCOR 300



BEAM  
300

SPOT  
300

WASH  
300

The new Axcor 300 family of moving LED fixtures brings Claypaky's no-compromise quality and performance to the broad mid-market. Now, more designers than ever before can achieve their biggest ideas. With a physical size, power consumption and price-point that disguise their strength and creative potential, the Axcor 300 range enables a new world of expression in touring, events, TV, theatre and installed lighting markets. The Axcor Spot 300, Axcor Wash 300 and Axcor Beam 300 are available now!

**AXCOR 300: small body, big personality, mass appeal.**





## AXCOR 300

### SMALL BODY, BIG PERSONALITY, MASS APPEAL

The new AXCOR 300 family of moving LED fixtures brings Claypaky's no-compromise quality and performance to the broad mid-market.

The range consists of a spot light, a wash light and a beam light, all driven by a white LED engine with a rated power of up to 180 Watts. The quality of their effects, their construction, and their high light output derive from the high-end products Claypaky specializes in.

The **AXCOR SPOT 300** has 17 gobos on 2 wheels, including 7 high quality dichroic rotating gobos. Weighing just 20 Kg (44 lbs) and measuring a little over 500 mm (21.77 inches), this unit incorporates features that are not often found in models of this size, like

a rotating prism, a motorised iris, a soft edge filter, a 16-bit dimmer, and a 8-40° zoom.

The **AXCOR BEAM 300** has an even more compact body - less than 500mm (19.50 inches) - and is able to emit a super-concentrated solid beam with a beam angle as small as 2° and a surprising light output. The wealth and quality of its colors and aerial effects, its electronic focus and its 140 mm diameter front lens make the Axcor Beam 300 the ideal beam moving light in any application area, and the perfect replacement of a Claypaky Sharpy!

The **AXCOR WASH 300** has a 140mm front PC lens and linear 5.5° - 42° zoom. Producing colors is its speciality: it is fitted with all the components you

need to produce any shade of color you desire, with a light diffusion uniformity comparable to higher-end models.

The AXCOR 300 models boast cutting-edge electronic and software technology, with all the features that enable optimal fixture management and maintenance over time.

With a price-point, physical size and power consumption that disguise their strength and creative potential, the Axcor 300 range enables a new world of expression in touring, events, TV, theatre and installed lighting markets. Now, more designers than ever before can achieve their biggest ideas.

**AXCOR 300: it's never been so easy to think big!**

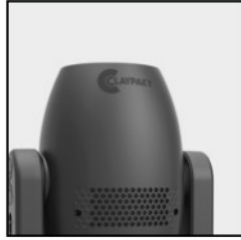
April 2018

Subject to change without notification



### AXCOR BEAM 300

- Source: 110W White LED engine (7600 K)
- Ø 140mm front lens
- Beam aperture: 2°
- Motorised focus lens
- One color wheel with 14 Colors
- One gobo wheel with 17 Gobos
- Rotating 8-facet Prism
- 16-bit Electronic Dimmer with 4 curves
- Electronic strobe@24 f/sec
- Extremely compact and lightweight
- Two DMX modes: 14ch / 16ch (Sharp mode)



### AXCOR SPOT 300

- Source: 180W White LED engine (7000 K)
- 8°-40° linear zoom
- Motorised focus lens
- CMY System
- One color wheel with 7 colors (including 1 CTO filter)
- One wheel with 7 rotating gobos
- One wheel with 10 fixed gobos
- Rotating 4-facet prism
- Mechanical Iris
- Frost filter
- 16-bit Electronic Dimmer with 4 curves
- Electronic strobe@24 f/sec
- Extremely compact and lightweight



### AXCOR WASH 300

- Source: 180W White LED engine (7000 K)
- Ø 140mm PC front lens
- 5.5°-42° Linear Zoom
- CMY system on wheels
- One color wheel with 9 colors (including 1 CTO filter)
- Rotating Ovaliser beam
- 16-bit Electronic Dimmer with 4 curves
- Electronic strobe@24 f/sec
- Extremely compact and lightweight

## WEIGHT AND DIMENSIONS

#### AXCOR BEAM 300

■ 17.6 Kg (38.8 lbs)  
mm (LxWxH): 345 x 268 x 492  
inch (LxWxH): 13.58 x 10.55 x 19.37

#### AXCOR SPOT 300

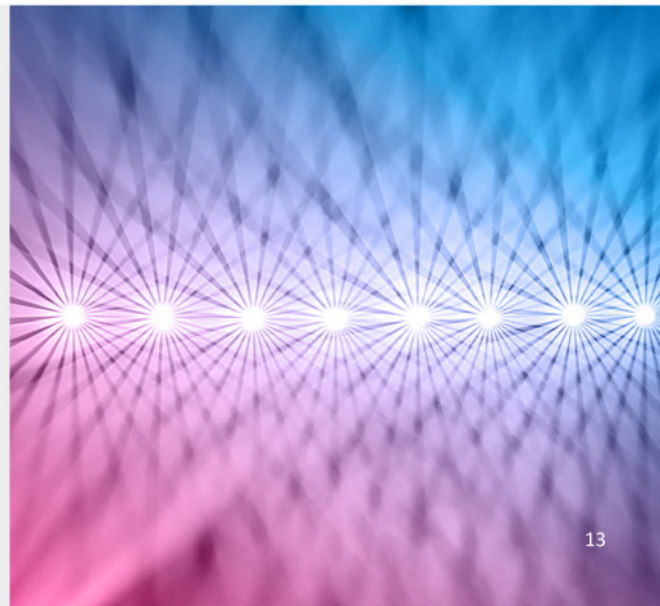
■ 20.2 Kg (44.53 lbs)  
mm (LxWxH): 350 x 276 x 553  
inch (LxWxH): 13.78 x 10.86 x 21.77

#### AXCOR WASH 300

■ 19.9 Kg (43.87 lbs)  
mm (LxWxH): 350 x 276 x 637  
inch (LxWxH): 13.78 x 10.86 x 25.08

## AXCOR 300 LED FAMILY

- Protocols: DMX512, RDM, WebServer and Art-Net
- Display: Graphic LCD backlit b/w display
- Neutrik XLR 5pin connectors
- RJ45 for software update
- Software Update by web server
- PowerCon IN/OUT
- Pan and Tilt lock
- Power cord of 1.5mt included (no plug)
- Max consistency of gobos and colors within the same products



# HEPIKOS



## HEPIKOS

THE HYBRID WASH/BEAM LIGHT THAT COMBINES LOW POWER CONSUMPTION WITH COLOR QUALITY, WITHOUT COMPROMISE

HEPIKOS is an innovative Claypaky hybrid light, which encloses all the most advanced optical, mechanical and electronic technology, characteristic of the most professional moving lights, in its highly compact body. The light is built around a new, extremely bright 440 W Osram lamp, and has a 5°- 40° zoom which provides a bright, uniform wash effect at maximum beam angle.

The color production system includes a CMY color mixing consisting of three wheels entirely devoted to producing

single colors; however it also features two color wheels, each with 8 filters carefully selected by Claypaky's R&D on the basis of suggestions received from lighting designers. Strict quality control on incoming materials assures near-zero tolerance rates on variations in the standard colors.

Hepikos is also an advanced beam moving light: thanks to its 185 mm diameter plano-convex front lens and its narrow 5° beam angle, it can produce a sharp, full-bodied beam, which may be

used for striking aerial effects.

Some devices have been specially designed for this product: a mechanical iris, which is able to alter the beam diameter in beam mode as desired to create columns of light of different sizes, right down to a pencil beam; a four-faced interchangeable rotating prism which modulates the visual effects by breaking the light up into several dynamic projections; a soft-edge frost filter which makes the edge of the projected light less sharp and produces

April 2018

Subject to change without notification





*Illustrative purpose only*

the wash effect typical of a washlight with Fresnel lens.

Hepikos is ultimately a hybrid beam/wash light, where both functions are optimised, rather than one weakening

the other. It is perfect for complementing the beam/spot effects produced by the Mythos and Mythos<sup>2</sup>.

You will love the Hepikos for its great performance, versatile optical unit,

abundance of colors, compact size and low operating power consumption in comparison to competing products with similar characteristics. It is a must-have unit for rental companies which already stock and appreciate the Mythos!

## SPECIFICATIONS

- 440W Osram discharge lamp
- Optical Unit with extremely luminous efficiency
- Large 185 mm diameter PC lens
- 5°- 40° electronic zoom
- Beam-Wash hybrid projector
- Interchangeable 4-facet prism
- CMY Color Mixing
- 2 wheels with 8 colors each
- Interchangeable 4-facet rotating prism
- Soft-edge frost
- High Precision iris
- Very Precise 0-100% dimmer and stop/strobe
- Very compact and Energy saving projector
- Art-Net / RDM

## WEIGHT AND DIMENSIONS

■ 29.3 Kg (64.6 lbs)

mm (LxWxH): 404 x 442 x 628

inches (LxWxH): 15.90 x 17.40 x 24.72



*Illustrative purpose only*

*Everybody today speaks about autonomous systems: autonomous cars, autonomous driving, autonomous robots... automation is all around us. But what about an autonomous follow spot? How would the ultimate follow spot be? A fixture that sees like a human eye, understands the stage and knows where the actors are, follows their movements seamlessly without us lifting a finger and doing magically what seems so obvious: always lighting the actor. Isn't this what we always wanted? So let's do it: Welcome to the world premiere of ZAC-EYE!*



# ZAC-EYE

## THE FUTURE THAT FOLLOWS

ZAC-EYE is the first stand-alone follow spot using artificial intelligence: by this highly innovative device, the movement of the fixtures is controlled automatically. This magic box is an external device that can be connected to any Claypaky moving lights via Ethernet. Its optical 3D sensor detects all objects on stage and a sophisticated algorithm

distinguishes human shapes from the rest of the environment

The actor can move freely on the scene and is detected by the 3D sensors: connected lights follow him in real time!

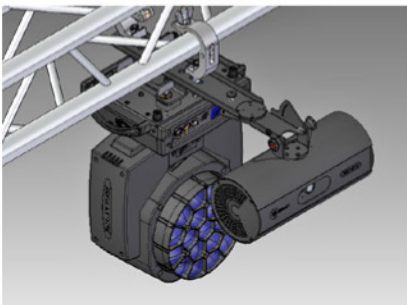
Zac-Eye works for a distance up to 15 meters and 60 degrees angle-of-view allows it to cover most presentation set-ups. As it works in 3D, it catches the elevation of the performer on stage, for instance while climbing steps. There is no operator involved. Everything is automatic.

Zac-Eye normally works as a stand-alone system but it can also be connected to a lighting console. All the automatic functions of Zac-Eye can be operated by the console and connected fixtures can always be used as normal moving lights.

The 3D sensors of Zac-Eye detect multiple human shapes on stage and distinguish one from the others. The actors on stage carry special Zac-Eye TAGS which have a unique identification.

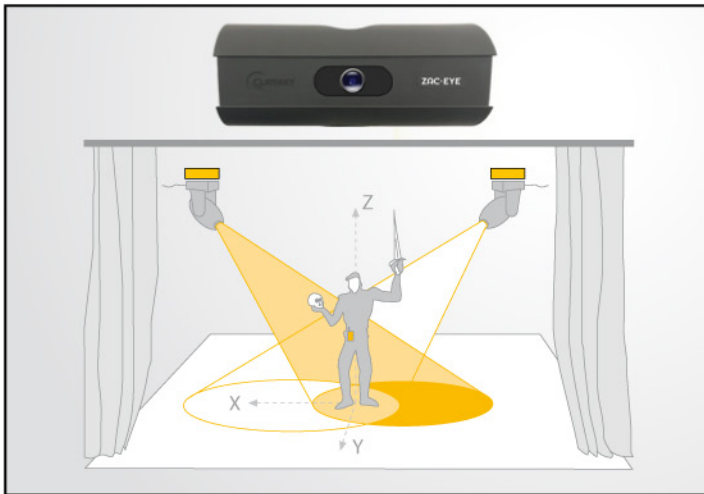
Four Zac-Eye devices can be grouped together in a system, thus creating the standard set, with two front lights and two back lights, normally needed for a presentation. This use-case covers most setting in conference halls, small theaters, cabarets, houses of worship, TV studios or any venues where there is no space or no budget for full-time human-operated followspots.

With Zac-Eye digitalization makes its entry in the show lighting industry, opening up new opportunities and new markets. Let us welcome the future with the new Claypaky Zac-Eye!

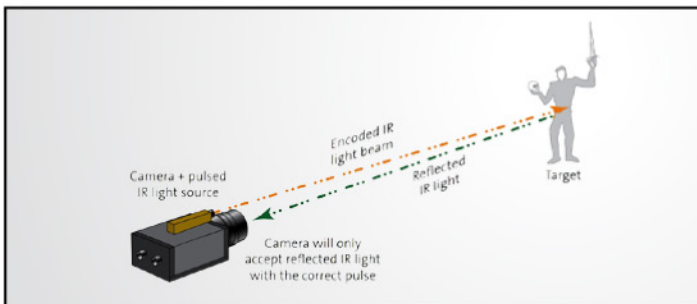


*Example of Zac-Eye connected to a Claypaky fixture mounted on truss*

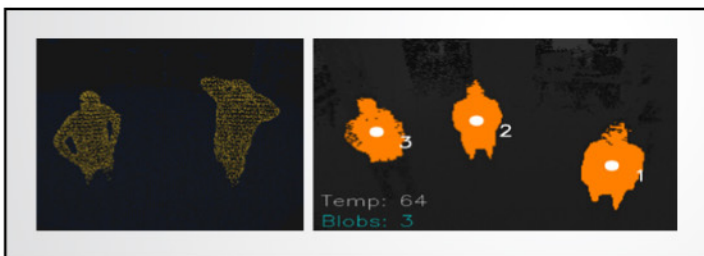




Zac-Eye works as an external device to all Claypaky luminaires



3D Optical Tracking: measuring the “time of flight” of a reflected infrared light and picturing the space as a 3D Pointcloud



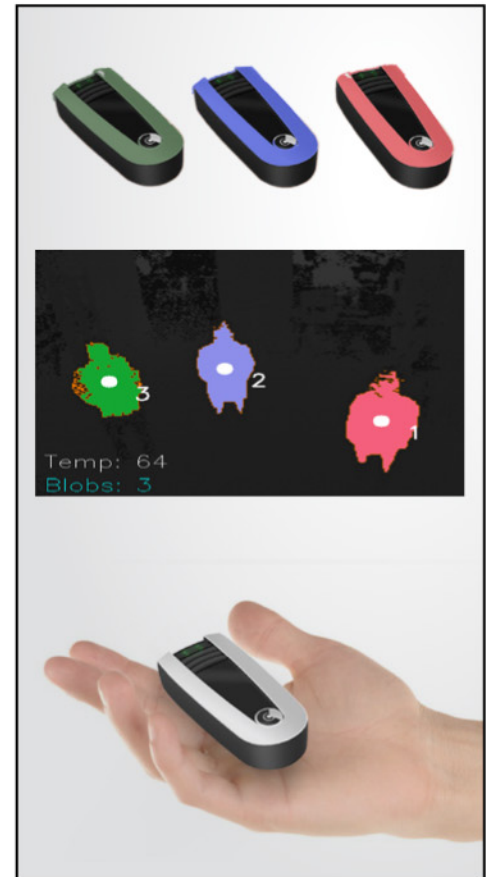
BLOB detection: detect of multiple actors using pattern recognition, finding human shapes and identify multiple target points

## TECHNICAL SPECIFICATIONS

- Tracking distance: maximum 15 m
- Angle of view: 60° horizontal, 45° vertical
- Actors: maximum 4
- Maximum 4 Zac-Eye boxes in one scene
- All indoor lighting conditions

## VENUE SIZES AND TYPES

- Small theatres
- Lecture halls
- Hotel conference rooms
- TV Studios
- Houses of worship
- University classrooms
- Cruise-ship theatres



Each performer carries a small Zac-Eye tag, a small radio transmitter which communicates with the Zac-Eye box to identify different persons on stage.

A maximum of 4 Zac-Eye tags can be used simultaneously.

With buttons on the Zac-Eye tag the show can be started and dimmer functions can be controlled.



# CLAYPAKY FIXTURES 2017

## ESSENTIAL CLAYPAKY FIXTURES WITH DISCHARGE LAMP



### SCENIUS UNICO

MULTIFUNCTIONAL WITH NO COMPROMISE

#### MAIN FEATURES

- Multifunctional light (spot-profile-beam-wash)
- 1400W-6500K Osram discharge lamp
- 180 mm Ø front lens
- 5°- 55° linear zoom and focus tracking system
- CMY System + Linear CTO + 7-color wheel
- Framing System operating on 4 focal planes
- Framing System rotation on 90°
- 6 HD rotating gobos + 4-facet Rotating Prism
- Graphic animation wheel
- 16 blades fast Iris
- Variable "soft edge" frost + Variable flood frost
- Very precise 0-100% dimmer + stop/strobe effect
- Light can be run at 1400W or 1200W
- Art-Net / RDM



### SCENIUS PROFILE

STATE-OF-THE-ART PROFILE SPOT FEATURING DISCHARGE LAMP AND VERY HIGH CRI

#### MAIN FEATURES

- 1400W-6500K Osram discharge lamp
- Very high CRI (at least 90)
- New optical reflector to ensure perfectly uniform beam projections
- Framing System operating on 4 focal planes
- Framing System rotation on 90°
- 7°-48° linear zoom and focus tracking system
- CMY System + Linear CTO + 7-color wheel
- 14 HD gobos (6 rotating + 8 fixed)
- 4-facet Rotating Prism
- 16 blades fast Iris
- Variable "soft edge" frost + Variable flood frost
- Very precise 0-100% dimmer + stop/strobe effect
- Light can be run at 1400W or 1200W
- Art-Net / RDM



## SCENIUS SPOT

STATE-OF-THE-ART SPOTLIGHT  
FEATURING DISCHARGE LAMP  
AND VERY HIGH CRI

### MAIN FEATURES

- 1400W-6500K Osram discharge lamp
- Very high CRI (at least 90)
- 7°-48° linear zoom and focus tracking system
- CMY System + Linear CTO + 7-color wheel
- 12 HD rotating gobos on 2 wheels
- Interchangeable Graphics Wheel
- 4-facet Rotating Prism
- 16 blades fast Iris
- Variable "soft edge" frost + Variable flood frost
- Very precise 0-100% dimmer + stop/strobe effect
- Light can be run at 1400W or 1200W
- Art-Net / RDM



## MYTHOS 2

NEW HEART, NEW LIFE FOR  
A LEGENDARY LUMINAIRE

### MAIN FEATURES

- Spot-Beam hybrid projector
- 440W Osram discharge lamp
- 160mm Ø front lens
- Electronic focusing and perfectly sharp aerial light beam
- 4°- 50° electronic zoom (Spotlight mode)
- 2.5° aperture and "pipe" effect (Beam mode)
- CMY color mixing + 14 color filters on three wheels
- 2 CTO filters and 1 CTB filter
- 6 HD rotating gobos
- Wheel with 18 fixed metal gobos
- 6 beam reducer filters on the gobo wheel
- Graphic animation wheel
- 2 indexable rotating prisms
- Frost filter for soft-edge projection
- Fast and extensive pan and tilt movements



# INDEX

<b>NEW</b> AXCOR PROFILE 900.....	3
<b>NEW</b> K-EYE HCR.....	6
<b>NEW</b> AXCOR 300.....	10
<b>NEW</b> HEPIKOS.....	14
<b>NEW</b> ZAC-EYE.....	16
CLAYPAKY FIXTURES 2017.....	18
CLAYPAKY IS CULTURE OF LIGHT.....	20
CLAYPAKY IS SOCIAL.....	21
CLAYPAKY ON TOUR.....	22



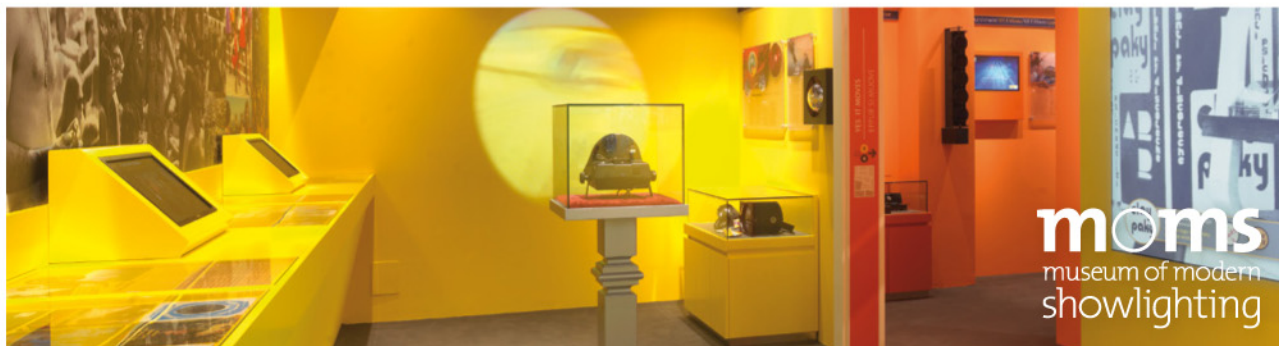
# CLAYPAKY IS... CULTURE OF LIGHT

## MoMS - Museum of Modern Showlighting

[www.moms-museum.org](http://www.moms-museum.org)

Opened in 2015 and housed at the Claypacky headquarters in Italy, the MoMS is the museum devoted to modern showlighting. It offers a multimedia, immersive experience, focusing on light as a tool aimed to stimulate an emotional

response. The museum covers all showlighting applications: concerts, musicals, television, discotheques and venues, theme parks, exhibitions, events, architectural installations.



## KOI - Knight of Illumination Awards

[www.knight-of-illumination.com](http://www.knight-of-illumination.com)

Sponsored and originally conceived by Claypacky, the annual "Knight of Illumination Awards" provide public recognition for the outstanding achievements of experts in Lighting Design, Video and Graphic Display who are working for UK productions.

In September 2017 more than 500 entertainment technology industry professionals gathered together to celebrate the 10th edition of this prestigious event, which has become year after year an unmissable event in the industry.



## CLAYPAKY - New R&D Department

[www.claypacky.com](http://www.claypacky.com)

The new Research & Development Centre was set up at the Claypacky site owing to the company's business expansion into new stage lighting markets. Claypacky and ADB, a firm specialized in theatre lighting, can therefore benefit from

a brand new 1000 sq.m. research centre, equipped with the most sophisticated equipment for designing, developing, and testing components and prototypes. The centre is the result of a joint project with the renowned architect Beppe Riboli.





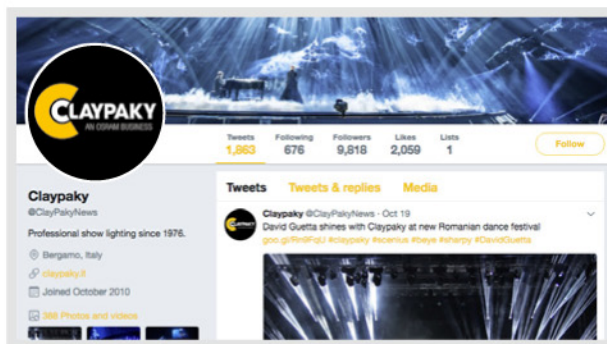
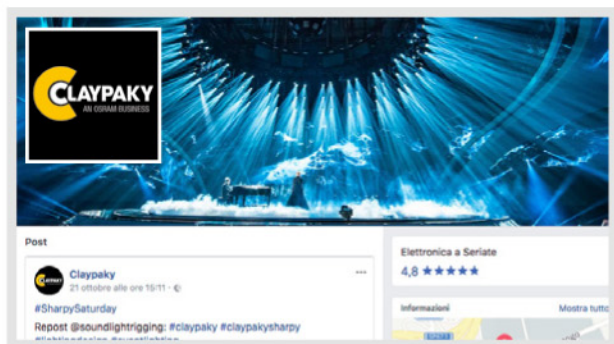
# CLAYPAKY IS... #SOCIAL



Follow Claypaky on:  
**Facebook**  
[www.facebook.com/clay.paky](http://www.facebook.com/clay.paky)



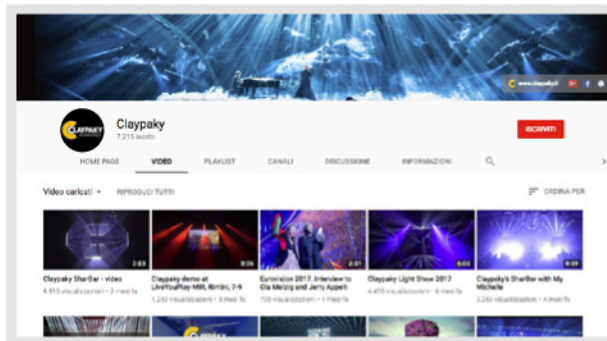
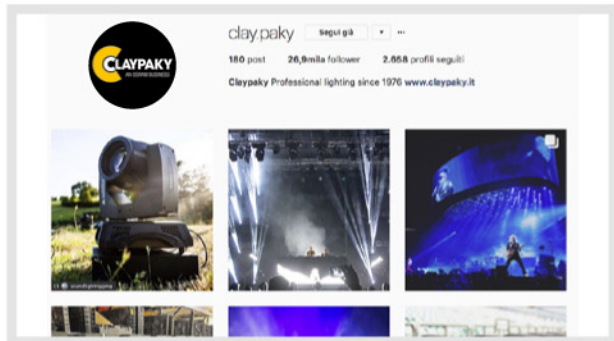
Follow Claypaky on:  
**Twitter**  
[@claypakynews](https://twitter.com/claypakynews)



Follow Claypaky on:  
**Instagram**  
[@clay.paky](https://www.instagram.com/clay.paky)



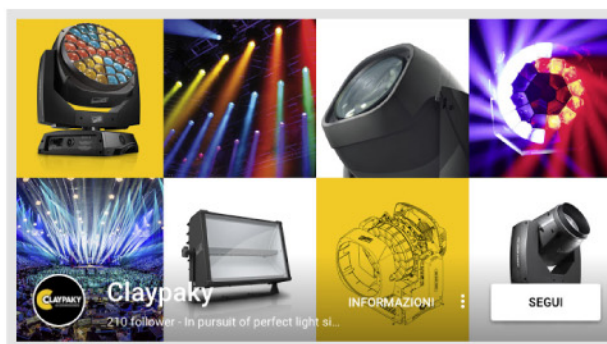
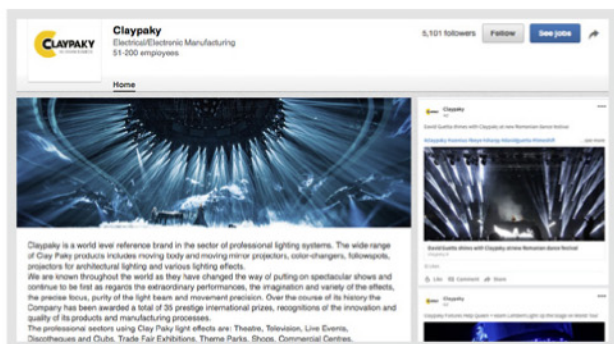
Follow Claypaky on:  
**YouTube**  
[www.youtube.com/user/ClayPakyTV](http://www.youtube.com/user/ClayPakyTV)



Follow Claypaky on:  
**LinkedIn**  
[www.linkedin.com/company/clay-paky](http://www.linkedin.com/company/clay-paky)



Follow Claypaky on:  
**Google+**  
[+ClayPakyTV](https://plus.google.com/+ClayPakyTV)







**Ed Sheeran - World Tour**

Fixtures used: Scenius Unico, Mythos 2  
Production Designer: Mark Cunliffe  
Lighting Director: Matt Jones



**Paul McCartney - World Tour**

Fixtures used: Scenius Unico, Scenius Profile, Sharpy  
LD: LeRoy Bennett



**Giudizio Universale, the Secrets of the Sistine Chapel**

Fixtures used: Scenius Unico, Axcor 300, K-Eye, SharBar, Odeon  
Show by Marco Balich - LD: Bruno Poet & Rob Halliday



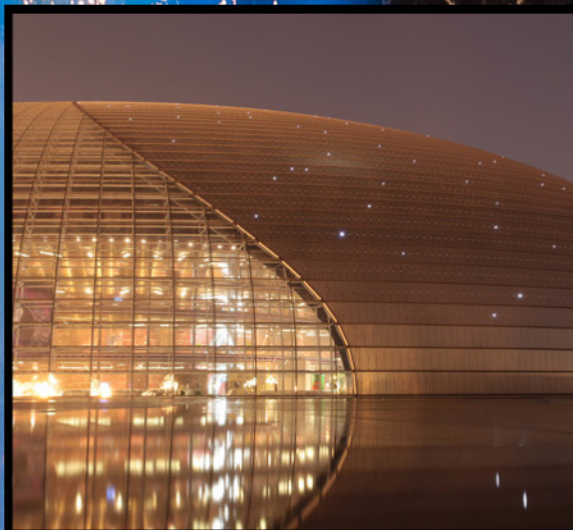
**Eurovision Song Contest.**

Fixtures used: Scenius Unico  
LD: Jerry Appelt





**Scorpions - World Tour**  
Fixtures used: Scenius Spot, B-Eye K20, Sharpy Wash 330  
LD: Manfred Nikitser



**National Centre for the Performing Arts - Beijing**  
Fixtures used: Scenius Profile  
LD: Hu Yaohui, Sha Xiaolan



**Queen + Adam Lambert - World Tour**  
Fixtures used: Scenius Unico, Mythos, Sharpy Wash  
LD: Rob Sinclair





CLAY PAKY S.p.A.  
I - 24068 Seriate (BG) - Via Pastrengo, 3/b  
Phone +39 035 654311 - [www.claypaky.com](http://www.claypaky.com)

Follow us on:

