

WIRELESS SOLUTION
MADE IN SWEDEN



W - D M X™
S E R I E S
C A T A L O G

2017 / 2018
WIRELESSDMX.COM
FB.COM / WIRELESSDMX

WIRELESS SOLUTION

Wireless Solution Sweden AB was founded in 2003 by top professionals from the lighting industry and wireless communication engineers. The company designs and produces W-DMX™, the twice award winning Wireless DMX system that is today the un-official standard for those that require the most dependable product available for transmitting lighting control data wirelessly, no matter the distance or location.

Wireless Solution's W-DMX™ product line makes large, creative, or technically complex installations possible through the wireless distribution of lighting control signals. Award winning reliability and one-button-to-go setup allow for quick installation of lighting fixtures, on-time completion of time-sensitive projects and faster, more efficient and less labor intensive load-in and load-out of rental equipment.

Wireless Solution's product range boasts indoor as well as IP65 rated outdoor models and can be used in even the most complex lighting systems today. The only manufacturer on the market carrying a whole range of wireless equipment and accessories, even the most complex turnkey systems can be specified and supplied in their entirety by Wireless Solution.

W-DMX™

W-DMX™ is a true 'plug and play' system for transmitting both DMX and RDM data wirelessly, incorporating advanced technology including Adaptive Frequency Hopping Spread Spectrum (AFHSS) to dynamically avoid other radio frequency users, built-in triple-band for better performance in even the toughest environments, and RDM support to keep on top of your lighting system without fail. On top of this with new functions like Data-Safe for error correction and Invisi-Wire.

Wireless Solution continues to invest tirelessly in R&D, and has a full gamut of products lined up for the future. Wireless Solution Sweden AB is, and will continue to be, the leader in Wireless lighting control worldwide. With over 50 OEM partners integrating W-DMX™ into a whole range of lighting products, and over 200,000 units manufactured, we are the true world leader in Wireless lighting control.

Wireless Solution Sweden AB works closely with major manufacturers, lighting designers and production companies to produce what the market wants and needs. Our products proudly carry a "Made in Sweden" stamp of approval, guaranteeing top-notch quality and reliability across the full range, in order not to compromise any job.

Are you wireless?





CONTENTS

02	Wireless Solution W-DMX™
03	Contents
04	W-DMX™ features
06	Our patents & trademarks Open houses, training & exhibitions
Products	
08	W-DMX™ BlackBox G5
10	W-DMX™ ProBox F-2500 G5
12	W-DMX™ WhiteBox G5
14	W-DMX™ Micro G5
16	W-DMX™ UglyBox G5
18	W-DMX™ BlueBox MK2
20	Indoor antennas
21	Outdoor antennas
23	Antenna adapters
24	Accessories
25	Dongle MK2
OEM	
26	OEM products
28	W-DMX™ OEM G5 Pico G5 / Micro G5 / Pro G5
29	W-DMX™ Nano G5 & COB G5
30	OEM partners
More general information	
32	Past, present and the future
34	Pros and cons of 2.4 GHz and 5 GHz

G5 FEATURES

With development of the intrinsic technology, Wireless Solution has added a wider voltage range on all radio cards, from 3.3 to 24v support. The new technology also features an increased sensitivity, allowing to co-exist in this tougher wireless world.

2.4
GHz

5.2
GHz

5.8
GHz

TRIPLE-BAND¹

Triple Band allows DMX and RDM data to be transmitted on the 2.4GHz and the less congested 5.2GHz and 5.8GHz bands at the same time.

Together with Adaptive Frequency Hopping – see below – W-DMX™ stands out as the most reliable and superior tool for wireless lighting control.

G3
Compatible

G4
Compatible

G3 & G4S COMPATIBLE

W-DMX™ G5 units are all compatible with the previous G3 and G4 products, meaning that our newer equipment slots right into your existing network.



PERSONAL CONNECTIVITY

Generation 5 allows users to connect their personal devices via Wi-Fi, and use third-party control apps like Luminair® to control their fixtures. Personal connectivity is great for smaller events where it doesn't demand a control desk to operate the show.



DOUBLE-UP!

In G5 you can double the amount of DMX universes transmitted – this is available on all ranges but the Micro. Each F-1 can now transmit up to two universes, and up to four universes on the F-2 series.

G4S/G5 FEATURES



DATA-SAFE

W-DMX™ data-safe technology protects your DMX and RDM data from corruption in the air. Using tough checks, and our patented method of error correction, W-DMX™ corrects any corrupted data before it gets to your lighting equipment, resulting in a flicker free show.



ADAPTIVE FREQUENCY HOPPING (AFHSS)

W-DMX™ adapts its radio transmission automatically depending on current radio traffic on both the 2.4GHz and 5 GHz bands, an industry first, ensuring transmission is conducted interference free not only for W-DMX™ systems, but for other radio systems in the vicinity as well.



INVISI-WIRE

W-DMX™ G5 recreates the DMX signal at the end of its wireless link so accurately that it is the industry's true wireless replacement for a wire.



RDM²

W-DMX™ supports RDM out of the box, allowing not only the W-DMX™ system to be configured by any available RDM controller, but also providing the controller with access to any RDM devices downstream of any compatible RDM enabled W-DMX™ receiver.



ONE-BUTTON-2-GO

All W-DMX™ features are fully automated, allowing the system to select the best operating characteristics automatically, all with a push of the single red function button on the front of every W-DMX™ unit.



MULTIPOINT TO MULTIPOINT

W-DMX™ G5 transmitters can connect as to as many W-DMX™ G5 receivers as you wish, effectively working like a big, invisible wireless DMX splitter. For more universes, just add more transmitters, resulting in a true multipoint to multipoint functionality.



ETHERNET

W-DMX™ supports a full range of Ethernet protocols associated with the lighting industry. Out of the box, it supports not only Art-Net I/II/III, Streaming ACN, but will be updateable in the future with more protocols.

¹) 5.2GHz and 5.8GHz is not available in all countries.

²) Covered by one or more claims of patent No 7,432,803, and/or by other patent applications and corresponding foreign patent applications pending.



“

**Without W-DMX™
I could not have
accomplished
many of the
projects...**

JOSHUA THATCHER LIGHTING CONTROL SOLUTIONS

Joshua Thatcher of Lighting Control Solutions is a lighting programmer by trade. His involvement in many large scale productions and the training program for IATSE Local 728 has lead him to be considered a specialist in his field for large control and networking solutions for the motion picture industry.

Some of his most current projects, Pirates of the Caribbean : On Stranger Tides, Super 8 and Star Trek, all relied heavily on the use of W-DMX."Being one of the first adopters of the W-DMX product I have always found it a reliable and valuable asset," he says.

"Without W-DMX I could not have accomplished many of the projects I have been lucky to be a part of over the past several years. Covering large areas quickly has been amazingly simple. And in many instances it has been impossible to run a cable. The interface also is very simple and straightforward to setup and monitor. Thanks Wireless Solution for creating this product just for me! It was just for me, right?"

OUR PATENTS & TRADEMARKS

Although Wireless Solution has been experiencing growth and success, the company is not one to rest on its laurels. In fact, the company has been investing in itself over the past few years to prepare for an even stronger future. The company is expanding its talented staff and continually working to seek patents and open doors to new opportunities around the globe.

Wireless Solution has invested heavily in a new approval to Russia, being the first company outside the country that can carry an import approval and an import license. Wireless Solution is also the first European wireless DMX company that has completed both ETL and C/ETL (similar to UL and C/UL). In addition, the company has been awarded a new patent for Wireless Lighting Control in China and Germany.

In the USA, it has been granted by the United States Patent and Trademark Office (USPTO) to Interlite AB (mother company and patent owner) an invention patent in regards to their new technology for wireless communication using adaptive frequency hopping (US 8,340,157). In accordance with the granted patent, it is possible to, in a more precise way, handle an adaptive wireless environment, including a plurality of wireless devices competing for the available bandwidth. What this patent means is that W-DMX™ can now protect this technology and avoid interference from all manufacturers as it can infringe on the patent.

In recognition of its financial stability, Wireless Solution was nominated the highest ranking of financial strength in 2016 from International Dun & Bradstreet with AAA, which accounts for less than 2% of companies in Sweden.

Wireless Solution plans to continue this upward trajectory. Its strong core in both people and financial position set the company up for a powerful future.



OPEN HOUSES, TRAINING AND EXHIBITIONS

At Wireless Solution, we go way beyond just shipping products. We reach out to our current and future clients in a variety of formats, including trade shows, seminars, a facebook page, and even award ceremonies to recognize visionaries in the field.

Join us for the next Swedish vodka and meatball party or check our facebook page to find out when the next Wireless University seminar or Open House will be held at a location near you.

We offer opportunities year round to get to know us and familiarize you with the latest in W-DMX™ technology.





“

Once again,
the W-DMX™
performed
flawlessly.

JASON MCKINNON, ELECTRIC AURA

The Vancouver-based team at Electric Aura Projects have been using W-DMX™ on high profile projects for years including the recent 100th anniversary of the Canadian Football League's Grey Cup Halftime show, featuring music legend Gordon Lightfoot, rock band Marianas Trench, pop star Carly Rae Jepsen, and finally Canada's own Justin Bieber.

Electric Aura used W-DMX™ on the Grey Cup in 2015, giving them confidence of its reliability.

Lighting Director Jason McKinnon explains,
"Once again, the W-DMX™ performed flawlessly."

W-DMX™ BLACKBOX G5

The W-DMX™ BlackBox series is an industry leader for Wireless DMX and RDM control, packed into a tough, roadworthy die-cast metal casing. As with all our top W-DMX™ technologies, the W-DMX™ BlackBox series is built for the true lighting savvy. The W-DMX™ BlackBox uses our redesigned radio card with Generation 5 software. It now supports Triple-Band: 2.4 GHz, 5.2 GHz and 5.8 GHz frequency bands. It also features an improved Adaptive Frequency Hopping technology, that automatically avoids interference created by other wireless networks, with an increased bit-rate that enhances its sensitivity and detects transient interference from W-LAN networks, wireless intercoms, stage automation systems and more. The BlackBox also includes our improved method of error correction called Data-Safe that fixes any corrupt data before it gets to your lighting equipment. There is an optional Wi-Fi and Ethernet functionality, allowing to connect a personal mobile device to the transmitters and control the rig wirelessly.

The F-Series of BlackBox are the most versatile and flexible units on the market, that you can change on the fly between transmitter and receiver - pure transceiver technology.

All BlackBox G5 units are backward compatible with W-DMX™ G3 and G4S units, protecting your investment in the W-DMX™ range.

A slot for the optional Ethernet or Wi-Fi PCB allows W-DMX™ BlackBox units to be enabled with Streaming ACN, Art-Net and other Ethernet based lighting protocol support, thus simplifying integration of the W-DMX™ BlackBox even into larger, more complex installations.

All Blackbox units come with automatic switching power supplies, meaning that no matter where you are in the world, the devices are ready to go. And W-DMX™ units can be supplied directly by a battery thanks to the Phoenix Gold 12V input, and over a network through PoE (Power over Ethernet), using the optional network card.

BlackBox units ship standard with a 3 dBi triple-band antenna, which provides up to an exceptional 500m of range (in 2.4 GHz). For links over greater distances, or for more complex projects, Wireless Solution provide a range of specific indoor and outdoor antennas that can be coupled through the N-Type connector in the front panel.

W-DMX™ BLACKBOX SERIES

Weight	1.2 Kg
Dimensions	235 x 150 x 45mm

F-1 G5

Article number	A40001G5
Operational modes	Transmitter/Receiver
Universes	1/2 ³
Protocols	DMX / RDM ¹ / ACN ² / Art-Net ² / WiFi ²

F-2 G5

Article number	A40005G5
Operational modes	Transmitter/Receiver/Repeater
Universes	2/4 ³ in transmitter/receiver mode. 1 in repeater mode
Protocols	DMX / RDM ¹ / ACN ² / Art-Net ² / WiFi ²

R-512 G5

Article number	A40102G5
Operational modes	Receiver
Universes	1
Protocols	DMX

1) Covered by one or more claims of patent No 7,432,803, and/or by other patent applications and corresponding foreign patent applications pending.

2) Optional

3) In double up mode





“

The use of W-DMX™ has helped a lot in minimizing the setup time and be more flexible.

Damir Smetko
HRT Broadcasting

W-DMX™ PROBOX F-2500 G5

The W-DMX™ ProBox F-2500 is our top of the line, 2 universe transmitter/receiver and 1 universe Repeater, all in a single box 19" Rack unit, with all the features from the previous two series built-in as standard. Built in a 1U case, the unit comes with ample connectors on the front and the back, and has built in support of Ethernet-based lighting protocols, including Art-Net and Streaming ACN. The ProBox F-2500 is designed for the large scale touring, rental and installation markets. It has an optional integration of Wi-Fi technology to enable Personal-Connectivity.

The W-DMX™ ProBox F-2500 now supports Triple-Band: 2.4 GHz, 5.2 GHz and 5.8 GHz frequency bands. It includes full RDM support, meaning the most complex installations, or even the ProBox F-2500 unit itself can be configured wirelessly. The ProBox F-2500 G5 units are backward compatible with W-DMX™ G3 and G4S units, protecting your investment in the W-DMX™ range.

It also features an improved Adaptive Frequency Hopping technology, that automatically avoids interference created by other wireless networks, with an increased bit-rate that enhances its sensitivity and detects transient interference from W-LAN networks, wireless intercoms, stage automation systems and more.

W-DMX™ PROBOX F-2500 G5

Article number	A40007G5
Operational modes	Transmitter/Receiver/Repeater
Universes	2/4 ³ in transmitter/Receiver mode. 1 in repeater mode
Protocols	DMX / RDM ¹ / Art-Net II/III / s/ACN / WiFi ²
Dimensions	19", 1U

1) Covered by one or more claims of patent No 7.432.803, and/or by other patent applications and corresponding foreign patent applications pending.

2) Optional

3) In double up mode

W-DMX™ ProBox F-2500 comes with an automatic switching power supply (90-260V) meeting all international standards, that ensures no matter where your rig goes, the ProBox F-2500 can follow. The unit also ships with two Triple-Band 3dBi antennas.

1) 5.2GHz and 5.8GHz is not available in all countries.



A large crowd of people is gathered at night for a concert. In the center, a massive circular screen displays a close-up of a woman's face with a surprised expression. Above the screen, numerous stage lights are visible, some of which are illuminating the scene. The overall atmosphere is dark and vibrant with stage lighting.

“

Neg Earth stock needs to work anywhere in the world and we have that confidence in W-DMX™..

**Dan Webb,
Neg Earth**

W-DMX™ WHITEBOX G5

The W-DMX™ WhiteBox series is our solution for architectural and entertainment projects that require the reliability and ease of use of W-DMX™ products, in an improved weatherproof IP-66 rated casing. All the functions are the same as the BlackBox Series with standard RDM and optional Ethernet and Wi-Fi Support to convert any protocol or control the rig wirelessly.

The series have been upgraded to work as a hybrid between architectural and entertainment, with a new M10 thread for hook clamps or couplers, a new safety wire locker, and an improved wall plate for wall mounting. It can also be customised in any RAL colour, to best fit in fixed installations. The W-DMX™ WhiteBox contains features to ensure top-notch reliability, including an improved Adaptive Frequency Hopping technology to dynamically avoid interference from other radios in the vicinity without worrying, as the system adapts to its surroundings in real time. It now supports Triple-Band: 2.4 GHz, 5.2 GHz and 5.8 GHz frequency bands, meaning ever more reliability and robustness in any environment.

This series also include our advance functions from the W-DMX™ G5: Data-Safe, with automatic error correction, and Invisi-Wire.



F-1 G5

Article number	A40002G5
Operational modes	Transmitter/Receiver
Universes	1/2³
Protocols	DMX / RDM¹ / ACN² / Art-Net² / WiFi²

F-2 G5

Article number	A40004G5
Operational modes	Transmitter/Receiver/Repeater
Universes	2/4³ in transmitter/receiver mode. 1 in repeater mode
Protocols	DMX / RDM¹ / ACN² / Art-Net² / WiFi²

1) Covered by one or more claims of patent No 7,432,803, and/or by other patent applications and corresponding foreign patent applications pending.

2) Optional

3) In double up mode

Built to be installed on the exteriors of buildings, large structures, or anywhere exposed to the elements, the WhiteBox series works tirelessly day in and day out, to transmit or receive DMX, RDM and Ethernet/Wi-Fi data around installations, from the outside of a building, over rivers and even across buildings. The units can even be powered by PoE (Power over Ethernet), using the optional network card.

With a range of IP-66 antennas available that have proven compatibility with the WhiteBox series, and on-site support services,

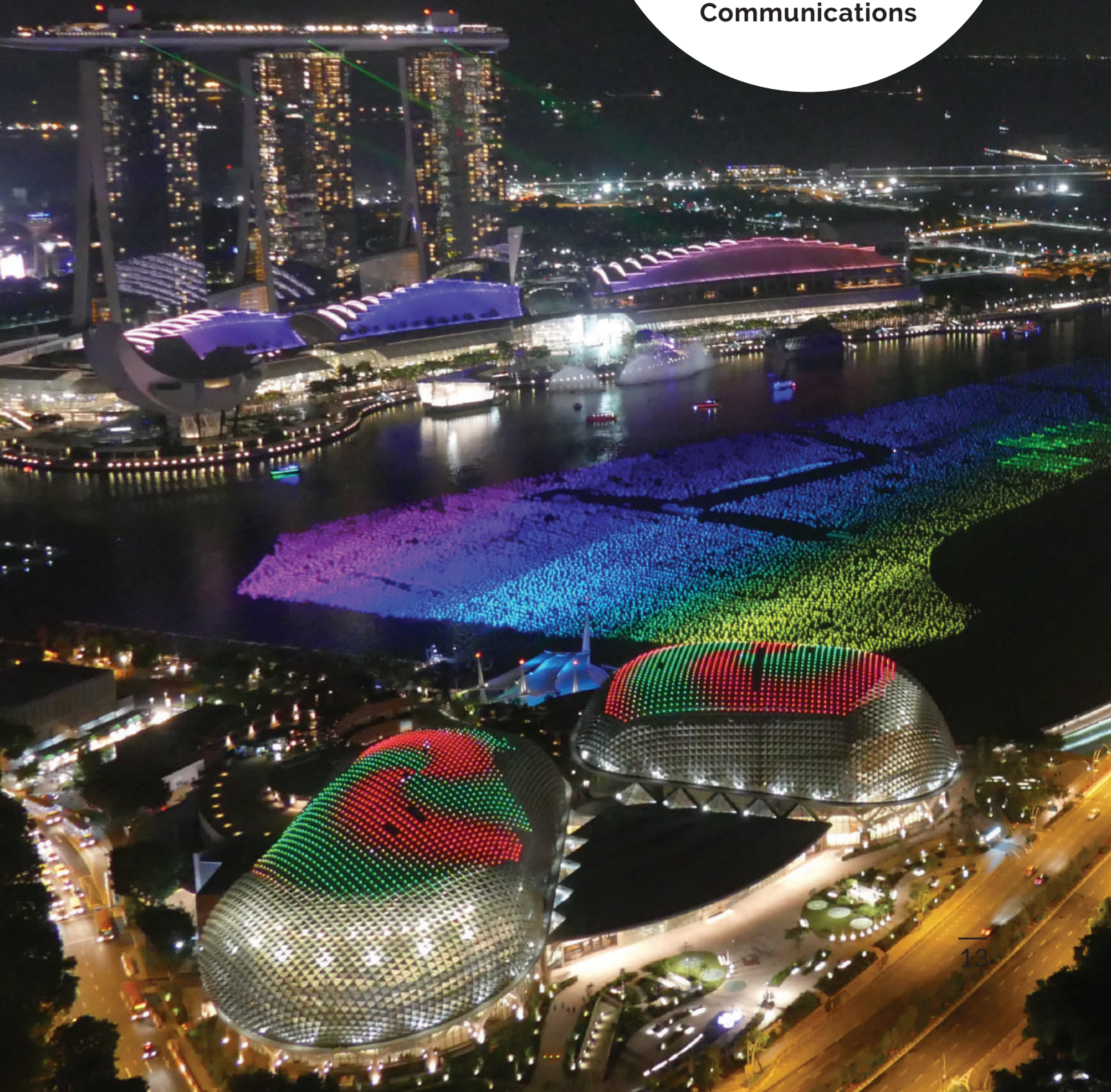
Wireless Solution can not only supply the whole range of Wireless equipment to an outdoor project, but also support to ensure that the installation is completed without any problems. Because our Generation 5 software is backward compatible, any existing installations can be expanded with ease.

5.2GHz and 5.8GHz is not available in all countries.

“

The plug-and-play approach of the W-DMX™ transceivers provided instant connectivity.

**Jorden Lee,
Showtech
Communications**



W-DMX™ MICRO G5

The Micro series are the most compact W-DMX™ products available on the market with DMX and support of RDM. Built into a slim-line casing, with mounting options for any conceivable location or to practically any type of structure encountered in the entertainment and architectural lighting business, the Micro series is perfect for smaller events, or where space is a problem, such as inside trucked scenery, set pieces or in difficult to reach corners. The Micro units are also suitable for smaller rental applications where the distance does not need to exceed 200-meter line-of-sight, and where fewer universes need to be transmitted wirelessly in one area. The Micro Series include functions like the improved Adaptive Frequency Hopping technology, Data-Safe and Invisi-Wire.

The new sleek design brings a lot of needed updates to keep up with today's demanding environments – besides including a more robust housing, the new products in the Micro series include a Kensington security slot to prevent getting stolen.

The Micro series comes with a battery compartment that accepts 4 standard rechargeable AAA batteries, and a micro USB port to power the unit. This redesign completely alters the user experience, taking W-DMX's products to a new generation of standardized connectors across all industries. Thanks to its new hardware design, the Micro Series have improved 20%

MICRO F-1 G5

Article number	A40006G5
Operational modes	Transmitter/Receiver
Universes	1
Protocols	DMX / RDM ¹

MICRO R-512 G5

Article number	A40100G5
Operational modes	Receiver
Universes	1
Protocols	DMX

1) Covered by one or more claims of patent No 7,432,803, and/or by other patent applications and corresponding foreign patent applications pending.

in signal reception, making them now the best wireless receiver in its segment.

The Micro series supports DMX/RDM through a standard 5 pin XLR connector, and a helpful display on the front of the unit conveys useful information at a glance. With our one-button-to-go technology, setting up a W-DMX™ system with Micro units is as simple as pushing a single red function button. And with compatibility with the whole W-DMX™ range, the W-DMX™ Micro series of products is at home in any lighting company inventory.



“

It's easy to understand why the Royal Opera House frequently draws on the use of Wireless Solution products!

**Jonathan Haynes,
White Light**

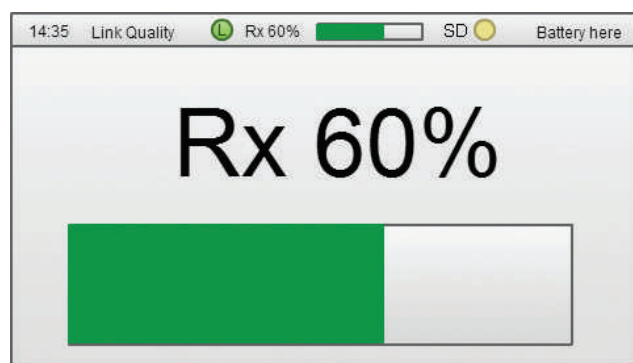


W-DMX™ UGLYBOX G5

The UglyBox is hailed as the 'rigger's best friend', an indispensable tool in the lighting designer or technician's arsenal. With the capability to receive W-DMX™ signals to check their signal strength, as well as the output of DMX channels, the W-DMX™ UglyBox is great for testing the limits of the W-DMX™ radio system and/or checking DMX data, in a portable, pocket sized device.

The UglyBox is great for checking if a system will work before installation, and checking DMX levels in a system. The W-DMX™ UglyBox can also be used to check W-DMX™ signal history, allowing the user to see quickly any transient problems in the system. The Uglybox runs on standard AA batteries and last over 8 hours.

- Single universe DMX tester
- Colour LCD screen
- W-DMX G5/G4S protocol in TX-mode.
- W-DMX G3/G4S/G5 protocol in RX-mode.
- Invisi-wire Technology
- Data-Safe Technology
- View received DMX channels on the LCD screen
- History View – view signal strength over time
- One-button-to-go support
- Improved Adaptive Frequency Hopping Radio
- Triple-Band 2.4GHz, 5.2 GHz and 5.8 GHz radio
- Compatible with all W-DMX™ OEM products



W-DMX™ UGLYBOX G5

Article number	A40302G5
Product type	Signal tester
Universes	1
Protocol	W-DMX





W-DMX™ BLUEBOX MK2

Fast, intuitive, beautifully easy to use...

The BlueBox RDM controller brings to the table user-friendly visual control of any next-generation, RDM enabled lighting rig. Built to work with any fixture, irrespective of manufacturer, the BlueBox RDM controller is the best way of configuring, monitoring and controlling moving heads, dimmers, gel scrollers and more.

Working with the BlueBox dongle, the BlueBox RDM controller software merges RDM control with DMX control from your favourite lighting desk, be it through DMX over Ethernet protocols, or standard 5-pin DMX.

Know what will happen, before it happens...

The BlueBox RDM controller has built in support for all the information you could ever need from your lighting rig. See parameters such as fan speeds, housing temperatures and lamp hours, to allow you to take corrective action on a small issue, before it becomes a big issue that could threaten your show.

The power of RDM combined with the power of this intuitive interface also allows for visual DMX patching of lighting fixtures, remote resets and DMX personality changes, and any manufacturer specific configuration.

Remote access improves productivity, especially with our DMX/RDM merging technology to allow lighting programmers to operate at the same time as DMX programmers, and improves safety, with less trips to height for corrective action in a lighting rig.

Features

- Fully featured RDM (ESTA E1.20) and DMX (ESTA E1.11) controller with the free BlueBox RDM controller software, compatible with all RDM capable equipment
- Art-Net to DMX, and DMX to Art-Net conversion (Art-Net 1 and 2 supported), and support for sACN
- RDM packet injection (for conventional RS-485 Systems), with conventional 5-pin DMX in and RDM out
- DMX controller mode (with Etherlight Browser)
- RDM 'loopback' mode for testing RDM functionality
- Field-updatable with future firmware updates – never goes obsolete

DMX and RDM

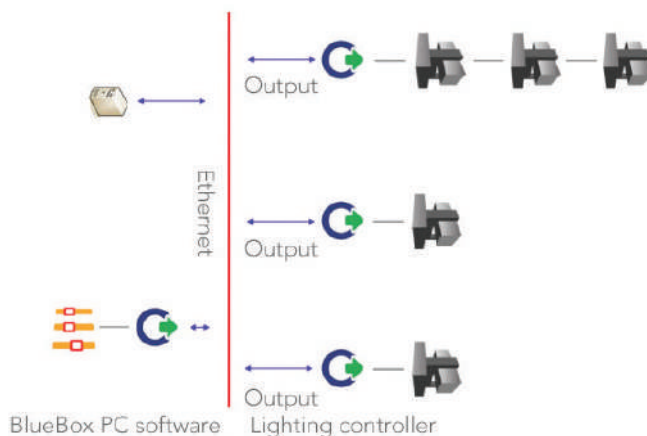
- All DMX processing is done on board the BlueBox Dongle, allowing for jitter-free DMX operation
- All RDM processing and discovery is done on-board the BlueBox Dongle, avoiding any timing issues and — allowing the system to scale from one PC.

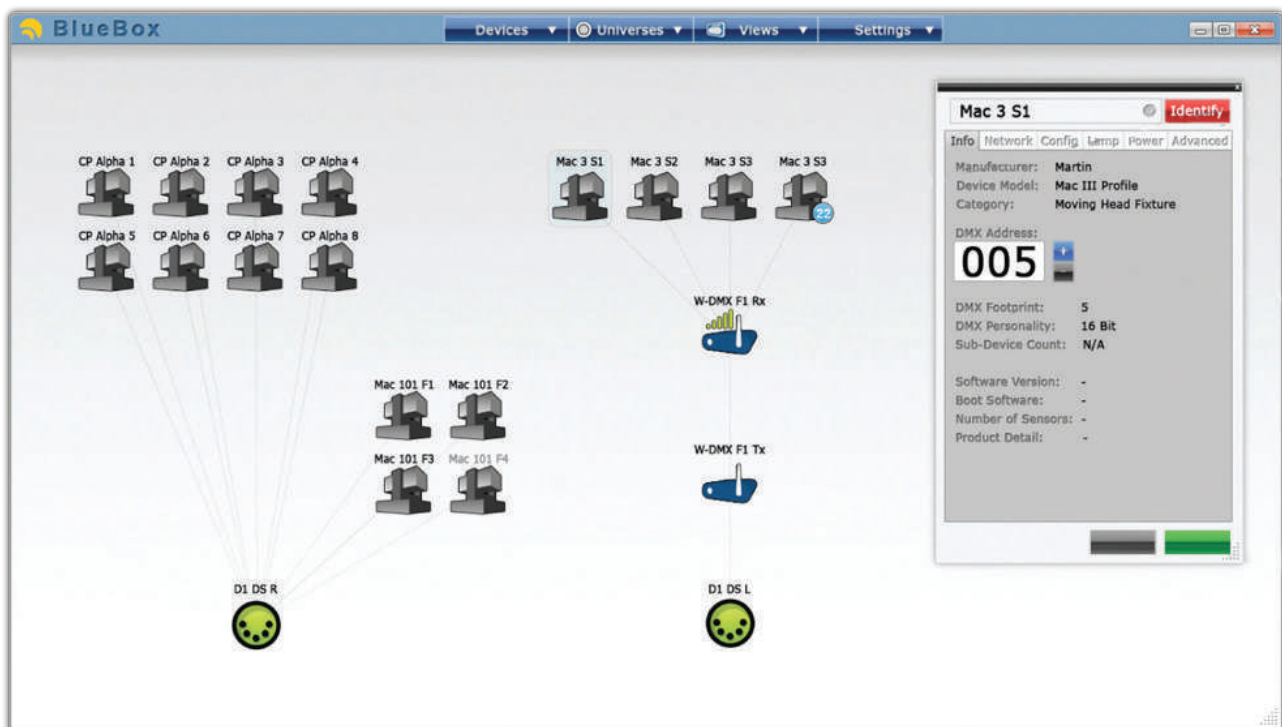
W-DMX™ BLUEBOX MK2

Article number	A40306G4MK2
Universes	2
Protocols	DMX / RDM

W-DMX BLUEBOX DONGLE

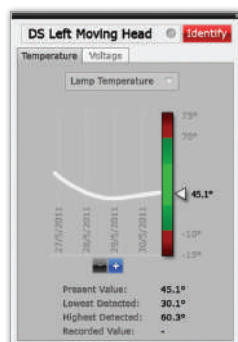
The BlueBox Dongle is our single universe physical ethernet gateway, designed for use as a DMX over Ethernet Gateway, or as an RDM packet injector into a conventional DMX signal. With a range of features, including support for the free RDM controller software (BlueBox RDM controller), it is suitable for use in both entertainment and architectural lighting settings, for DMX signal distribution and real-time lighting system monitoring and maintenance.



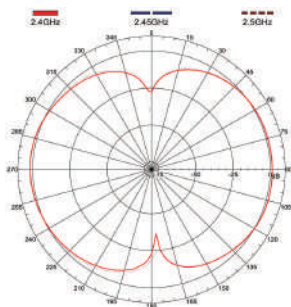


SOFTWARE

- Discovers and monitors any RDM-enabled fixture
- Does not interrupt DMX programming and control
- Consolidates view of all fixtures, over all DMX universes
- Easy to use, Drag and Drop Interface
- Windows-based software that works on any PC
- Free software updates for life - never goes obsolete and allows you to take advantage of future updates and improvements to RDM
- Designed to work with any RDM-enabled fixture, from any manufacturer
- Arrange all fixtures as they are laid out in your lighting rig, for easy identification and configuration
- Simple drag and drop interface that allows for easy to use, easy to understand management and configuration of a lighting rig
- Set-up DMX universes, with corresponding Art-Net or sACN settings, or just use the 'DMX Through' mode for use with standard lighting consoles.
- Software scales effortlessly with multiple DMX universes, and multiple RDM outputs, increasing performance of the system and scaling to even the largest of shows and installations
- See outstanding messages from fixtures, and identify small issues on a lighting rig before they become big problems.
- Label and identify fixtures in the lighting rig, saving the time and confusion of knowing which fixture is which in large, complex installations.
- Remotely change the DMX address through the settings window and through our visual patch, ensuring that DMX patching is done clearly, quickly and easily.
- Settings such as lamp hours and configuration, device hours, DMX personalities and more are all available through our device configuration window - all standard RDM parameters are fully supported, and custom ones are supported too!
- Configure W-DMX™ Transmitters and Receivers, and monitor their signal strength through the easy to use software
- View system topology and layout, eliminating the guesswork and mental gymnastics that normally accompanies lighting rig troubleshooting

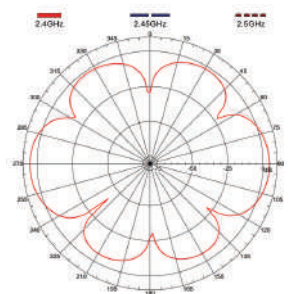


INDOOR ANTENNAS



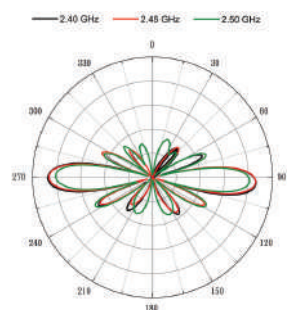
W-DMX™ INDOOR 2

Article number	A40501
Type	Omni
Frequency	2.4 GHz
Boost	2 dBi
Radiation (HxV)	360x360°
Connection	RP-SMA Male



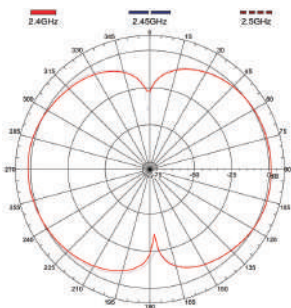
W-DMX™ INDOOR 5

Article no	A40502
Type	Omni
Frequency	2.4 GHz
Boost	5 dBi
Radiation (HxV)	360x30°
Connection	RP-SMA Male



W-DMX™ INDOOR 7

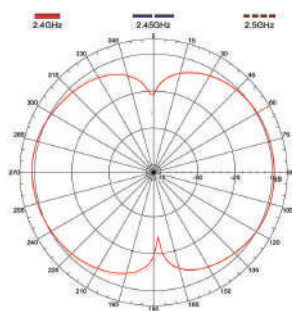
Article no	A40503
Type	Omni
Frequency	2.4 GHz
Boost	7 dBi
Radiation (HxV)	360x20°
Connection	RP-SMA Male



W-DMX™ INDOOR DUALBAND 2/4

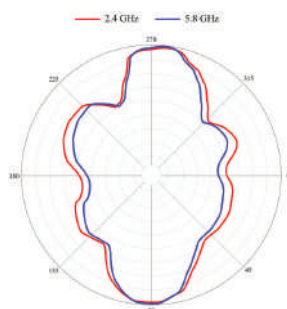
Article no	A40511
Type	Omni
Frequency	2.4 GHz / 5 GHz
Boost	2 dBi / 4 dBi
Radiation (HxV)	360x360° / 360x240°
Connection	RP-SMA Male

OUTDOOR ANTENNAS



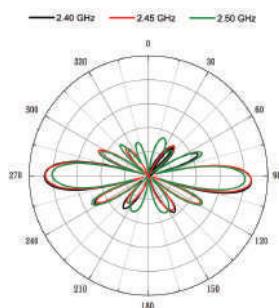
W-DMX™ OUTDOOR 3

Article number	A40518G4
Type	Omni
Frequency	2.4 GHz / 5 GHz
Boost	2 dBi
Radiation (HxV)	360x360°
Connection	N Female.
	Incl. Cable 75cm N Male-N Male



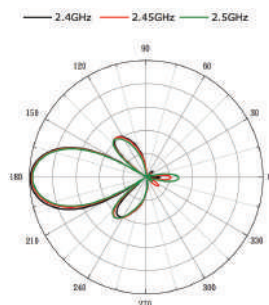
W-DMX™ OUTDOOR 6

Article number	A40505MK2
Type	Omni
Frequency	2.4 GHz / 5 GHz
Boost	6 dBi
Radiation (HxV)	360x30°
Connection	N Female.
	Incl. Cable 75cm N Male-N Male



W-DMX™ OUTDOOR 8

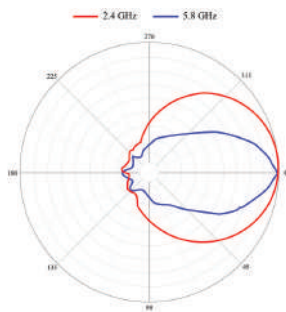
Article number	A40506
Type	Omni
Frequency	2.4 GHz
Boost	8 dBi
Radiation (HxV)	360x20°
Connection	N Female.
	Incl. Cable 75cm N Male-N Male



W-DMX™ OUTDOOR 12

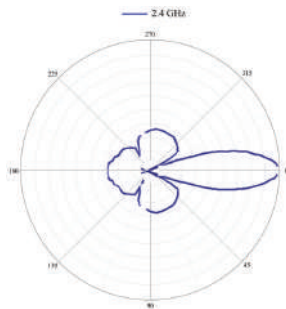
Article number	A40507
Type	Directional
Frequency	2.4 GHz
Boost	12 dBi
Radiation (HxV)	30x30°
Connection	N Female.
	Incl. Cable 75cm N Male-N Male
Bracket	Included

OUTDOOR ANTENNAS (CONTINUED)



W-DMX™ OUTDOOR DUALBAND 8/10

Article number	A40512G4
Type	Directional
Frequency	2.4 GHz / 5 GHz
Boost	8 dBi / 10 dBi
Radiation (HxV)	30x30° / 25x25°
Connection	N Female .
	Incl. Cable 75cm N Male-N Male



W-DMX™ OUTDOOR 21

Article number	A40508
Type	Directional
Frequency	2.4 GHz
Boost	21 dBi
Radiation (HxV)	7x7°
Connection	N Female.
	Incl. Cable 75cm N Male-N Male
Bracket	Included

ANTENNA ADAPTERS



N MALE-RP-SMA

Article number

A40621

Description

**Adapter for all Indoor Antenna.
N Male - RP-SMA Female**



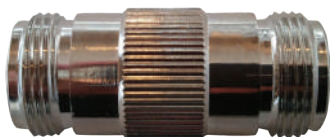
RP-SMA-N FEMALE

Article number

A40623

Description

For indoor cable to mount outdoor antenna.



N FEMALE-N FEMALE

Article number

A40627

Description

Used to put outdoor antenna directly on an outdoor box.



N MALE-N MALE

Article number

A40628

Description

Used to connect 2 outdoor cables together for extension.



W-DMX™ LIGHTNING ARRESTOR

Article number

A40622

Description

**N Male - N Female.
Requires Earth Ground.
Recommend for outdoor installation.**



ANTENNA COMBINER

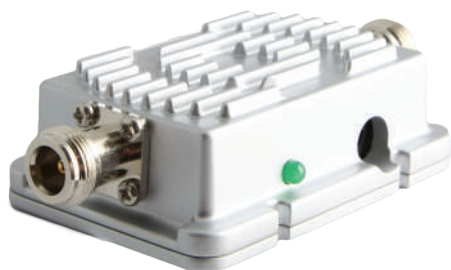
Article number

A40210

Description

**Antenna Combiner / Splitter. 2
Antenna for 1 Transmitter, Vice Versa
Receiver.**

ACCESSORIES



AC/DC ADAPTER

Article number	A40150G5
Description	90-250VAC to 12VDC Electronic Transformer.

POWERCORD

Article number	A40152
Description	Powercon with Schuko 1.5m
Article no	A40153
Description	Powercon with Edison 5ft.

QUICK LOCK CLAMP

Article number	A40163
Description	Quick Lock for BlackBox MK2 G4S

DIN RAIL ADAPTER

Article number	A40166
Description	Din rail adapter for BlackBox MK2

W-DMX™ CABLES

Loss/m	0,3 dBi (2.4 GHz) and 1,0 (5 GHz)		
Connector	N Male to N Male		
Article number	1.5m	A40607	3.0m A40608
	5.0m	A40609	10.0m A40610
	15.0m	A40611	20.0m A40612
	30.0m	A40613	

W-DMX™ BOOSTER SERIES

Additional items	50 cm cable included
Output power	1000 mW
IP-rating	IP65

BLACKBOX B-5000 OUTDOOR

Article no	A40203G4
Frequency	5.8 GHz

BLACKBOX B-1000 OUTDOOR

Article no	A40204
Frequency	2.4 GHz

DONGLE MK2

The W-DMX™ dongle is our ideal tool for configuring W-DMX™ units, when the full power of the W-DMX™ BlueBox RDM is not required. Channels in use can be manually configured (bypassing the AFHSS technology), and output power can be reconfigured quickly and easily.

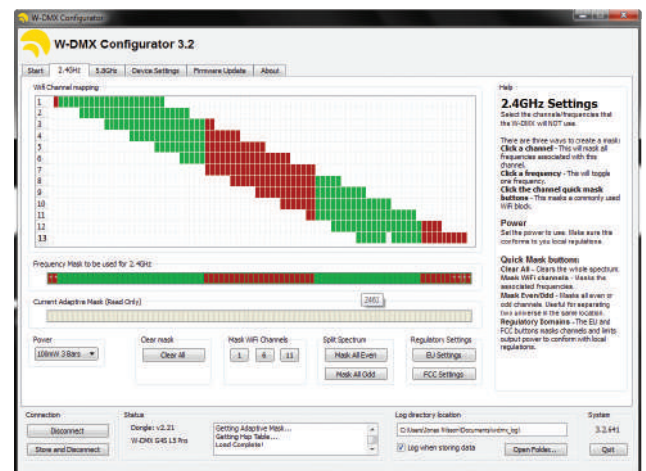
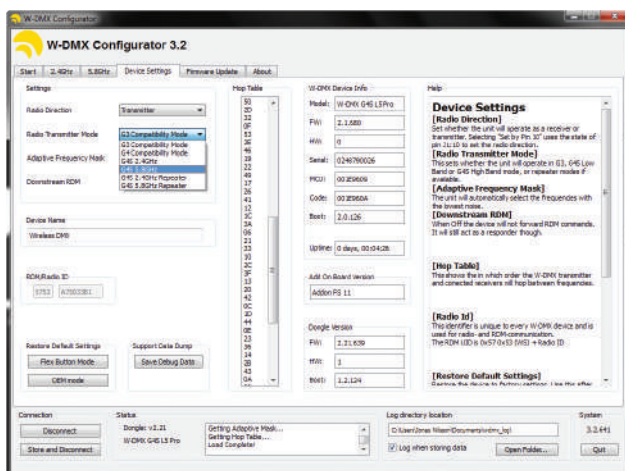
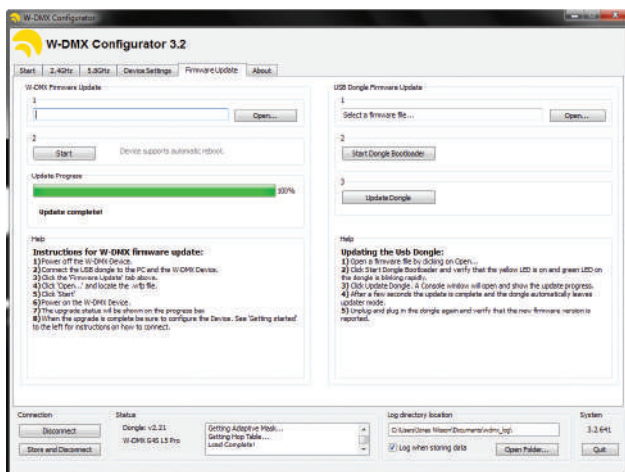
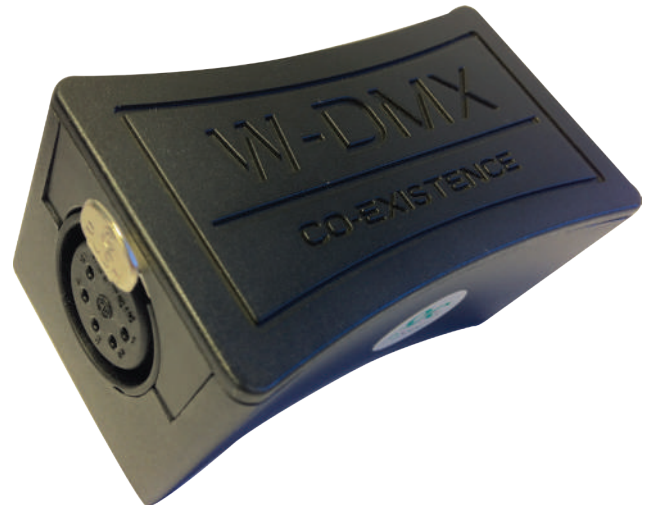
With the basic mode, W-DMX™ channels can be disabled by selecting which Wi-Fi channels are in use, and in the advanced mode, power users can disable individual W-DMX™ channels for finer control of the radio spectrum.

The W-DMX Dongle also is used to update firmware on all W-DMX. We recommend you to have the dongle in the toolbox to make sure you always have the latest software from Wireless Solution.

DONGLE

Article number
Product type

A40303MK2
Configuration tool



A SELECTION OF OEM PRODUCTS

CAMEO ZENIT B60

This battery-powered RGBW unit includes 4x 15W cree LEDs and a lithium-ion battery from LG Chem, guaranteeing up to 24 hours in full-colour mode.

There are two versions, one in matt black and a chromed version, both featuring W-DMX™ wireless control.



EHRGEIZ BABY ZOOM 1

The Baby Zoom 1 is an outdoor fixture with 1x 60W OSRAM LEDs, with a beam angle of 6° - 45°, allowing a uniform colour reproduction through its optics.

It has also got an IP67 classification and it's fully equipped with a W-DMX™ receiver, enabling wireless control.



INFINITY CHIMP 300

The Chimp 300 is the world's first lighting desk capable to transmit DMX wirelessly with W-DMX™.

It's able to control moving-lights and complex sequences, outputting up to 4 universes, and includes an in-built 22" touch screen, 10 faders with multiple pages, 4 encoders, and completely built for touring applications and live-event programming.



CHAUVET MAVERICK MK3 WASH

Maverick MK3 Wash raises the bar on output, color consistency, and pixel effects.

Powered by 27 (40 W) Osram RGBW LEDs, it has the muscle to handle any application, including long throw situations, with ease. It features pixel mapping effects and control with W-DMX™.



PROLIGHTS PANORAMA IP AIRBEAM

This IP65 moving beam luminaire delivers an unbelievably bright, fat 2° beam ideal for outdoor searchlight and big air looks.

It can truly make an event stand out and is capable to fill a large outdoor space with spectacular beams – it's also battery-powered and has got W-DMX™ control.



CLF LIGHTING ARES XS

The Ares XS is the smaller brother of the Ares, with an array of 18 calibrated high power RGBW LEDs is divided in three individually controllable horizontal segments.

The Ares XS is equipped with a punchy 21° beam angle and a Wireless Solution W-DMX™ receiver on board.





“

Everything worked perfectly
and without interference or
signal loss.

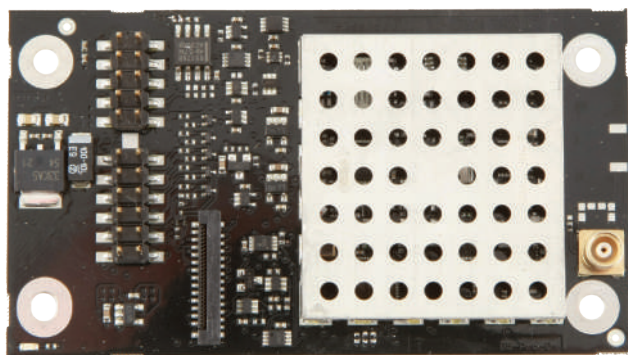
**Francisco Yañez Valdivia,
VALOOK**

W-DMX™ OEM G5

The W-DMX™ OEM program comprises over 50 OEM manufacturers that make their products compatible with the W-DMX™ wireless protocol, ensuring that even with a range of brands and different types of products, a piece of lighting equipment with Wireless functionality will work with another piece of equipment with Wireless functionality.

To OEM customers, not only are we offering a complete solution for integrating wireless control into your fixtures, but we also keep on stock of a complete range of antennas as well a complete range of OEM Antenna cables that are suitable for your application. As the leading manufacturer of wireless lighting control solutions, we offer a complete range of products coupled with technical assistance in your R&D department to make installation of Wireless control as easy as possible.

Wireless Solution produces over 50 000 units per year. With over 200,000 units shipped worldwide since inception, installed in fixtures, dimmers, consoles, signal distribution units and more, Wireless Solution's W-DMX™ is the 'unofficial' standard for wireless lighting control worldwide.



OEM G5 SERIES

Universes	1
Approvals	CE, c/ETL, FCC, ETSI, ARIB. Approval for China pending.

PICO SERIES

Article number	See combinations
Operational modes	Receiver
Frequency	2.45 GHz
Antenna	MCX
Protocols	DMX
DC input	5-18V
Combinations	MCX (A40901G5) Internal antenna (A40900G5)

MICRO SERIES

Article number	See combinations
Operational modes	Transmitter/Receiver
Frequency	2.45 GHz
Protocols	DMX / RDM ¹
DC input	5-26V
Combinations	MCX (A40902G5) Internal antenna, SPI (A40903G5-SPI)

PRO TRIPLE-BAND

Article number	See combinations
Frequency	2.45 GHz / 5.2 GHz / 5.8 GHz
Antenna	MCX
Protocols	DMX / RDM ¹
DC Input	5V
Combinations	Transmitter/Receiver (A40904G5-SPI) Receiver (A40905G5-SPI)

W-DMX™ NANO G5 AND W-DMX™ COB G5

W-DMX™ NANO G5

is the best-selling PCB for OEM solutions in the W-DMX™ range, packing both DMX and RDM into a form factor guaranteed to fit into the smallest spaces. The PCB is available in two types – a DMX receiver, and a DMX/ RDM transceiver.



The transceiver supports our innovative Flex mode, meaning the card can be quickly and easily changed between transmitter and receiver.

With the compact form factor, yet still filled with all the innovative features from the W-DMX™ G4S range, the new W-DMX™ NANO OEM card allows products that were once impossible to be created - a truly innovative product.

W-DMX™ TINY G5

Is the newest and the smallest PCB available, with the best features that W-DMX™ G5 packs. It was made to be fitted into the smallest spaces but with the possibility to easily maintain and replace.



W-DMX COB G5 (CHIP ON BOARD)

Transceiver solution in an ultra compact 6x6mm size for OEM applications. Wireless Solution is the first to launch the SMT mounted Chip On Board radio transceiver that supports both DMX and RDM in a QFN48 package.



The W-DMX COB is a low energy solution with only 40mA current consumption, and facilitates distances up to 200 meters (In receiving mode) with a 3dBi standard antenna and BlackBox F-1. A low cost solution that makes possible for every fixture to have original W-DMX inside.

OEM NANO AND COB SERIES

Universes	1
Approvals	CE, c/ETL, FCC, ETSI, ARIB. Approval for China pending.

NANO TRX SERIES

Article number	See combinations
Operational modes	Transmitter/Receiver
Frequency	2.4 GHz
Protocols	DMX / RDM ¹
Combinations	3.3/5V, MCX (A40890G5) 3.3/5V, Internal antenna (A40891G5-SPI) 3.3V/5-26V, MCX (A40890G5-SPI)

NANO RX SERIES

Article number	See combinations
Operational modes	Receiver
Frequency	2.4 GHz
Protocols	DMX / RDM ¹
DC input	3.3V/5-18V
Combinations	MCX (A40895G5) Internal antenna (A40896G5-SPI)

TINY TRX SERIES

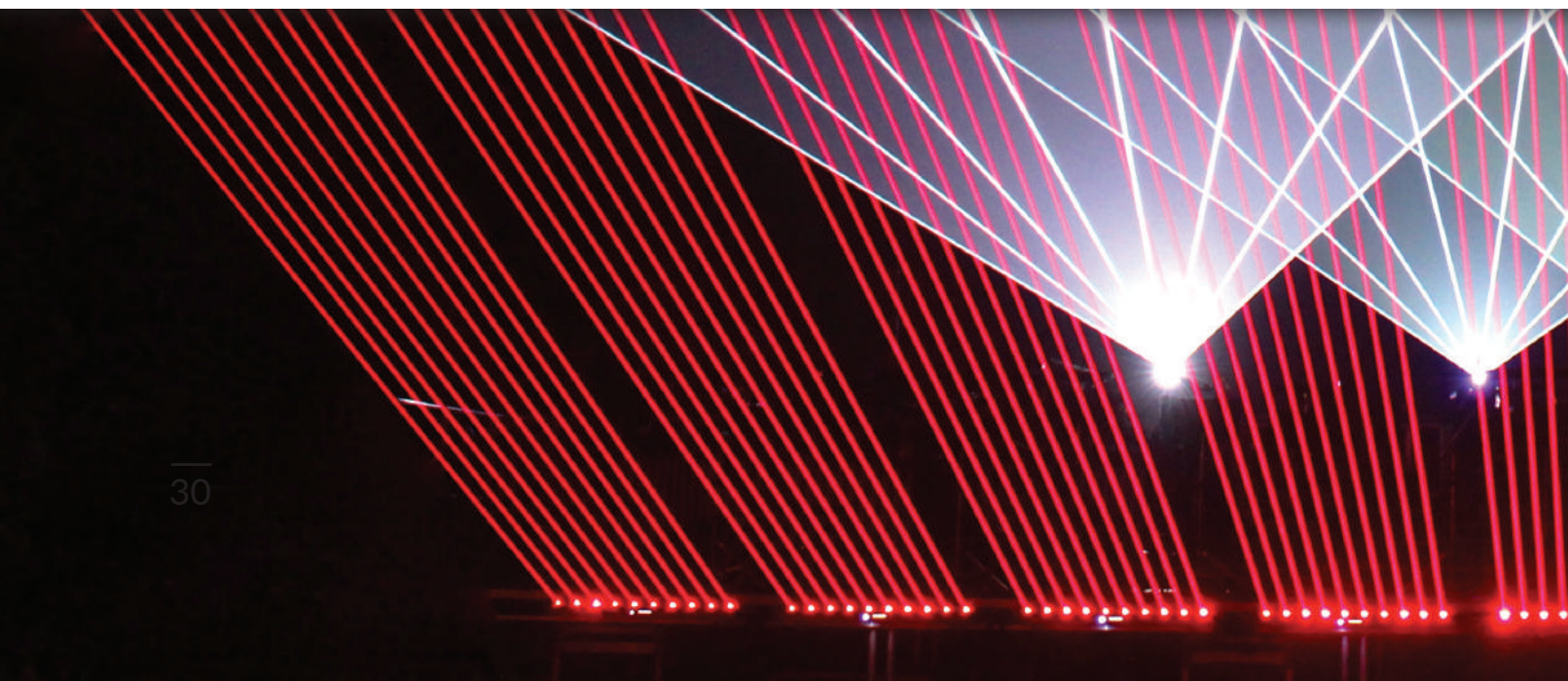
Article number	See combinations
Operation modes	Transmitter/Receiver
Frequency	2.4 GHz
Protocols	DMX / RDM
DC Input	3.3V
Combinations	RP-SMA (A40894G5) / IPEX (A40893G5)

TINY RX SERIES

Article number	See combinations
Operation modes	Receiver
Frequency	2.4 GHz
Protocols	DMX
DC Input	3.3V
Combinations	RP-SMA (A40899G5) / IPEX (A40898G5)

W-DMX™ COB

Article number	A40880G5-O
Operational modes	Transceiver
Frequency	2.45 GHz
Internal antenna	No
Protocols	DMX / RDM ¹
DC Input	3.3V
Dimensions	6x6 mm



The unofficial standard
**Our current list
of OEM partners**



PAST, PRESENT AND THE FUTURE

Since its founding in 2003, Wireless Solution has taken a unique approach to not only make the best product available, but to educating customers and really getting to know what they expect. Whether you join us at an intimate Open House for hands-on demonstrations, a Swedish vodka and meatball party at PLASA or LDI, or a brush-up on the technology of wireless DMX at one of our seminars, there is always a new and educational and/or fun way to get to know our team.

We have no intention of slowing down! While our R&D department continues to deliver the very best

in W-DMX™ products and accessories, our sales and support team is planning a myriad of special events, training sessions and different networking opportunities.

You don't have an excuse to not find us! We do tradeshow from Beijing to Las Vegas and everywhere in between. Check our website at www.wirelessdmx.com or search facebook for "wireless dmX" and join our group. There you find all listings of events where you can get to know us and our superior quality products close up.





“

Well Done
W-DMX!

HENRY ANG SHOWTEC GROUP

We used the W-DMX system for the grand opening of the Marina Bay Sands. It is a user-friendly system to set up and operate and the performance of the system at great distances gave us the confidence to use it on projects like the Wishing Spheres that were beyond our imagination in the past. Well Done W-DMX!

PROS AND CONS OF 2.4GHZ AND 5GHZ

All W-DMX™ G5 BlackBox, WhiteBox and ProBox series ship with triple-band 2.4 GHz, 5.2 GHz and 5.8 GHz as standard. Having all frequency bands out of the box (and all supporting our patented Adaptive Frequency Hopping technology) is a great option for any lighting installation or project, as you can take immediate advantage of the pro's and con's of each band at the push of a button.

2.4 GHZ

Pros

- The longest range frequency band of the two
- the largest range of antennas available
- Penetrates through walls and other obstacles better than the 5.2/5.8GHz band
- Low loss in Wireless Solution cable of less than 0.3dB per meter allows for long antenna cable runs

Cons

- High levels of traffic from Wireless LANs, which can create spectrum to be crowded.
- Mobile phone jamming systems (for Anti-Terrorist) cause interference on the 2.4GHz band as mobile
- Wireless Steadicam can cause issue in close distance.

5.2/5.8 GHZ

Pros

- Very little traffic on the 5.2/5.8GHz band ensures that the wireless DMX signal, and other radio signals on the frequency band don't suffer from congestion and interference.
- Frequency band is far away from bands that are commonly jammed, meaning that, especially on high profile events, the 5.2/5.8GHz band prevents interference. Also avoiding Wireless Steady Cam

Cons

- Range is less than that of the 2.4GHz band.
- Higher loss in Wireless Solution cables (1dB per meter) in this frequency band means it is not recommended to have long antenna cables.
- 5.2/5.8GHz is not available in all countries.

In short, the performance of the 2.4GHz band makes it reliable for most events today, however when additional security and protection against interference is required, the 5.2/5.8GHz band is the ideal choice. 5.2/5.8Ghz is also the best choice when operating inside TV Studios or Live Recording environments, especially when there is the presence of many steadycams. Wherever there is the presence of high volumes of wireless traffic, the 5.2/5.8GHz band can really shine.



“

The furthest receiver
was at 1km from the
transmitter.

**Samuel Siegel,
MBLightarts**



www.wirelessdmx.com

sales@wirelessdmx.com

2017 All Right Reserved